



Solution: SR2N02010NAA1

1. Change Log.....	3
2. Site Planning Datasheet.....	4
3. Interconnection Guide (ICG).....	5
4. Field Supplied Cable & Part List	18
5. Vertiv MSR2 600mm IT Rack	19
6. Vertiv MSR2 Power Management Cabinet (PMC)	20
7. Vertiv Liebert CRD10 with Plenums.....	21
8. Power Management Unit - 10kW (PMU10).....	22
9. PMU10 Terminal Blocks Size.....	23
10. Vertiv MSR2 - CT600 Cable Tray 600mm	24
11. Scope of Work	25

1. Change Log

Rev	Date	Author	Description	Number of Change
A	1/29/2024	MG	Initial Release	CO-1083702
B	4/4/2024	TK	Updated site planning datasheet, minor changes to interconnection guide, removal of SOW checklist	CO-1087618
C	6/10/2024	TK	Updated connection guide, added updated SOW checklist, updated design	CO-1091967

2. Site Planning Datasheet

Smart Row 2 Site Planning Datasheet (208V, 3 phase, 4 wire + PE)

Configuration Number	Part Number	Max Row Capacity (kW)	IT Racks per Row	Capacity per Rack (kW)	Cooling Units per Row	pdu count	Main Input Breaker Size ⁶	Per Condenser Breaker Size	Per Condenser Dry Weight kg (lbs)	Row Dimensions (L x H x D) mm (in) ⁷	Row Weight kg (lbs)	Min. Staging Area m ² (ft ²)
1	SR2N02010NAA1	10	2	5	1	2	100A	N/A ⁵	60 (132.3)	2100 (82.7) x 2271 (107) x 1400 (55.2)	1463 (3227)	14.41 (155.2)
2	SR2N02010PAA1	10	2	5	1	4	100A	N/A ⁵	60 (132.3)	2100 (82.7) x 2271 (107) x 1400 (55.2)	1491 (3288)	14.99 (161.4)
3	SR2N02010FAA1	10	2	5	2	4	100A	N/A ⁵	60 (132.3)	2400 (94.5) x 2271 (107) x 1400 (55.2)	2112 (4656)	17.67 (190.2)
4	SR2N03010NAA1	10	3	3	1	3	100A	N/A ⁵	60 (132.3)	2700 (106.3) x 2271 (107) x 1400 (55.2)	1633 (3601)	15.76 (169.7)
5	SR2N03010PAA1	10	3	3	1	6	100A	N/A ⁵	60 (132.3)	2700 (106.3) x 2271 (107) x 1400 (55.2)	1675 (3694)	16.34 (175.9)
6	SR2N03010FAA1	10	3	3	2	6	100A	N/A ⁵	60 (132.3)	3000 (118.2) x 2271 (107) x 1400 (55.2)	2296 (5061)	19.02 (204.8)
7	SR2N03020NAA1	20	3	6	1	3	175A	15A	118 (260.2)	2700 (106.3) x 2271 (107) x 1400 (55.2)	1863 (4108)	18.46 (198.8)
8	SR2N03020PAA1	20	3	6	1	6	175A	15A	118 (260.2)	2700 (106.3) x 2271 (107) x 1400 (55.2)	1905 (4201)	20.51 (220.8)
9	SR2N03020FAA1	20	3	6	2	6	175A	15A	118 (260.2)	3000 (118.2) x 2271 (107) x 1400 (55.2)	2526 (5568)	24.42 (262.9)
10	SR2N04020NAA1	20	4	5	1	4	175A	15A	118 (260.2)	3300 (130) x 2271 (107) x 1400 (55.2)	2033 (4483)	19.81 (213.3)
11	SR2N04020PAA1	20	4	5	1	8	175A	15A	118 (260.2)	3300 (130) x 2271 (107) x 1400 (55.2)	2089 (4607)	21.86 (235.3)
12	SR2N04020FAA1	20	4	5	2	8	175A	15A	118 (260.2)	3600 (141.8) x 2271 (107) x 1400 (55.2)	2710 (5974)	25.77 (277.4)
13	SR2N05020NAA1	20	5	4	1	5	175A	15A	118 (260.2)	3900 (153.6) x 2271 (107) x 1400 (55.2)	2203 (4858)	21.16 (227.8)
14	SR2N05020PAA1	20	5	4	1	10	175A	15A	118 (260.2)	3900 (153.6) x 2271 (107) x 1400 (55.2)	2273 (5012)	23.21 (249.9)
15	SR2N05020FAA1	20	5	4	2	10	175A	15A	118 (260.2)	4200 (165.4) x 2271 (107) x 1400 (55.2)	2894 (6380)	27.12 (292)

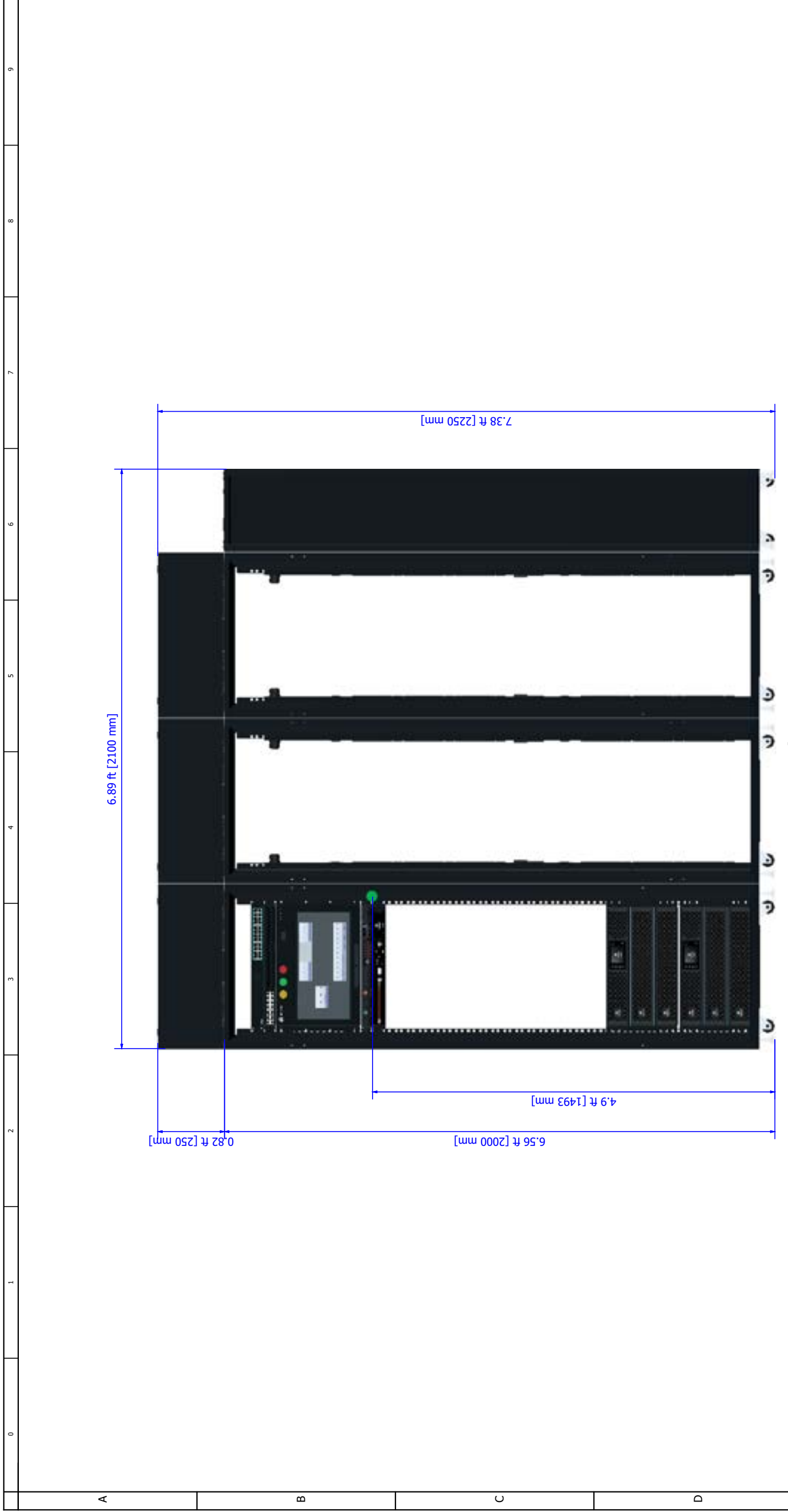
Notes:

- System Environmental Conditions: Indoors, 41 °F to 104 °F (5 °C to 40 °C), RH to 80% with Max dew point of 82.4 °F (28 °C)
- Floor surface must be level and continuous (expansion joints sealed, raised floor tile gaps sealed, no floor drains, etc).
- No building sprinkler head should be within 19.7 in (0.5 m).
- Install in accordance with national and local electrical codes
- 10kW condenser power is sourced from the indoor unit
- Cable Sizing: 100A = 3 AWG ; 175A = 2/0 AWG
- Row Dimensions do not include necessary space needed for access including per ADA or local codes.

SHEET NO.	DRAWN BY:	© 2023, VERTIV GROUP CORPORATION. CONFIDENTIAL AND PROPRIETARY. ALL RIGHTS RESERVED. VERTIV AND THE VERTIV LOGO ARE TRADEMARKS OR REGISTERED TRADEMARKS OF VERTIV GROUP CORPORATION. THIS DOCUMENT AND THE INFORMATION IT CONTAINS ARE THE PROPERTY OF VERTIV GROUP CORPORATION. BY ACCEPTING IT INTO YOUR POSSESSION, YOU AGREE THAT YOU WILL KEEP THIS DOCUMENT AND ALL INFORMATION CONTAINED HEREIN IN STRICTEST CONFIDENCE AND WILL NOT COPY, REPRODUCE, RETRANSMIT, USE (EXCEPT SOLELY FOR THE BENEFIT OF VERTIV GROUP CORPORATION), SELL, LEND, OR OTHERWISE DISPOSE OF SAME, DIRECTLY OR INDIRECTLY, WITHOUT THE EXPRESS WRITTEN PERMISSION OF VERTIV GROUP CORPORATION. AND THIS DOCUMENT SHALL BE RETURNED TO VERTIV GROUP CORPORATION IMMEDIATELY UPON REQUEST.		DWG. NO.	
CO. NO.	DESIGNED BY:	TITLE	DATE (LATEST REV)		
REF. DWG.	APPROVED BY:	Smart Row 2 Site Planning Datasheet (208V, 3 phase, 4 wire + PE)	REVISION	506 N. CLEVELAND AVE WESTERVILLE, OHIO 43081	

3. Interconnection Guide (ICG)

<p>0 1 2 3 4 5 6 7 8 9</p>			<p>Vertiv™ SmartRow™ 2: 2x IT Rack 10kW</p>	<p>Row IT Load Capacity: 10 kW Power Redundancy UPS: No Power Redundancy rPDU: No Cooling Redundancy: No Dimensions: Length: 6.89 ft [2100 mm] Depth: 4.6 ft [1400 mm] Height: 7.38 ft [2250 mm]</p>		<table border="1"> <tr> <td data-bbox="1764 379 1814 761">SHEET NO.</td> <td data-bbox="1764 761 1814 994">1 / 13</td> <td data-bbox="1764 994 1814 1103">DRAWN BY:</td> <td data-bbox="1764 1103 1814 1243">Nilesh Patil</td> <td data-bbox="1764 1243 1814 1383">DNG NO.</td> <td data-bbox="1764 1383 1814 1554">SR2N02010NAA1</td> <td data-bbox="1764 1554 1814 1693">REVISION:</td> <td data-bbox="1764 1693 1814 1864">505 N. CLEVELAND AVE WESTERVILLE OH 43081</td> <td data-bbox="1764 1864 1814 2915" rowspan="3"> </td> </tr> <tr> <td data-bbox="1814 379 1864 761">CHANGE NO.</td> <td data-bbox="1814 761 1864 994"></td> <td data-bbox="1814 994 1864 1103">APPROVED BY:</td> <td data-bbox="1814 1103 1864 1243">Jakub Fencl</td> <td data-bbox="1814 1383 1864 1554">DATE (LATEST REV.)</td> <td data-bbox="1814 1383 1864 1554"></td> <td data-bbox="1814 1693 1864 1864"></td> <td data-bbox="1814 1693 1864 1864"></td> </tr> <tr> <td data-bbox="1864 379 1921 761">PAGE DESCRIPTION:</td> <td data-bbox="1864 761 1921 994">1- Title page / cover sheet</td> <td colspan="2" data-bbox="1864 994 1921 1243">TITLE / DESCRIPTION:</td> <td colspan="4" data-bbox="1864 1243 1921 1864">Vertiv™ SmartRow™ 2: 2x IT Rack 10kW</td> </tr> </table> <p><small>© 2020 VERTIV GROUP CORPORATION. CONFIDENTIAL AND PROPRIETARY. ALL RIGHTS RESERVED. VERTIV AND THE VERTIV LOGO ARE TRADEMARKS OR REGISTERED TRADEMARKS OF VERTIV GROUP CORPORATION. THIS DOCUMENT (AND THE INFORMATION IT CONTAINS) ARE THE PROPERTY OF VERTIV GROUP CORPORATION BY ACCEPTING IT INTO YOUR POSSESSION, YOU AGREE THAT YOU WILL KEEP THIS DOCUMENT AND ALL INFORMATION CONTAINED HEREIN IN STRICTEST CONFIDENCE AND WILL NOT COPY, REPRODUCE, USE (EXCEPT SOLELY FOR THE BENEFIT OF VERTIV GROUP CORPORATION), SELL, LEND, OR OTHERWISE DISPOSE OF SAME, DIRECTLY OR INDIRECTLY, WITHOUT THE EXPRESS WRITTEN PERMISSION OF VERTIV GROUP CORPORATION, AND THIS DOCUMENT SHALL BE RETURNED TO VERTIV GROUP CORPORATION IMMEDIATELY UPON REQUEST.</small></p>	SHEET NO.	1 / 13	DRAWN BY:	Nilesh Patil	DNG NO.	SR2N02010NAA1	REVISION:	505 N. CLEVELAND AVE WESTERVILLE OH 43081		CHANGE NO.		APPROVED BY:	Jakub Fencl	DATE (LATEST REV.)				PAGE DESCRIPTION:	1- Title page / cover sheet	TITLE / DESCRIPTION:		Vertiv™ SmartRow™ 2: 2x IT Rack 10kW			
SHEET NO.	1 / 13	DRAWN BY:	Nilesh Patil	DNG NO.	SR2N02010NAA1	REVISION:	505 N. CLEVELAND AVE WESTERVILLE OH 43081																								
CHANGE NO.		APPROVED BY:	Jakub Fencl	DATE (LATEST REV.)																											
PAGE DESCRIPTION:	1- Title page / cover sheet	TITLE / DESCRIPTION:		Vertiv™ SmartRow™ 2: 2x IT Rack 10kW																											



Front View

Notes:

1. Row IT Load Capacity is driven by number of IT-Racks (IT-Rack x 3.33 kW per rack).
2. System Environmental Conditions: Indoors, 41 F to 104 F (5 C to 40 C), RH to 80% with Max dew point of 82.4 F (28 C).
3. Floor surface must be level and continuous (expansion joints sealed, raised floor tile gaps sealed, no floor drains, etc).
4. No building sprinkler head should be within 19.7 in (0.5 m).


● **Temperature Sensor**

SHEET NO. 2 / 13	DRAWN BY: Nilesh Patil	DWG NO. SR2N02010NAA1	DATE (LATEST REV.)	REVISION: 505 N. CLEVELAND AVE WESTERVILLE OH 43081
	APPROVED BY: Jakub Fencel			
CHANGE NO.	TITLE / DESCRIPTION: Vertiv™ SmartRow™ 2: 2x IT Rack 10kW			
PAGE DESCRIPTION: 2- vRow Front View	<small>© 2020 VERTIV GROUP CORPORATION. CONFIDENTIAL AND PROPRIETARY. ALL RIGHTS RESERVED. VERTIV AND THE VERTIV LOGO ARE TRADEMARKS OR REGISTERED TRADEMARKS OF VERTIV GROUP CORPORATION. THIS DOCUMENT (AND THE INFORMATION IT CONTAINS) ARE THE PROPERTY OF VERTIV GROUP CORPORATION BY ACCEPTING IT INTO YOUR POSSESSION, YOU AGREE THAT YOU WILL KEEP THIS DOCUMENT AND ALL INFORMATION CONTAINED HEREIN IN STRICTEST CONFIDENCE AND WILL NOT COPY, REPRODUCE, TRANSMIT, USE (EXCEPT SOLELY FOR THE BENEFIT OF VERTIV GROUP CORPORATION), SELL, LEND, OR OTHERWISE DISPOSE OF SAME, DIRECTLY OR INDIRECTLY, WITHOUT THE EXPRESS WRITTEN PERMISSION OF VERTIV GROUP CORPORATION, AND THIS DOCUMENT SHALL BE RETURNED TO VERTIV GROUP CORPORATION IMMEDIATELY UPON REQUEST.</small>			

A	B	C	D	E	6	7	8	9																																					
<h2 style="margin: 0;">Top View</h2> <p style="margin: 0;">Note[1] points to the top panel area.</p> <p style="margin: 0;">Note[2] points to the cable trough area.</p>																																													
<h3 style="margin: 0;">PMC Connection Details</h3>																																													
<h3 style="margin: 0;">CRD Connection Details</h3>																																													
<p style="margin: 0;">Note :- 1. Cable trough not shown to make top panel details visible.</p> <p style="margin: 0;">2. Do not use the marked hole for bottom cable routing.</p>																																													
<h4 style="margin: 0;">Unit Top Connections</h4> <table border="1" style="width: 100%; border-collapse: collapse;"> <tr> <td>RLT</td> <td>Refrigerant Liquid Line Inlet</td> <td>1/2" O.D Copper Sweat</td> </tr> <tr> <td>RGT</td> <td>Refrigerant Gas Line Outlet</td> <td>5/8" O.D Copper Sweat</td> </tr> <tr> <td>CPT</td> <td>Condensate Pump</td> <td>1/2" NPTF FEMALE</td> </tr> <tr> <td>HVT</td> <td>High Voltage Bottom Connection</td> <td>Combination knockout 1-1/8" (29mm)</td> </tr> <tr> <td>LVT</td> <td>Low Voltage Bottom Connection</td> <td>Knockout Hole Diameter 7/8" (22 mm)</td> </tr> <tr> <td>GPT</td> <td>Grounding Point</td> <td>Thread Hole M8</td> </tr> </table>					RLT	Refrigerant Liquid Line Inlet	1/2" O.D Copper Sweat	RGT	Refrigerant Gas Line Outlet	5/8" O.D Copper Sweat	CPT	Condensate Pump	1/2" NPTF FEMALE	HVT	High Voltage Bottom Connection	Combination knockout 1-1/8" (29mm)	LVT	Low Voltage Bottom Connection	Knockout Hole Diameter 7/8" (22 mm)	GPT	Grounding Point	Thread Hole M8	<h4 style="margin: 0;">Unit Bottom Connections</h4> <table border="1" style="width: 100%; border-collapse: collapse;"> <tr> <td>RLT</td> <td>Refrigerant Liquid Line Inlet</td> <td>1/2" O.D Copper</td> </tr> <tr> <td>RGT</td> <td>Refrigerant Gas Line Outlet</td> <td>5/8" O.D Copper</td> </tr> <tr> <td>CPT</td> <td>Condensate Pump</td> <td>1/2" NPTF FEMALE</td> </tr> <tr> <td>HVT</td> <td>High Voltage Bottom Connection</td> <td>Combination knockout 1-1/8" (29mm)</td> </tr> <tr> <td>LVT</td> <td>Low Voltage Bottom Connection</td> <td>Knockout Hole Diameter 7/8" (22 mm)</td> </tr> <tr> <td>CGT</td> <td>Condensate Gravity</td> <td>1/2" NPTF FEMALE</td> </tr> </table>					RLT	Refrigerant Liquid Line Inlet	1/2" O.D Copper	RGT	Refrigerant Gas Line Outlet	5/8" O.D Copper	CPT	Condensate Pump	1/2" NPTF FEMALE	HVT	High Voltage Bottom Connection	Combination knockout 1-1/8" (29mm)	LVT	Low Voltage Bottom Connection	Knockout Hole Diameter 7/8" (22 mm)	CGT	Condensate Gravity	1/2" NPTF FEMALE
RLT	Refrigerant Liquid Line Inlet	1/2" O.D Copper Sweat																																											
RGT	Refrigerant Gas Line Outlet	5/8" O.D Copper Sweat																																											
CPT	Condensate Pump	1/2" NPTF FEMALE																																											
HVT	High Voltage Bottom Connection	Combination knockout 1-1/8" (29mm)																																											
LVT	Low Voltage Bottom Connection	Knockout Hole Diameter 7/8" (22 mm)																																											
GPT	Grounding Point	Thread Hole M8																																											
RLT	Refrigerant Liquid Line Inlet	1/2" O.D Copper																																											
RGT	Refrigerant Gas Line Outlet	5/8" O.D Copper																																											
CPT	Condensate Pump	1/2" NPTF FEMALE																																											
HVT	High Voltage Bottom Connection	Combination knockout 1-1/8" (29mm)																																											
LVT	Low Voltage Bottom Connection	Knockout Hole Diameter 7/8" (22 mm)																																											
CGT	Condensate Gravity	1/2" NPTF FEMALE																																											
<p style="margin: 0;">Note :- Pipe sizes are for connection purposes and not the required line size.</p> <p style="margin: 0;">Consult thermal manuals for line sizes.</p>																																													
<p style="margin: 0;">Front of Unit (Internal Piping and top of unit hidden for clarity)</p> <p style="margin: 0;">Dimensions in "mm[in]"</p>																																													
<p style="margin: 0;">Front of Unit (Internal Piping and top of unit hidden for clarity)</p> <p style="margin: 0;">Dimensions in "mm[in]"</p>																																													
<p style="margin: 0;">FRONT OF UNIT</p>																																													
<p style="margin: 0;">DWG NO. SR2N02010NAA1</p> <p style="margin: 0;">DATE (LATEST REV.)</p> <p style="margin: 0;">REVISION: 505 N. CLEVELAND AVE WESTERVILLE OH 43081</p>																																													
<p style="margin: 0;">DRAWN BY: Nilesht Patil</p> <p style="margin: 0;">APPROVED BY: Jakub Fend</p> <p style="margin: 0;">TITLE / DESCRIPTION: Vertiv™ SmartRow™ 2: 2x IT Rack 10kW</p>																																													
<p style="margin: 0;">SHEET NO. 3 / 13</p> <p style="margin: 0;">PAGE DESCRIPTION: 2. a-vRow Top View</p>																																													

Cable overview

Packaging No.	Cable Category	Cable No.	Tag1	Tag2	Length (inch/mm)	Description
0411A816	Water immersion to RDU501	W219	Water Leak1	RDU501_DI1	216.5/5500	Water immersion 1 to RDU501 communication cable
	Smart door lock cascade	W201	PMC-LOCK	RACK1-LOCK	33.5/850	PMC to RACK1 power cascade cable
	Smart door lock cascade	W204	PMC-LOCK	Rack1-LOCK	33.5/850	PMC to Rack1 F-Door communication cascade cable
	Smart door lock cascade	W204	PMC-LOCK	Rack1-LOCK	33.5/850	PMC to Rack1 R-Door communication cascade cable
	Smart door lock cascade	W201	RACK1-LOCK	RACK2-LOCK	33.5/850	RACK1 to RACK2 power cascade cable
	Smart door lock cascade	W205	RACK1-LOCK	RACK2-LOCK	33.5/850	RACK1 to RACK2 F-Door communication cascade cable
	Smart door lock cascade	W205	RACK1-LOCK	RACK2-LOCK	33.5/850	RACK1 to RACK2 R-Door communication cascade cable
	Smart door lock cascade	W202	RACK2-LOCK	CRD1-LOCK	13.8/350	RACK2 to CRD1 power cascade cable
	Smart door lock cascade	W206	RACK2-LOCK	CRD1-LOCK	13.8/350	RACK2 to CRD1 F-Door communication cascade cable
	Smart door lock cascade	W206	RACK2-LOCK	CRD1-LOCK	13.8/350	RACK2 to CRD1 R-Door communication cascade cable
	CRV's microswitch and Smart door lock cascade	W206/W207	I-LOCK	F-R/BK, R-R/BK	82.7/2100	Smart door lock cable from front door to rear door in CRD1
	Front door light cascade cable	W210	PMC_FLIGHT	RACK1_FLIGHT	29.5/750	PMC to RACK1 front door LED light cascade cable
	Front door microswitch cascade cable	W212	PMC_F-SW	RACK1_F-SW	29.5/750	PMC to RACK1 Cascade cables for front door microswitches
	Rear door microswitch cascade cable	W214	PMC_R-SW	RACK1_R-SW	29.5/750	PMC to RACK1 Cascade cables for rear door microswitches
	Rear door light cascade cable	W216	PMC_RLIGHT	RACK1_RLIGHT	29.5/750	PMC to RACK1 rear door LED light cascade cable
	Front door light cascade cable	W211	RACK1_FLIGHT	RACK2_FLIGHT	29.5/750	RACK1 to RACK2 front door LED light cascade cable
	Front door microswitch cascade cable	W213	RACK1_F-SW	RACK2_F-SW	29.5/750	RACK1 to RACK2 Cascade cables for front door microswitches
	Rear door microswitch cascade cable	W215	RACK1_R-SW	RACK2_R-SW	29.5/750	RACK1 to RACK2 Cascade cables for rear door microswitches
	Rear door light cascade cable	W217	RACK1_RLIGHT	RACK2_RLIGHT	29.5/750	RACK1 to RACK2 rear door LED light cascade cable
	CRV's microswitch and Smart door lock cascade	W401-L	RDU:Smoke1	W401-L_385	177.2/4500	Microswitch communication cable from PMC to CRD1
THD cascading	W207	PMC-THD-RJ2	RACK1-THD-RJ1	33.5/850	PMC to RACK1 Cascade Cable	
Emergency fan to FC	W208	FC Port2	RACK1-FAN	122/3100	Rack1 Emergency fan to FC controller cable	
THD cascading	W207	RACK1-THD-RJ1	RACK2-THD-RJ1	33.5/850	RACK1 to RACK2 Cascade Cable	
Emergency fan to FC	W208	FC Port3	RACK2-FAN	122/3100	Rack2 Emergency fan to FC controller cable	
Emergency fan to FC	W209	FC Port1	PMC-FAN	51.2/1300	PMC Emergency fan to FC controller cable	
Communication cable	W116	PDU1A	PDU2A	157.5/4000	PDU1A to PDU2A communication cable	
Communication cable	W114	FC	Switcher(From FC)	70.9/1800	FC to Switch communication cable	

SHEET NO. 4 / 13	DRAWN BY: Nitesh Patil	DWG NO. SR2N02010NAA1	
CHANGE NO.	APPROVED BY: Jakub Fencel	DATE (LATEST REV.)	REVISION: 505 N. CLEVELAND AVE WESTERVILLE OH 43081
PAGE DESCRIPTION: 3- Cable overview : =vRow+9CRV1-W219 - =vRow+8PMC-W114		VERTIV™ SmartRow™ 2: 2x IT Rack 10kW	
© 2020 VERTIV GROUP CORPORATION CONFIDENTIAL AND PROPRIETARY. ALL RIGHTS RESERVED. VERTIV AND THE VERTIV LOGO ARE TRADEMARKS OR REGISTERED TRADEMARKS OF VERTIV GROUP CORPORATION. THIS DOCUMENT (AND THE INFORMATION IT CONTAINS) ARE THE PROPERTY OF VERTIV GROUP CORPORATION BY ACCEPTING IT INTO YOUR POSSESSION, YOU AGREE THAT YOU WILL KEEP THIS DOCUMENT AND ALL INFORMATION CONTAINED HEREIN IN STRICTEST CONFIDENCE AND WILL NOT COPY, REPRODUCE, TRANSMIT, USE (EXCEPT SOLELY FOR THE BENEFIT OF VERTIV GROUP CORPORATION), SELL, LEND, OR OTHERWISE DISPOSE OF SAME, DIRECTLY OR INDIRECTLY, WITHOUT THE EXPRESS WRITTEN PERMISSION OF VERTIV GROUP CORPORATION, AND THIS DOCUMENT SHALL BE RETURNED TO VERTIV GROUP CORPORATION IMMEDIATELY UPON REQUEST.			

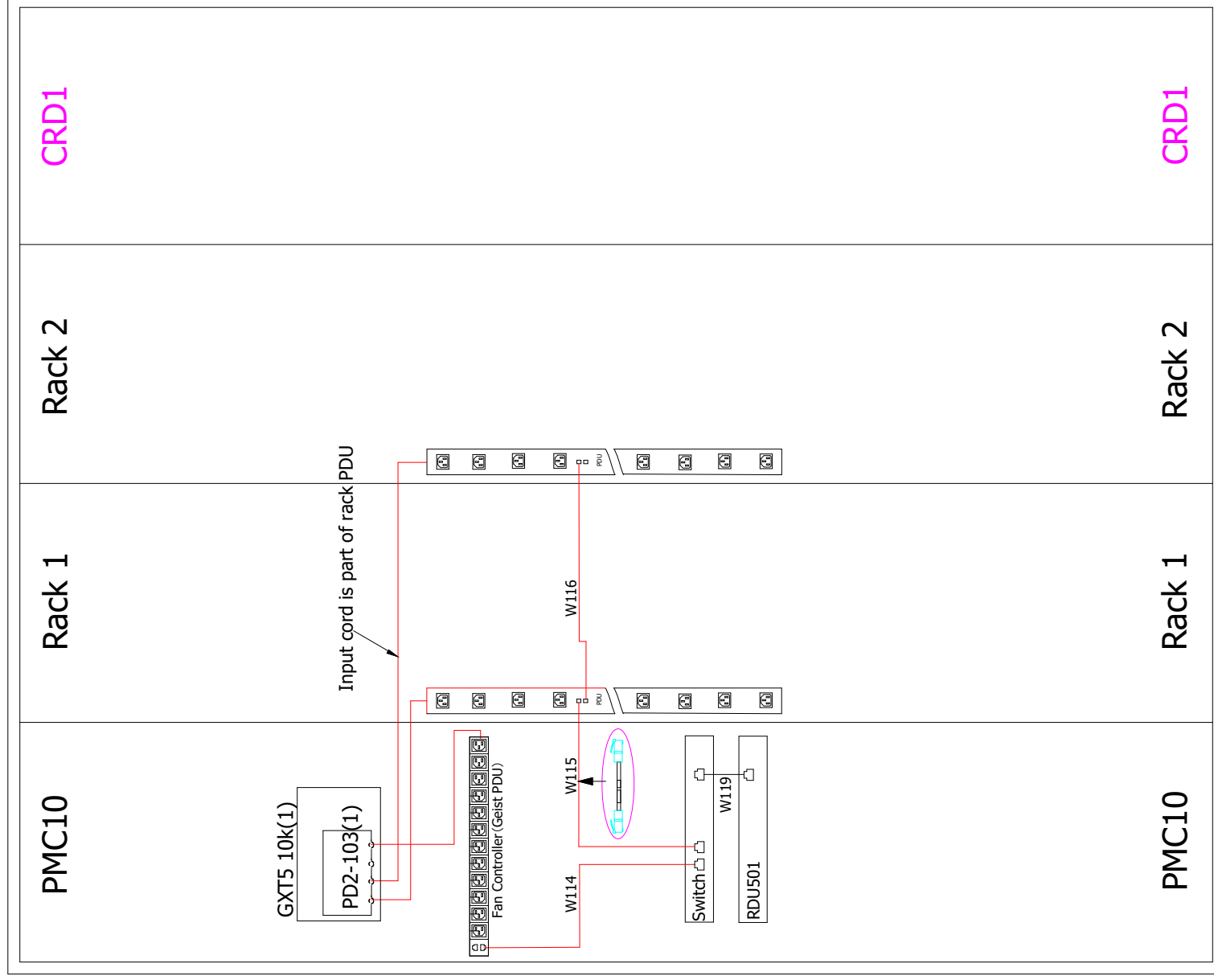


Cable overview

Packaging No.	Cable Category	Cable No.	Tag1	Tag2	Length (inch/mm)	Description
0411A859	Communication cable	W115	PDU	Switcher(From PDU)	70.9/1800	PDU to Switch communication cable
	Communication cable	W119	RDU501	Switcher(From RDU501)	47.2/1200	RDU501 to Switch Communication Cable
	Power cable	W04	PMU	CRD1 L1 L2 N G	165.4/4200	PMU to CRD1 power cable
	Power cable	W05	PMU TO CRD1	-	70.9/1800	PMU to CRD1 output cable
	Communication cable	W111	CRD1	Switcher(From CRD1)	196.9/5000	CRD1 to Switch communication cable
	Power cable	W01	PMU-UPS1 INPUT L1 L2 N G	UPS1-INPUT L1 L2 N G	94.5/2400	PMU to UPS1 input cable
	Power cable	W03	UPS OUTPUT	PMU UPS1-Output	94.5/2400	UPS1 to PMU output cable
	Communication cable	W112	UPS1	Switcher(From UPS1)	157.5/4000	UPS 1 to Switch communication cable
	Communication cable	W113	UPS2	Switcher(From UPS2)	145.7/3700	UPS 2 to Switch communication cable
	Communication cable	W118	NVR	Switcher(From NVR)	47.2/1200	NVR to Switch Communication Cable
	Power cable (factory assembled)	W06	PMU-LOCK DC+ DC-	PMC-LOCK	47.2/1200	PMU to PMC intelligent door lock power cable
	Communication cable (factory assembled)	W101	PMC-FLOCK	8COM-COM1	35.4/900	PMC to RDU501_ COM1 intelligent door lock front door communication cable
	Communication cable (factory assembled)	W107	PMU-RLOCK	8COM-COM2	70.9/1800	PMC to RDU501_ COM2 intelligent door lock rear door communication cable
	Power cable (factory assembled)	W07	PMU-RLIGHT	PMC-RLIGHT	39.4/1000	PMU to PMC rear door LED light power cable
	Power cable (factory assembled)	W09	PMU-FLIGHT FWH FRE FBK FBL	PMC-FLIGHT	68.9/1750	PMU to PMC front door LED light power cable
	Power cable (factory assembled)	W11	PMU-F-SW FCOM FNC	PMC-F-SW	68.9/1750	PMU to PMC front door microswitch power cable
	Power cable (factory assembled)	W12	PMU-R-SW	PMC-R-SW	39.4/1000	PMU to PMC rear door microswitch power cable
Communication cable (factory assembled)	W102	PMU-DO2	RDU501-DO2	70.9/1800	PMU to RDU501 D02 Control Red Light Cable	
Communication cable (factory assembled)	W104	PMU-DI	4DI-RJ451	66.9/1700	PMU to 4DI SPD communication network cable	
Communication cable (factory assembled)	W105	PMU-RS485	RDU501-COM3	70.9/1800	PMU to RDU501 COM3 meter communication network cable	
Communication cable (factory assembled)	W106	4DI-DI1	RDU501-Sensor2	11.8/300	4DI to RDU501 Smoke 2 SPD Communication Network Cable	
Communication cable (factory assembled)	W108	HMI_485-2	HMI-C	29.5/750	RDU501 COM2 to HMI communication cable	
Communication cable (factory assembled)	W109	RDU501-Sensor1	THD-RJ11	27.6/700	RDU501 to PMC cabinet THD communication cable	
Power cable (factory assembled)	W08	HMI-P	PMU-HMI DC+ DC-	70.9/1800	PMU to HMI power cable	

SHEET NO. 5 / 13	DRAWN BY: Nilesch Patil	DATE: 6/10/2024	DWG NO. SR2N02010NAA1
CHANGE NO.	APPROVED BY: Jakub Fencel	REVISION: 505 N. CLEVELAND AVE WESTERVILLE OH 43081	DATE (LATEST REV.)
PAGE DESCRIPTION: 3.a- Cable overview : =vRow+8PMC-W115 - =vRow+14PMU-W08	TITLE / DESCRIPTION: Vertiv™ SmartRow™ 2: 2x IT Rack 10kW		

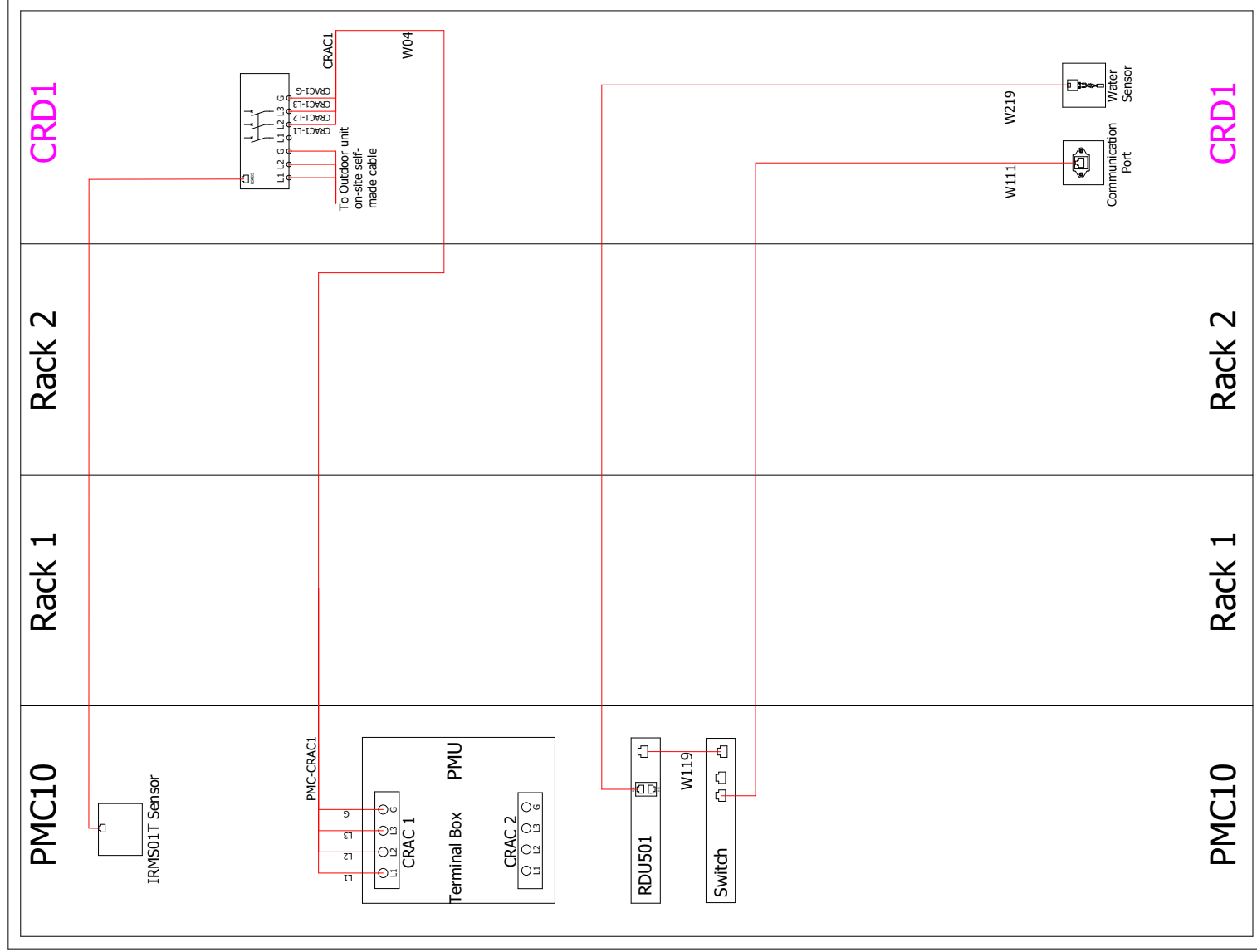
FC & Geist PDUs -SR2 for 10K(2*ITRack)



— Cables connected at assembly

SHEET NO. 6 / 13	DRAWN BY: Nilesh Patil	DWG NO. SR2N02010NAA1	VERTIV™
	APPROVED BY: Jakub Fencel		
CHANGE NO.		REVISION:	505 N. CLEVELAND AVE WESTERVILLE OH 43081
PAGE DESCRIPTION: 4- PDU wiring diagram	TITLE / DESCRIPTION: Vertiv™ SmartRow™ 2: 2x IT Rack 10kW		

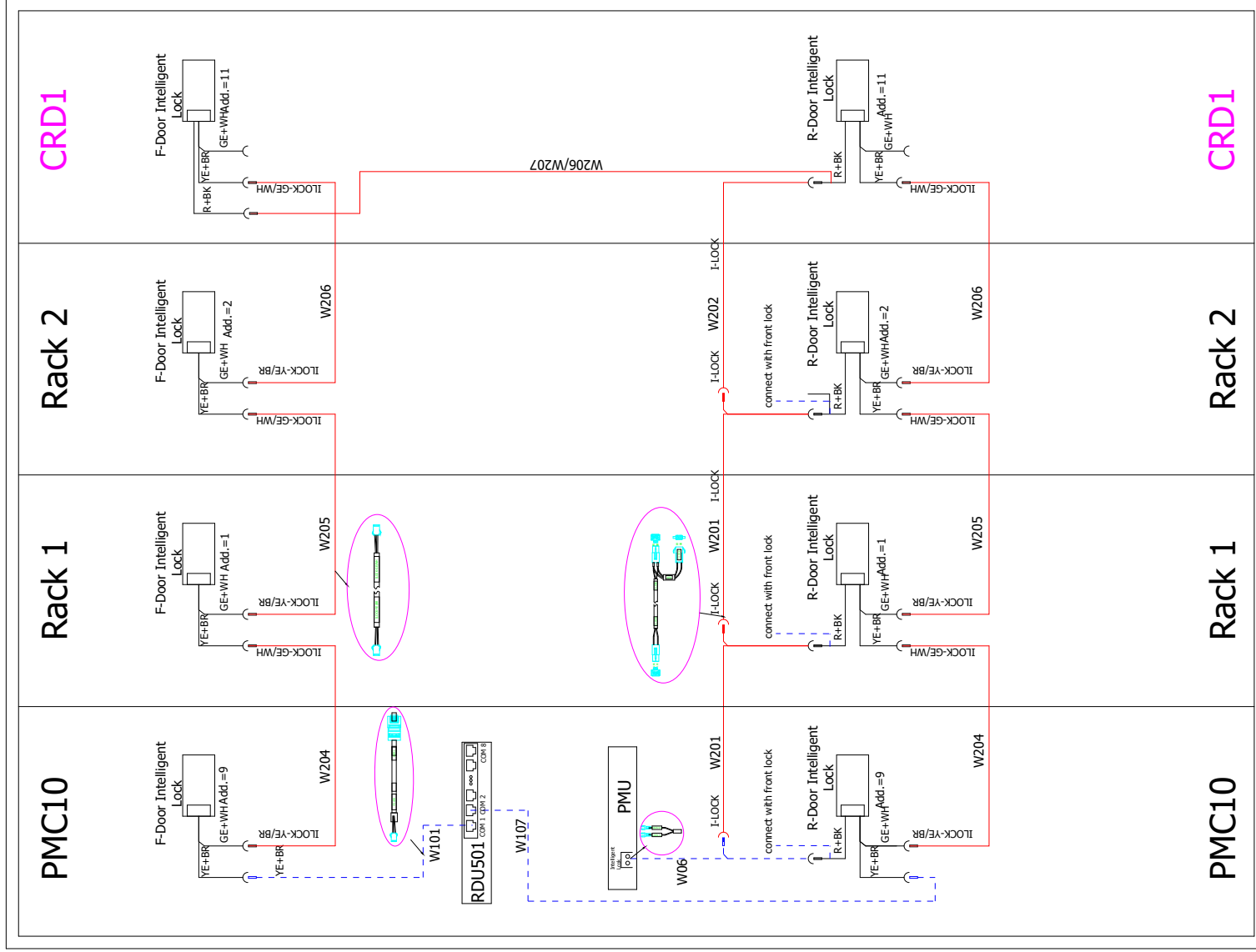
CRVs(CRD10)-SR2 for 10K (2*ITRack)



--- Factory connected cables
 --- Cables connected at assembly

SHEET NO. 7 / 13	DRAWN BY: Nilesh Patil	DWG NO. SR2N02010NAA1	DATE (LATEST REV.)
	APPROVED BY: Jakub Fencel		
CHANGE NO.		REVISION:	505 N. CLEVELAND AVE WESTERVILLE OH 43081
PAGE DESCRIPTION: 4.a- Air conditioner wiring diagram	TITLE / DESCRIPTION: Vertiv™ SmartRow™ 2: 2x IT Rack 10kW		

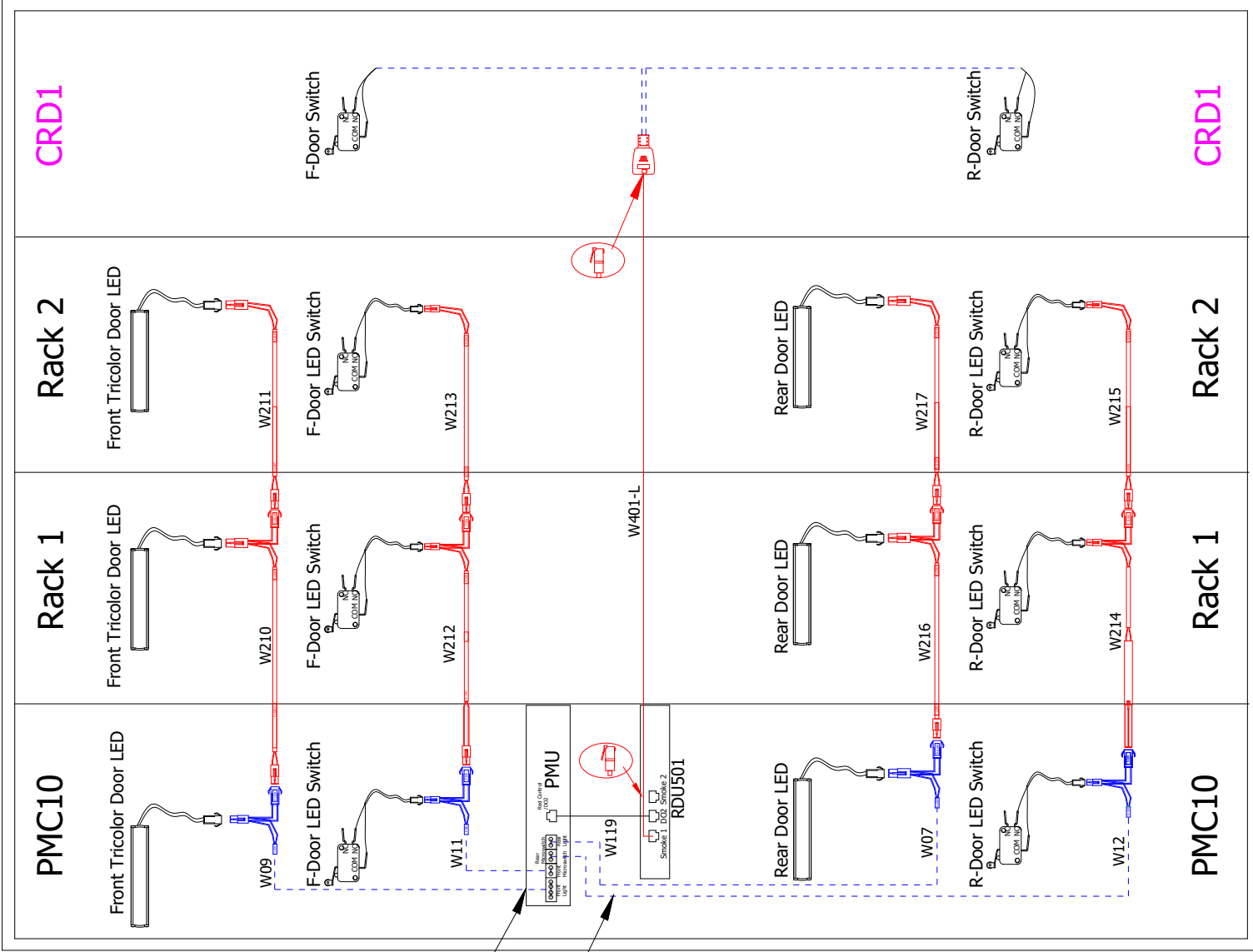
Intelligent Locks -SR2 for 10k (2*ITRack)



Factory connected cables
 Cables connected at assembly

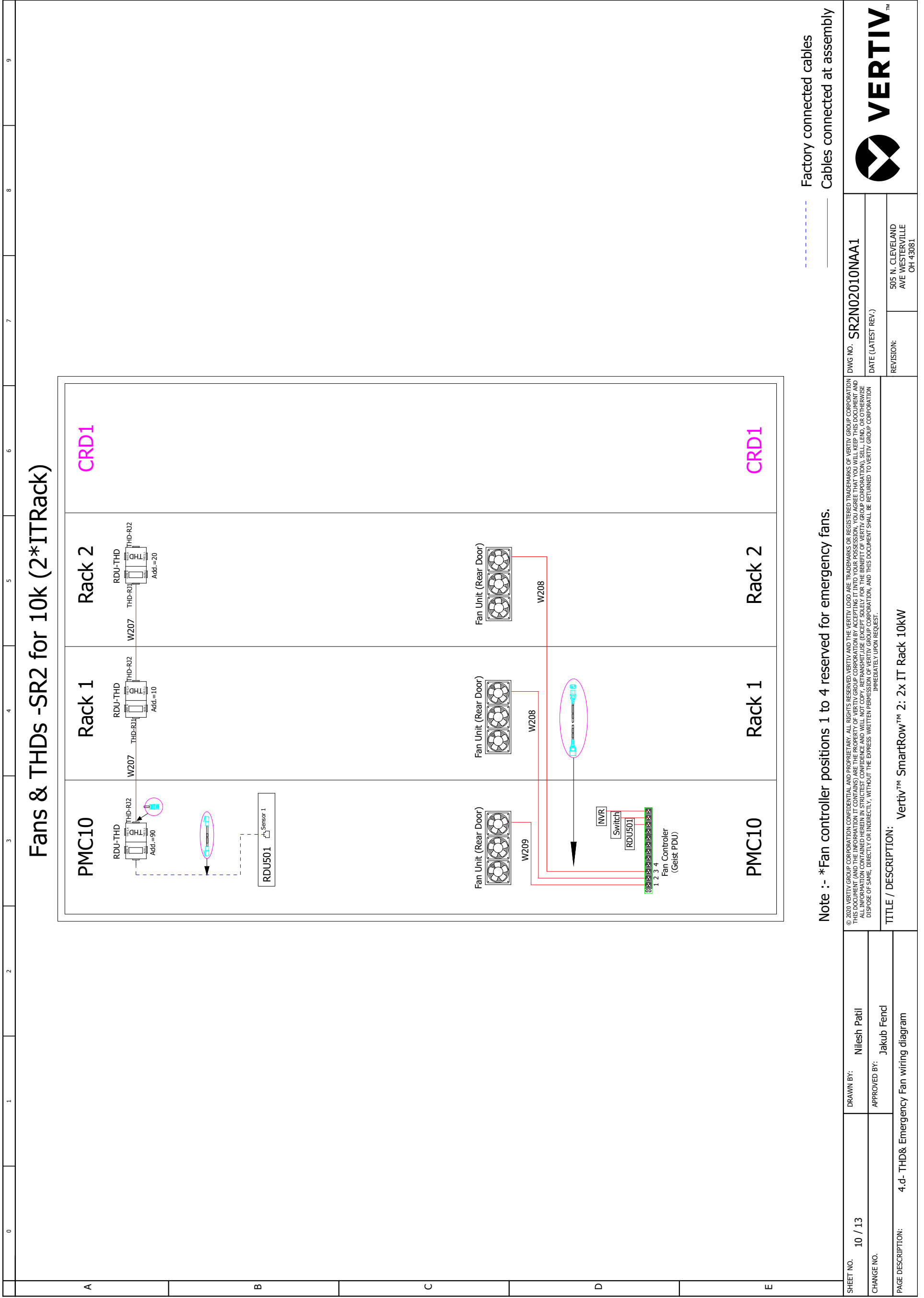
SHEET NO. 8 / 13	DRAWN BY: Nilesh Patil	DWG NO. SR2N02010NAA1	
CHANGE NO.	APPROVED BY: Jakub Fenc	DATE (LATEST REV.)	
PAGE DESCRIPTION: 4.b- Intelligent lock wiring diagram	TITLE / DESCRIPTION: Vertiv™ SmartRow™ 2: 2x IT Rack 10kW		REVISION: 505 N. CLEVELAND AVE WESTERVILLE OH 43081

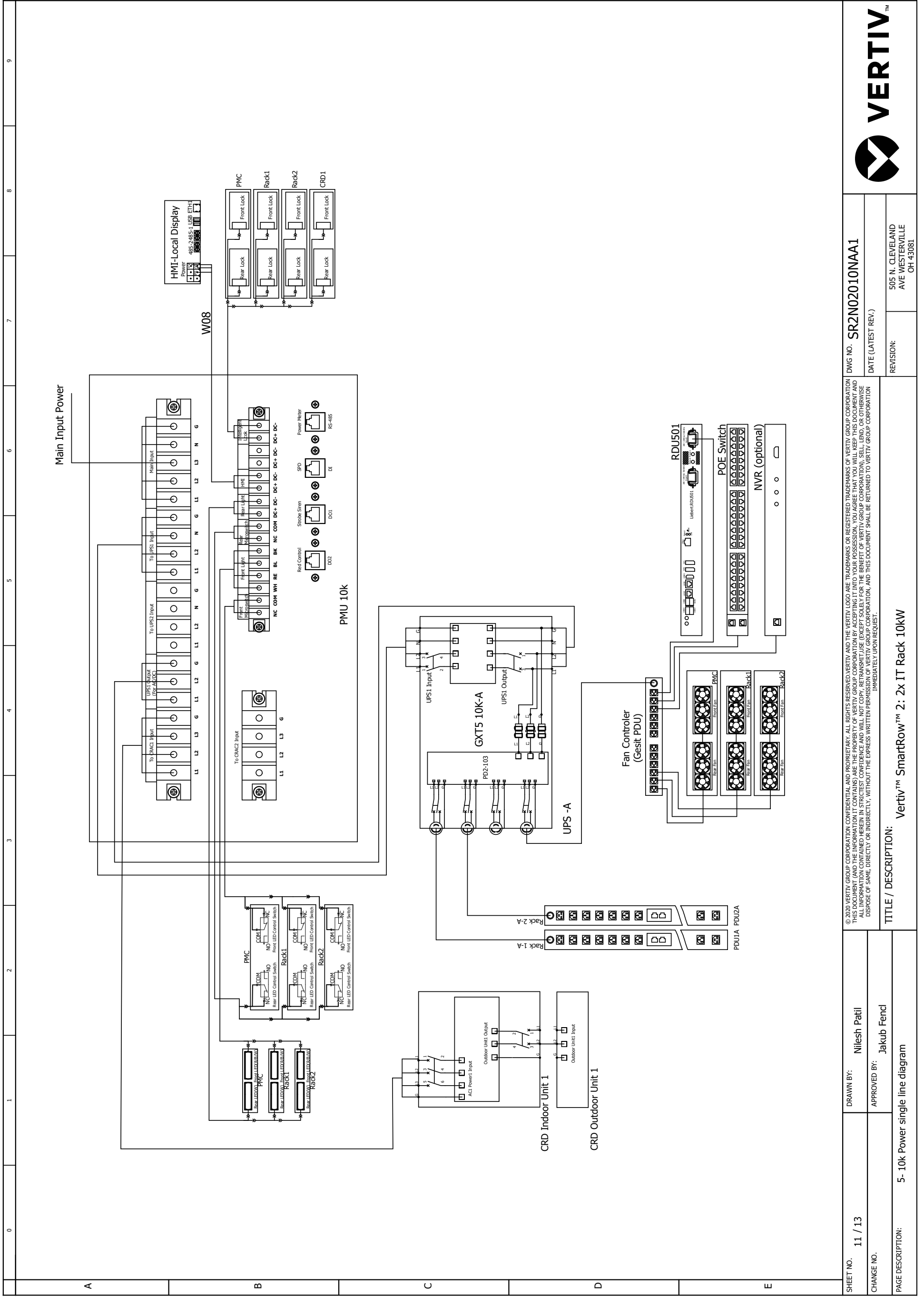
LED & Micro Switch -SR2 for 10k (2*ITRack)



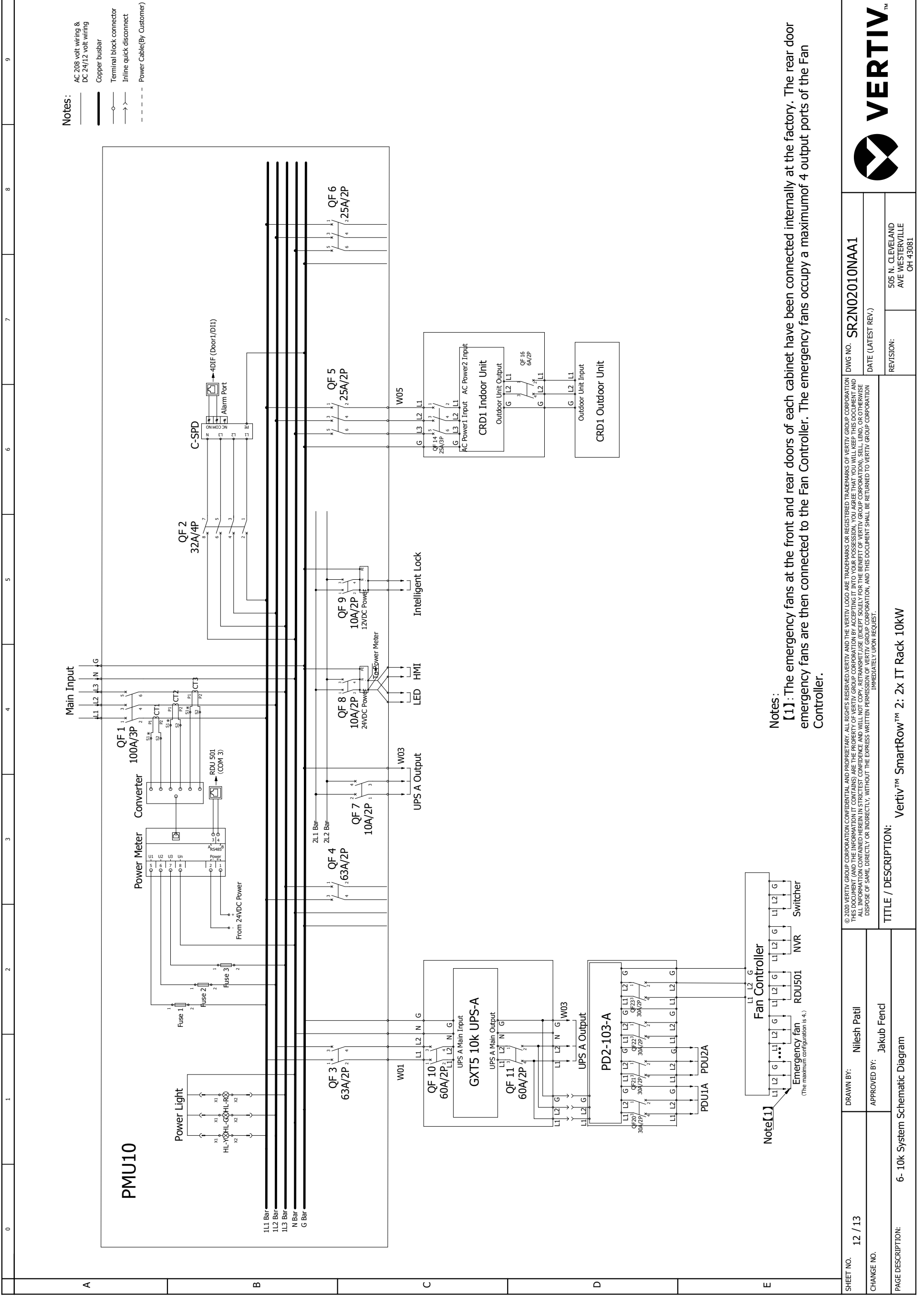
Factory connected cables
 Cables connected at assembly

SHEET NO. 9 / 13	DRAWN BY: Nilesh Patil	DWG NO. SR2N02010NAA1	DATE (LATEST REV.)
	APPROVED BY: Jakub Fenc		
CHANGE NO.		VERTIV™	
PAGE DESCRIPTION: 4.c- LED&Micro Switch wiring diagram	TITLE / DESCRIPTION: Vertiv™ SmartRow™ 2: 2x IT Rack 10kW		



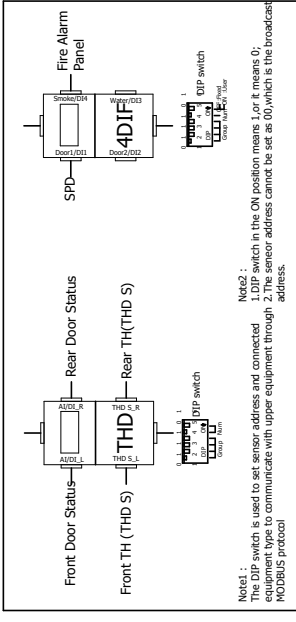
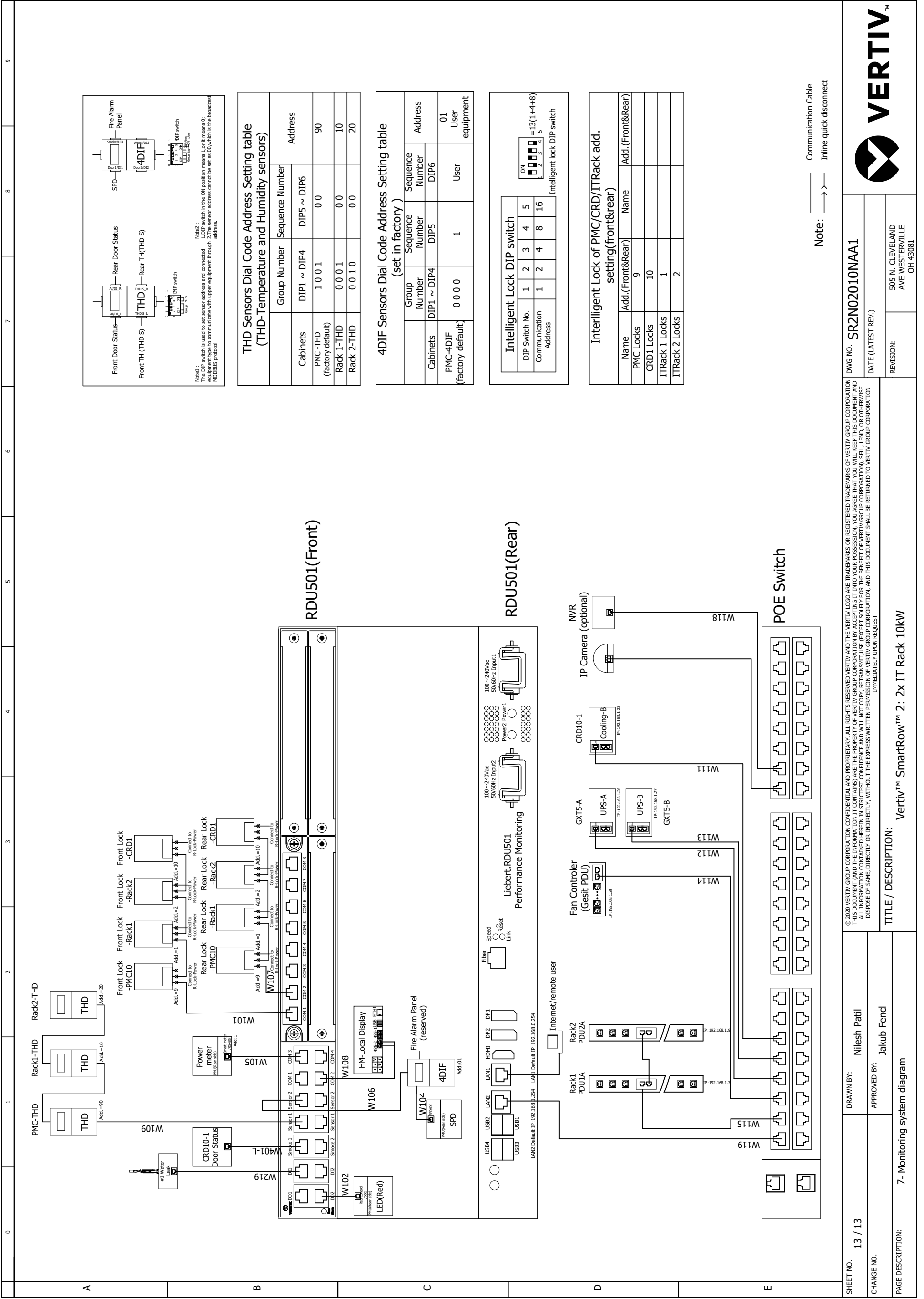


SHEET NO. 11 / 13	DRAWN BY: Nilesh Patil	© 2020 VERTIV GROUP CORPORATION CONFIDENTIAL AND PROPRIETARY. ALL RIGHTS RESERVED. VERTIV AND THE VERTIV LOGO ARE TRADEMARKS OR REGISTERED TRADEMARKS OF VERTIV GROUP CORPORATION THIS DOCUMENT (AND THE INFORMATION IT CONTAINS) ARE THE PROPERTY OF VERTIV GROUP CORPORATION BY ACCEPTING IT INTO YOUR POSSESSION, YOU AGREE THAT YOU WILL KEEP THIS DOCUMENT AND ALL INFORMATION CONTAINED HEREIN IN STRICTLY CONFIDENTIAL AND WILL NOT COPY, REPRODUCE, TRANSMIT, USE (EXCEPT SOLELY FOR THE BENEFIT OF VERTIV GROUP CORPORATION), SELL, LEND, OR OTHERWISE DISPOSE OF SAME, DIRECTLY OR INDIRECTLY, WITHOUT THE EXPRESS WRITTEN PERMISSION OF VERTIV GROUP CORPORATION, AND THIS DOCUMENT SHALL BE RETURNED TO VERTIV GROUP CORPORATION IMMEDIATELY UPON REQUEST.	DWG NO. SR2N02010NAA1
CHANGE NO.	APPROVED BY: Jakub Fencel		DATE (LATEST REV.)
PAGE DESCRIPTION: 5- 10k Power single line diagram	TITLE / DESCRIPTION: Vertiv™ SmartRow™ 2: 2x IT Rack 10kW	REVISION: 505 N. CLEVELAND AVE WESTERVILLE OH 43081	VERTIV™



SHEET NO. 12 / 13	DRAWN BY: Nilesh Patil	DWG NO. SR2N02010NAA1	REVISION:
			DATE (LATEST REV.)
CHANGE NO.	APPROVED BY: Jakub Fencel	505 N. CLEVELAND AVE WESTERVILLE OH 43081	
PAGE DESCRIPTION: 6- 10k System Schematic Diagram	TITLE / DESCRIPTION: Vertiv™ SmartRow™ 2: 2x IT Rack 10kW		REVISION:
		DATE (LATEST REV.)	

© 2020 VERTIV GROUP CORPORATION CONFIDENTIAL AND PROPRIETARY. ALL RIGHTS RESERVED. VERTIV AND THE VERTIV LOGO ARE TRADEMARKS OR REGISTERED TRADEMARKS OF VERTIV GROUP CORPORATION. THIS DOCUMENT (AND THE INFORMATION IT CONTAINS) ARE THE PROPERTY OF VERTIV GROUP CORPORATION BY ACCEPTING IT INTO YOUR POSSESSION, YOU AGREE THAT YOU WILL KEEP THIS DOCUMENT AND ALL INFORMATION CONTAINED HEREIN IN STRICTEST CONFIDENCE AND WILL NOT COPY, REPRODUCE, TRANSMIT, USE (EXCEPT SOLELY FOR THE BENEFIT OF VERTIV GROUP CORPORATION), SELL, LEND, OR OTHERWISE DISPOSE OF SAME, DIRECTLY OR INDIRECTLY, WITHOUT THE EXPRESS WRITTEN PERMISSION OF VERTIV GROUP CORPORATION, AND THIS DOCUMENT SHALL BE RETURNED TO VERTIV GROUP CORPORATION IMMEDIATELY UPON REQUEST.

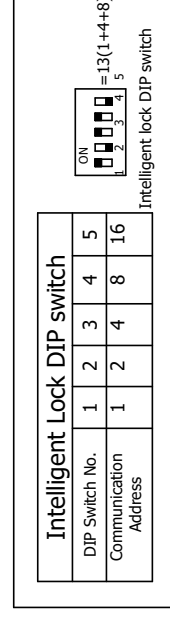


THD Sensors Dial Code Address Setting table (THD-Temperature and Humidity sensors)

Cabinets	Group Number	Sequence Number	Address
PMC -THD (factory default)	DIP1 ~ DIP4	DIP5 ~ DIP6	Address
Rack 1-THD	1 0 0 1	0 0	90
Rack 2-THD	0 0 0 1	0 0	10
	0 0 1 0	0 0	20

4DJF Sensors Dial Code Address Setting table (set in factory)

Cabinets	Group Number	Sequence Number	Address	
PMC-4DJF (factory default)	DIP1 ~ DIP4	DIP5	DIP6	Address
	0 0 0 0	1	User	01
			User equipment	



Interelligent Lock of PMC/CRD/ITRack add. setting(front&rear)

Name	Addr.(Front&Rear)	Name	Addr.(Front&Rear)
PMC Locks	9		
CRD1 Locks	10		
ITRack 1 Locks	1		
ITRack 2 Locks	2		

Note: ——— Communication Cable
 ———> Inline quick disconnect

SHEET NO. 13 / 13
 CHANGE NO.
 DRAWN BY: Nilesh Patil
 APPROVED BY: Jakub Fencel
 PAGE DESCRIPTION: 7- Monitoring system diagram

DWG NO. SR2N02010NAA1
 DATE (LATEST REV.)
 REVISION: 505 N. CLEVELAND AVE WESTERVILLE OH 43081

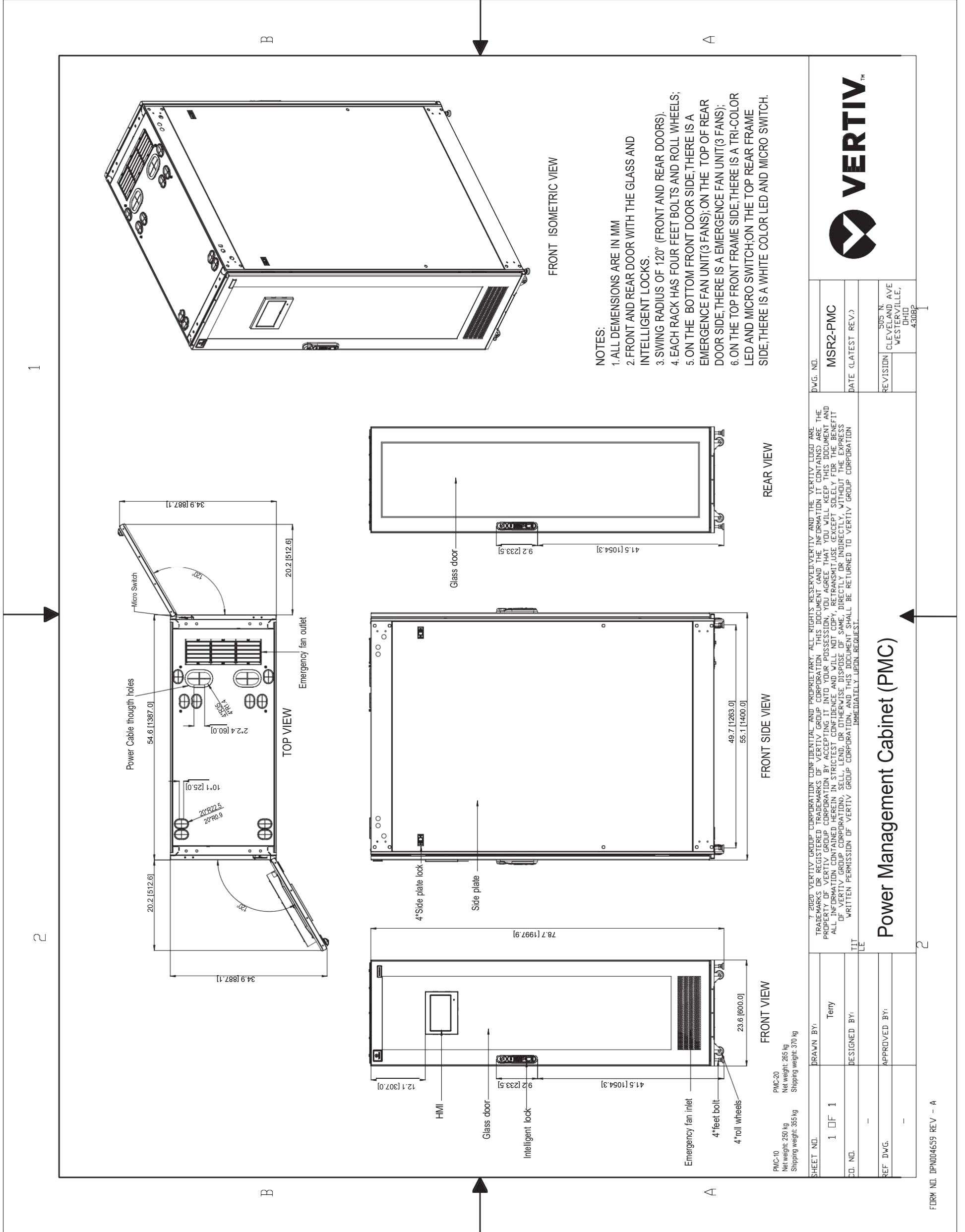
VERTIV logo

TITLE / DESCRIPTION: Vertiv™ SmartRow™ 2: 2x IT Rack 10kW

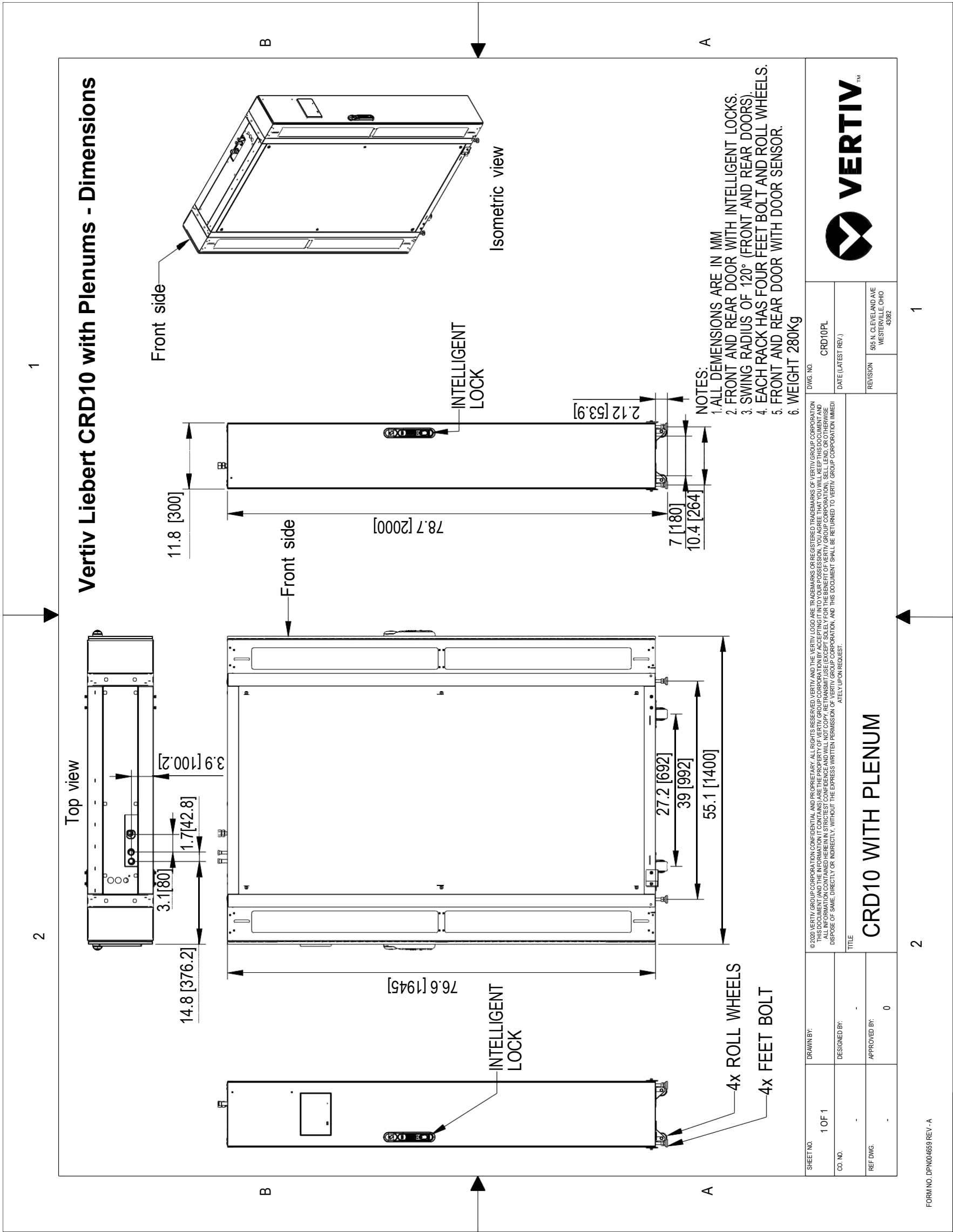
4. Field Supplied Cable & Part List

0	1	2	3	4	5	6	7	8	9	
A	FIELD SUPPLIED CABLE & PART LIST									
	PART	DETAILS								
	CONDENSER POWER SUPPLY CABLE (A)	2 conductors + PE, 16AWG or greater								
	FAN SPEED CONTROL (B)	2 conductors, 22AWG or greater								
	CONDENSATE PUMP TUBE	NPT 1/2 in. Female copper threaded joint for the tube connection								
B										
C	CONNECTION DETAILS REFER TO SL-70637 and SL-70700									
D										
E										
SHEET NO. 1 / 1		DRAWN BY: Petr Harant		DWG NO.						
CHANGE NO.		APPROVED BY: Tomáš Krech		DATE (LATEST REV.) 30.05.2024					REVISION:	
PAGE DESCRIPTION:		FIELD SUPPLIED CABLE & PART LIST							505 N. CLEVELAND AVE. WESTERVILLE OH 43081	
© 2020 VERTIV GROUP CORPORATION. CONFIDENTIAL AND PROPRIETARY. ALL RIGHTS RESERVED. VERTIV AND THE VERTIV LOGO ARE TRADEMARKS OR REGISTERED TRADEMARKS OF VERTIV GROUP CORPORATION. THIS DOCUMENT (AND THE INFORMATION IT CONTAINS) ARE THE PROPERTY OF VERTIV GROUP CORPORATION BY ACCEPTING IT INTO YOUR POSSESSION, YOU AGREE THAT YOU WILL KEEP THIS DOCUMENT AND ALL INFORMATION CONTAINED HEREIN IN STRICTEST CONFIDENCE AND WILL NOT COPY, REPRODUCE, RETRANSMIT, USE (EXCEPT SOLELY FOR THE BENEFIT OF VERTIV GROUP CORPORATION), SELL, LEND, OR OTHERWISE DISPOSE OF SAME, DIRECTLY OR INDIRECTLY, WITHOUT THE EXPRESS WRITTEN PERMISSION OF VERTIV GROUP CORPORATION, AND THIS DOCUMENT SHALL BE RETURNED TO VERTIV GROUP CORPORATION IMMEDIATELY UPON REQUEST.										

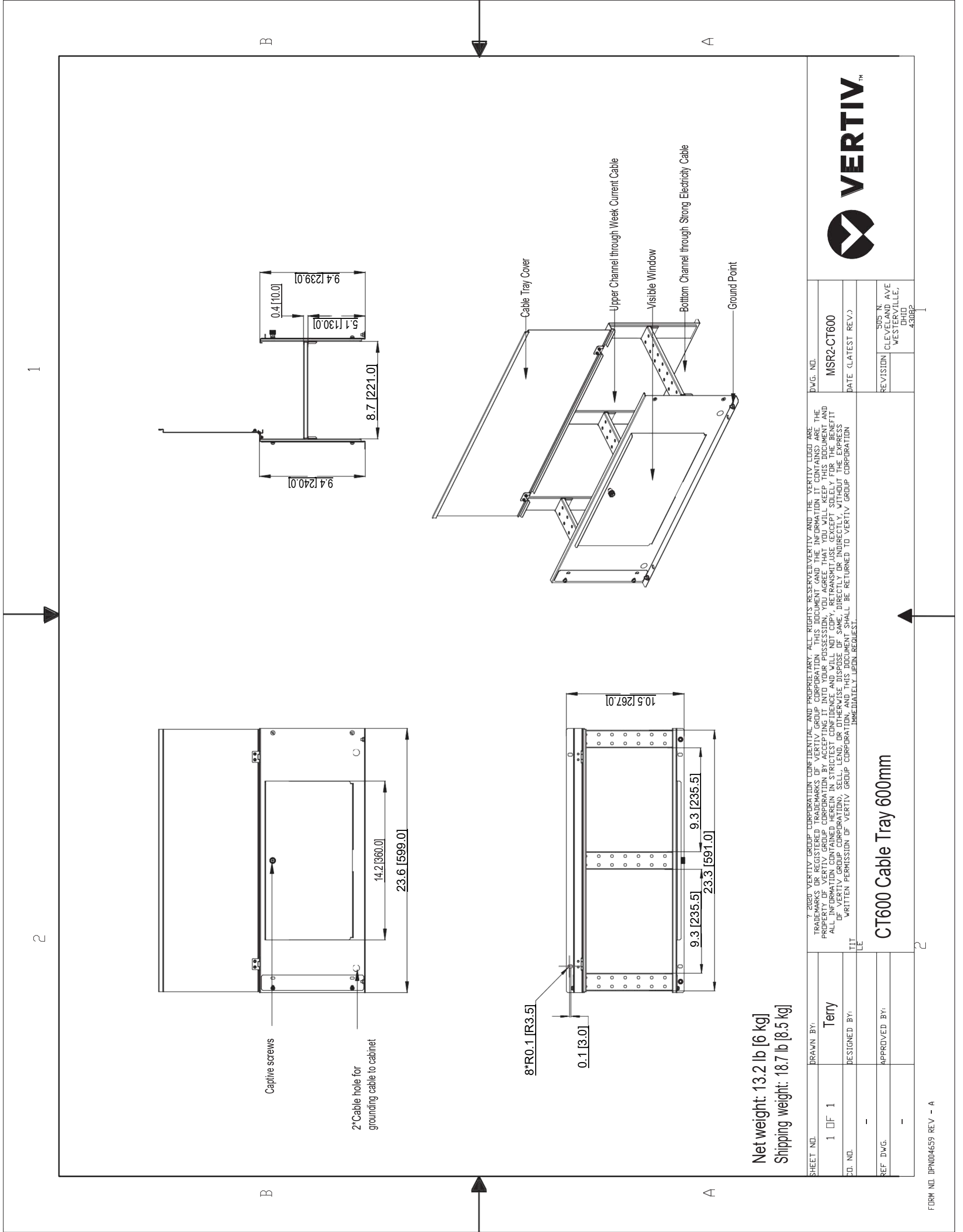
6. Vertiv MSR2 Power Management Cabinet (PMC)



7. Vertiv Liebert CRD10 with Plenums



10. Vertiv MSR2 - CT600 Cable Tray 600mm



SHEET NO. 1 OF 1		DRAWN BY: Terry		D.W.G. NO. MSR2-CT600		DATE (LATEST REV.)	
DESIGNED BY:		CHECKED BY:		REVISION		305 N. CLEVELAND AVE. WESTERVILLE, OHIO 43082	
REF. D.W.G.		APPROVED BY:					
7 2020 VERTIV GROUP CORPORATION CONFIDENTIAL AND PROPRIETARY. ALL RIGHTS RESERVED. VERTIV AND THE VERTIV LOGO ARE TRADEMARKS OR REGISTERED TRADEMARKS OF VERTIV GROUP CORPORATION. THIS DOCUMENT (AND THE INFORMATION IT CONTAINS) ARE THE PROPERTY OF VERTIV GROUP CORPORATION BY ACCEPTING IT INTO YOUR POSSESSION, YOU AGREE THAT YOU WILL KEEP THIS DOCUMENT AND INFORMATION CONFIDENTIAL AND NOT DISCLOSE, REPRODUCE, COPY, REPRODUCE, TRANSMIT, OR OTHERWISE DISSEMINATE IT IN ANY MANNER WITHOUT THE WRITTEN PERMISSION OF VERTIV GROUP CORPORATION. AND THIS DOCUMENT SHALL BE RETURNED TO VERTIV GROUP CORPORATION IMMEDIATELY UPON REQUEST.							
CT600 Cable Tray 600mm				FORM NO. DPN004659 REV - A			

11. Scope of Work

SmartRow2 Assembly

SERVICE SUMMARY

Feature	Detail
On-Site Service	Site trip(s) within the 48 contiguous states. Visit(s) to be scheduled by the customer between 7 am-5 pm, Monday-Friday (excluding weekends & national holidays).
Customer Support	Includes access to the Customer Resolution Center (1-800-543-2378) and the Vertiv Customer Services Network Online Internet portal for extent of product warranty.
Consolidation	The SmartRow2 includes numerous shippable units (typically pallets or boxes) that originate from multiple factories and suppliers. Vertiv consolidates these items into a single customer shipment and reduces the likelihood of shippable units being lost at the customer site. This benefits the customer by relieving the burden of keeping track of multiple partial shipments.
Inside Delivery	Vertiv Service will move the shippable units from the delivery truck to the Staging Area. Vertiv Services will unpackage the shippable units and remove/dispose of the packaging material so that it is ready for assembly. Vertiv will verify that all material on the sales order has been received.
Project Management	Included with Consolidation and Inside Delivery. Vertiv will assign a project manager for the project. The Project Manager will supervise the Consolidation and Inside Delivery Process and communicate hardware shipment schedules with the customer.
Assembly	SmartRow2 is assembled onsite by Vertiv factory-trained and authorized technicians equipped with Vertiv Proprietary tools and software. Vertiv CEs and Vertiv Partners are the only approved OEM service providers for Vertiv products. These technicians are supervised by a Site Manager who also gathers site-specific requirements like safety and work procedures
Factory Startup	Warranty inspection and startup validates the warranty and initializes the warranty coverage period

SERVICE PERFORMED

Consolidated Shipment

Shippable units may be available at time of order or built-to-order with a lead time. Vertiv safely stores these items in-warehouse until the customer is ready to receive the SmartRow2 in a single shipment

Inside Delivery

Vertiv Services will deliver the shippable units from the delivery truck to the Staging Area. Vertiv Services will unpackage the shippable units and remove/dispose of the packaging material so that it is ready for assembly. Vertiv will verify that all material has been received.

Change order option:

- There must be an appropriate loading dock with continuous, level floor from the dock to the staging area. If the shippable units must be moved up/down stairs, the customer must provide a suitable elevator, or charges for special rigging will be incurred. If the customer does not have an appropriate loading dock, nominal charges may/may-not apply for a lift-truck delivery.

Project Management

Vertiv will assign a project manager and a site manager for the project. The Project Manager will supervise the Consolidation and Inside Delivery Process and communicate schedules with the customer. The Site Manager will supervise the assembly, startup, warranty inspection and turn over the

Site-Specific Requirements

All personnel will be available for up to two hours per week for Site Access, Safety Training and other site-specific requirements Change Order Option:

- Vertiv can quote a price for additional man-hours if 2 hours per week is insufficient

Assembly

There shall be continuous, level floor between the Staging Area and the Installation Location so that heavy items can be moved via casters/pallet jacks.

Change Order Option:

- If there is not continuous level floor, the customer must provide or pay for any necessary lift/rigging equipment.

Project Management

Vertiv PMC, including RDU501 SmartRow2 Controller/Display

Vertiv will position, level, and bay together the PMC as described in the submittal documents.

The customer is responsible for providing primary electrical power to the PMC.

Vertiv will program and configure the SmartRow2 RDU501 controller/display. This includes setting IP addresses so that the customer can monitor the system status remotely

Change Order Option:

- Vertiv will quote IP addressing of equipment on the customer network, but this would be done by other personnel and scheduled separately. This is outside the scope of SmartRow2 assembly.

Vertiv IT Rack(s)

Vertiv will position, level, and bay together the Vertiv IT Racks as described in the submittal documents. Vertiv will not populate racks with customer IT gear, including blanking panels, servers, shelves, etc.

The customer must define addressing conventions (1,2,3,4, right-to-left or left-to-right) prior to start of work.

Cable Trays

Vertiv will install the SmartRow2 cable trays that are included with the SmartRow2 solution as described in the submittal documents

Liebert®CRV's, Temperature Sensors, Modbus cables, and associated Plenums

Vertiv will position and level the Liebert® CRV and attach the associated plenums to provide cooling to the SmartRow2.

Vertiv will connect the necessary temperature sensors.

The customer is responsible for piping and primary power to the CRV along with connecting CANBus cable between the CRV and heat rejection. All specific requirements (such as piping traps and proper electrical grounding) for correct product installation are detailed in the product installation manual.

After the SmartRow2 is assembled and the Liebert® CRV is piped and powered by the customer in accordance with the product installation manual, Vertiv will perform a factory warranty inspection along with the rest of the SmartRow2

Liebert®MC / CCD Condensers for Liebert®CRV's

The customer is responsible for installing the associated heat rejection. This includes primary power, CANBus communication wire, piping, refrigerant charging, and all other tasks in the Installation Manual. Any/all penetration points in the walls/ceilings/floors for any wiring or piping are also the customer's responsibility.

Rack PDUs

Vertiv will install and connect all rack PDUs (if applicable) including GXT5 power extensions (if applicable) as described in the submittal documents

Liebert®GXT5 Single Phase UPS's

Vertiv will install and connect all Liebert® GXT5 UPS's and connect power within the PMC cabinet and output to the PDUs as described in the submittal documents.

Additionally, Vertiv will install ancillary equipment such as Maintenance bypass and PD2-103 cabling and connectors if not already preinstalled.

After the SmartRow2 is assembled and Primary Power to the SmartRow2 is provided by the customer, Vertiv will perform factory startup of all GXT5 equipment along with the rest of the SmartRow2

Switch

Vertiv will install and connect the switch within the PMC cabinet. as described in the submittal documents

Firmware Updates

Vertiv will update firmware of any/all units to the current revision level. Shippable units are sourced globally and firmware evolves as products may be in stock with prior revisions

Wiring

Vertiv will run all necessary wiring for power and communication between cabinets as part of assembly. This includes setting IP/DIP switch settings for proper communication between the device and the PMC

Accessories

The SmartRow2 is available with lights, door locks/sensors, temperature sensors that Vertiv will connect and install.

Services associated with cameras are sold separately and out-of-scope for the SmartRow2 Assembly

RDU Monitor SmartRow2 mobile application

Services associated with the RDU Monitor SmartRow2 mobile applications are quoted separately and out-of-scope for SmartRow2 assembly

ASSUMPTIONS AND CLARIFICATIONS

- Vertiv start-up validates product warranty.
- Defects or damage resulting from installation not performed by Vertiv are not covered.
- Parts and Labor coverage is in accordance with Product Warranty. If a modified warranty is purchased, terms default to that specific package.
- Any customer site visit is limited to eight (8) hours per visit. Any time beyond forty (40) hours/wk or eight (8) hrs/day or additional Startup visits will be billed separately.
- Expenses incurred due to delays that are beyond the control of Vertiv may be billed at cost.
- Startup visit must be scheduled confirmation of proper installation (if Vertiv not involved with installation).
- This pricing excludes any load bank testing. This can also be quoted separately if required.
- Pricing excludes activities associated with 3rd party commissioning
- Pricing excludes any type of circuit breaker NEMA testing. This can also be quoted separately if required.
- Customer/Installing contractor is responsible for providing elevated access as necessary.
- Any additional requests beyond the scope of this document will be billed separately by Vertiv.
- Vertiv will not perform physical changes to the site building (such as drilling holes, etc.)

CUSTOMER RESPONSIBILITIES

In order to provide timely, accurate and thorough execution of the services described herein, Vertiv requests the following:

- Point of Contact: Provide an authorized point of contact(s), specific for the scope of work, for scheduling and coordination purposes.
- Scheduling: Make dates available for scheduling service. All visits must be requested 4 weeks in advance for assembly and 10 days for startup/warranty-inspection of need by contacting the Vertiv Project Manager. Site must be available for 5 consecutive business days. Customer may choose to pay for premium time if weekend work is necessary.
- Site Access: Prior to time of scheduled work, provide site access including any customer required escort, security clearance, safety training and badging for Vertiv personnel.
- Equipment Access: Convenient access to the equipment covered by the Scope of Work. Prior to scheduled time of work, notify Vertiv personnel of any special requirements for equipment access including lifts, ladders, etc.
- Shutdown: Service may require shutdown of load to ensure electrical connection integrity.
- Notification: If for any reason the work cannot be performed during scheduled time, notify Vertiv personnel 24-hours prior to scheduled event.
- Provide Method of Procedure (MOP) requirements/ templates, and required review period(s)

TERMS AND CONDITIONS

Subject to all Terms & Conditions as noted in the Vertiv Terms & Conditions or the terms of a Master Agreement between the parties, if any, shall apply.



SmartRow 2 Scope of Work Checklist

Customer Name: _____

Project Name: _____

Project Number: _____

This document is to serve as a checklist to help identify and budget the various work activities involved with assembling and installing a SmartRow 2. It is the customers responsibility to ensure all tasks are assigned to partners which will result in a successful SmartRow 2 project.

Contact Vertiv for available local support resources to provide technical guidance as needed. Call 800 543-2378

The **X** indicates the responsible party for that task. Multiple **X**'s indicate shared responsibility.

This document is provided as a reference document and does not replace any product manuals or supporting documentation. Always read all product documentation before performing any work.

Customer (Name) *includes responsibility for Mechanical, Electrical, and/or General Contractors as needed* : _____

Project Management: _____

Assembly Team Lead: _____

Consolidator: _____

Vertiv Warranty Inspection Tech: _____

Vertiv Sales Rep (LVO): _____

