



Solution: SR2N03010NAA1

1. Change Log	3
2. Site Planning Datasheet	4
3. Interconnection Guide (ICG)	5
4. Field Supplied Cable & Part List	19
5. Vertiv MSR2 600mm IT Rack	20
6. Vertiv MSR2 Power Management Cabinet (PMC)	21
7. Vertiv Liebert CRD10 with Plenums	22
8. Power Management Unit - 10kW (PMU10)	23
9. PMU10 Terminal Blocks Size	24
10. Vertiv MSR2 - CT600 Cable Tray 600mm	25
11. Scope of Work	26

1. Change Log

Rev	Date	Author	Description	Number of Change
A	1/29/2024	MG	Initial Release	CO-1083702
B	4/4/2024	TK	Updated site planning datasheet, minor changes to interconnection guide, removal of SOW checklist	CO-1087618
C	6/10/2024	TK	Updated connection guide, added updated SOW checklist, updated design	CO-1091967

2. Site Planning Datasheet

Smart Row 2 Site Planning Datasheet (208V, 3 phase, 4 wire + PE)

Configuration Number	Part Number	Max Row Capacity (kW)	IT Racks per Row	Capacity per Rack (kW)	Cooling Units per Row	pdu count	Main Input Breaker Size ⁶	Per Condenser Breaker Size	Per Condenser Dry Weight kg (lbs)	Row Dimensions (L x H x D) mm (in) ⁷	Row Weight kg (lbs)	Min. Staging Area m ² (ft ²)
1	SR2N02010NAA1	10	2	5	1	2	100A	N/A ⁵	60 (132.3)	2100 (82.7) x 2271 (107) x 1400 (55.2)	1463 (3227)	14.41 (155.2)
2	SR2N02010PAA1	10	2	5	1	4	100A	N/A ⁵	60 (132.3)	2100 (82.7) x 2271 (107) x 1400 (55.2)	1491 (3288)	14.99 (161.4)
3	SR2N02010FAA1	10	2	5	2	4	100A	N/A ⁵	60 (132.3)	2400 (94.5) x 2271 (107) x 1400 (55.2)	2112 (4656)	17.67 (190.2)
4	SR2N03010NAA1	10	3	3	1	3	100A	N/A ⁵	60 (132.3)	2700 (106.3) x 2271 (107) x 1400 (55.2)	1633 (3601)	15.76 (169.7)
5	SR2N03010PAA1	10	3	3	1	6	100A	N/A ⁵	60 (132.3)	2700 (106.3) x 2271 (107) x 1400 (55.2)	1675 (3694)	16.34 (175.9)
6	SR2N03010FAA1	10	3	3	2	6	100A	N/A ⁵	60 (132.3)	3000 (118.2) x 2271 (107) x 1400 (55.2)	2296 (5061)	19.02 (204.8)
7	SR2N03020NAA1	20	3	6	1	3	175A	15A	118 (260.2)	2700 (106.3) x 2271 (107) x 1400 (55.2)	1863 (4108)	18.46 (198.8)
8	SR2N03020PAA1	20	3	6	1	6	175A	15A	118 (260.2)	2700 (106.3) x 2271 (107) x 1400 (55.2)	1905 (4201)	20.51 (220.8)
9	SR2N03020FAA1	20	3	6	2	6	175A	15A	118 (260.2)	3000 (118.2) x 2271 (107) x 1400 (55.2)	2526 (5568)	24.42 (262.9)
10	SR2N04020NAA1	20	4	5	1	4	175A	15A	118 (260.2)	3300 (130) x 2271 (107) x 1400 (55.2)	2033 (4483)	19.81 (213.3)
11	SR2N04020PAA1	20	4	5	1	8	175A	15A	118 (260.2)	3300 (130) x 2271 (107) x 1400 (55.2)	2089 (4607)	21.86 (235.3)
12	SR2N04020FAA1	20	4	5	2	8	175A	15A	118 (260.2)	3600 (141.8) x 2271 (107) x 1400 (55.2)	2710 (5974)	25.77 (277.4)
13	SR2N05020NAA1	20	5	4	1	5	175A	15A	118 (260.2)	3900 (153.6) x 2271 (107) x 1400 (55.2)	2203 (4858)	21.16 (227.8)
14	SR2N05020PAA1	20	5	4	1	10	175A	15A	118 (260.2)	3900 (153.6) x 2271 (107) x 1400 (55.2)	2273 (5012)	23.21 (249.9)
15	SR2N05020FAA1	20	5	4	2	10	175A	15A	118 (260.2)	4200 (165.4) x 2271 (107) x 1400 (55.2)	2894 (6380)	27.12 (292)

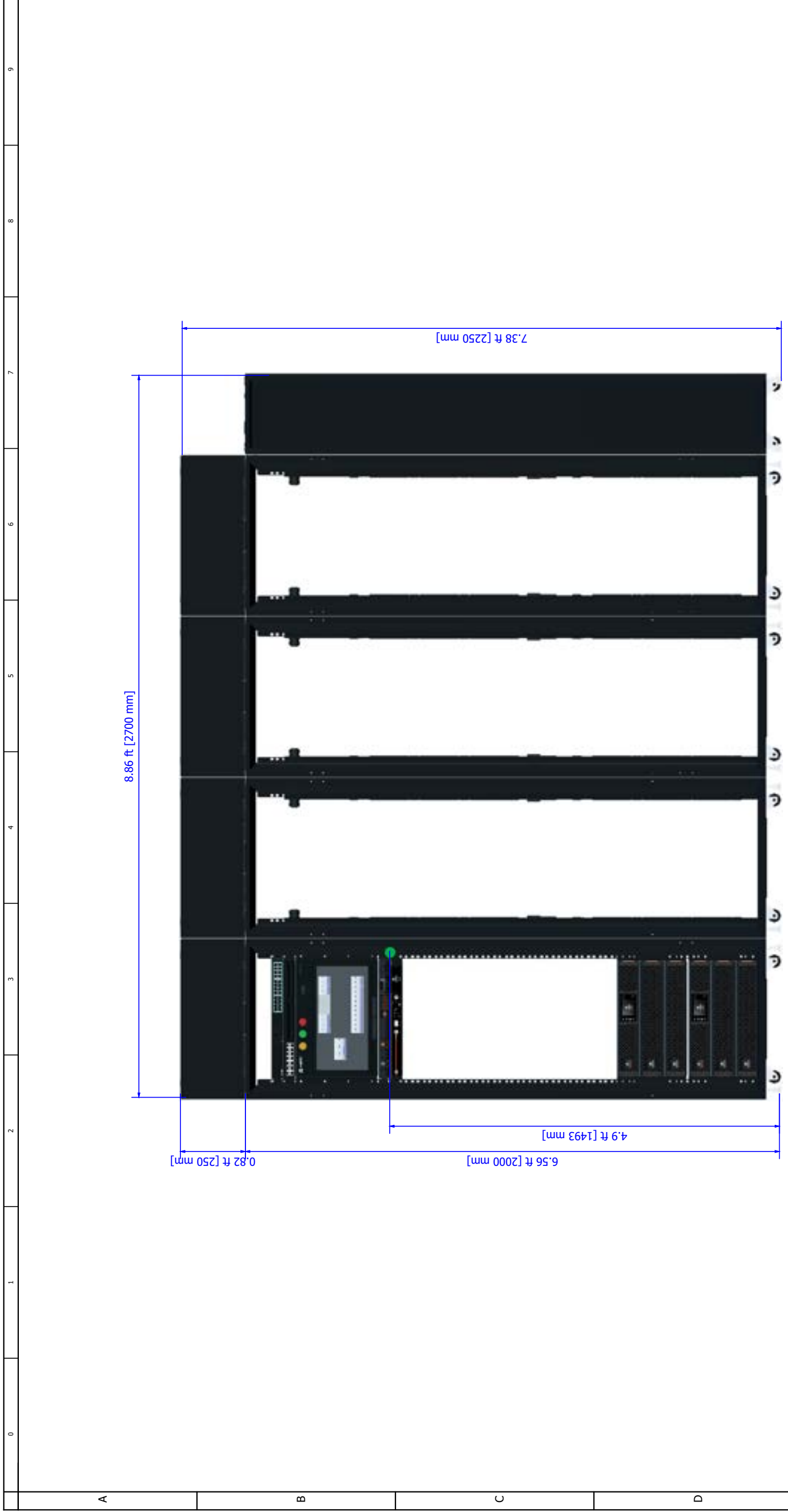
Notes:

- System Environmental Conditions: Indoors, 41 °F to 104 °F (5 °C to 40 °C), RH to 80% with Max dew point of 82.4 °F (28 °C)
- Floor surface must be level and continuous (expansion joints sealed, raised floor tile gaps sealed, no floor drains, etc).
- No building sprinkler head should be within 19.7 in (0.5 m).
- Install in accordance with national and local electrical codes
- 10kW condenser power is sourced from the indoor unit
- Cable Sizing: 100A = 3 AWG ; 175A = 2/0 AWG
- Row Dimensions do not include necessary space needed for access including per ADA or local codes.

SHEET NO.	DRAWN BY:	<small>© 2023 VERTIV GROUP CORPORATION. CONFIDENTIAL AND PROPRIETARY. ALL RIGHTS RESERVED. VERTIV AND THE VERTIV LOGO ARE TRADEMARKS OR REGISTERED TRADEMARKS OF VERTIV GROUP CORPORATION. THIS DOCUMENT AND THE INFORMATION IT CONTAINS ARE THE PROPERTY OF VERTIV GROUP CORPORATION. BY ACCEPTING IT INTO YOUR POSSESSION, YOU AGREE THAT YOU WILL KEEP THIS DOCUMENT AND ALL INFORMATION CONTAINED HEREIN IN STRICTEST CONFIDENCE AND WILL NOT COPY, REPRODUCE, RETRANSMIT, USE (EXCEPT SOLELY FOR THE BENEFIT OF VERTIV GROUP CORPORATION), SELL, LEND, OR OTHERWISE DISPOSE OF SAME, DIRECTLY OR INDIRECTLY, WITHOUT THE EXPRESS WRITTEN PERMISSION OF VERTIV GROUP CORPORATION. IMMEDIATELY UPON REQUEST.</small>	
	DESIGNED BY:		
CO. NO.	TITLE	DWG. NO.	DATE (LATEST REV)
REF DWG.	Smart Row 2 Site Planning Datasheet (208V, 3 phase, 4 wire + PE)	REVISION	506 N. CLEVELAND AVE WESTERVILLE, OHIO 43081

3. Interconnection Guide (ICG)

0	1	2	3	4	5	6	7	8	9			
A												
B	<p>Vertiv™ SmartRow™ 2: 3x IT Rack 10kW</p>											
C												
D	<p>Row IT Load Capacity: 10 kW Power Redundancy UPS: No Power Redundancy rPDU: No Cooling Redundancy: No Dimensions: Length: 8.86 ft [2700 mm] Depth: 4.6 ft [1400 mm] Height: 7.38 ft [2250 mm]</p>											
E												
<table border="1"> <tr> <td data-bbox="1764 379 1814 761">SHEET NO. 1 / 14</td> <td data-bbox="1764 761 1814 1118">DRAWN BY: Nilesh Patil</td> <td data-bbox="1764 1118 1814 1414">DNG NO. SR2N03010NAA1</td> <td data-bbox="1764 1414 1814 2915">  </td> </tr> <tr> <td data-bbox="1814 379 1864 761">CHANGE NO.</td> <td data-bbox="1814 761 1864 1118">APPROVED BY: Jakub Fencl</td> <td data-bbox="1814 1118 1864 1414">DATE (LATEST REV.)</td> <td data-bbox="1814 1414 1864 2915"> REVISION: 505 N. CLEVELAND AVE WESTERVILLE OH 43081 </td> </tr> <tr> <td colspan="2" data-bbox="1864 379 1915 761">PAGE DESCRIPTION: 1- Title page / cover sheet</td> <td colspan="2" data-bbox="1864 761 1915 2915"> TITLE / DESCRIPTION: Vertiv™ SmartRow™ 2: 3x IT Rack 10kW </td> </tr> </table>	SHEET NO. 1 / 14	DRAWN BY: Nilesh Patil	DNG NO. SR2N03010NAA1		CHANGE NO.	APPROVED BY: Jakub Fencl	DATE (LATEST REV.)	REVISION: 505 N. CLEVELAND AVE WESTERVILLE OH 43081	PAGE DESCRIPTION: 1- Title page / cover sheet		TITLE / DESCRIPTION: Vertiv™ SmartRow™ 2: 3x IT Rack 10kW	
SHEET NO. 1 / 14	DRAWN BY: Nilesh Patil	DNG NO. SR2N03010NAA1										
CHANGE NO.	APPROVED BY: Jakub Fencl	DATE (LATEST REV.)	REVISION: 505 N. CLEVELAND AVE WESTERVILLE OH 43081									
PAGE DESCRIPTION: 1- Title page / cover sheet		TITLE / DESCRIPTION: Vertiv™ SmartRow™ 2: 3x IT Rack 10kW										




Front View

Notes:

1. Row IT Load Capacity is driven by number of IT-Racks (IT-Rack x 3.33 kW per rack).
2. System Environmental Conditions: Indoors, 41 F to 104 F (5 C to 40 C), RH to 80% with Max dew point of 82.4 F (28 C).
3. Floor surface must be level and continuous (expansion joints sealed, raised floor tile gaps sealed, no floor drains, etc).
4. No building sprinkler head should be within 19.7 in (0.5 m).

● **Temperature Sensor**

SHEET NO.	2 / 14	DRAWN BY: Nilesh Patil	DWG. NO.: SR2N03010NAA1	 VERTIV TM
CHANGE NO.		APPROVED BY: Jakub Fencel	DATE (LATEST REV.)	
PAGE DESCRIPTION: 2- vRow Front View		TITLE / DESCRIPTION: Vertiv™ SmartRow™ 2: 3x IT Rack 10kW		
		REVISION: 505 N. CLEVELAND AVE WESTERVILLE OH 43081		

A	<p>Top View</p> <p>Note[1]</p> <p>Note[2]</p>	<p>Top View Showing Top Connections</p>	<p>Top View Showing Bottom Connections (Possible with raised floor)</p>	<p>PMC Connection Details</p>	<p>CRD Connection Details</p>	<p>Front of Unit (Internal Piping and top of unit hidden for clarity)</p>	<p>Front of Unit</p>	<p>Dimensions in "mm[in]"</p>	<p>0 1 2 3 4 5 6 7 8 9</p>																												
B	<p>Note :- 1. Cable trough not shown to make top panel details visible. 2. Do not use the marked hole for bottom cable routing.</p>																																				
C	<table border="1"> <thead> <tr> <th colspan="2">Unit Top Connections</th> <th colspan="2">Unit Bottom Connections</th> </tr> </thead> <tbody> <tr> <td>RLT</td> <td>Refrigerant Liquid Line Inlet</td> <td>RLT</td> <td>Refrigerant Liquid Line Inlet</td> </tr> <tr> <td>RGT</td> <td>Refrigerant Gas Line Outlet</td> <td>RGT</td> <td>Refrigerant Gas Line Outlet</td> </tr> <tr> <td>CPT</td> <td>Condensate Pump</td> <td>CPT</td> <td>Condensate Pump</td> </tr> <tr> <td>HVT</td> <td>High Voltage Top Connection</td> <td>HVT</td> <td>High Voltage Bottom Connection</td> </tr> <tr> <td>LVT</td> <td>Low Voltage Top Connection</td> <td>LVT</td> <td>Low Voltage Bottom Connection</td> </tr> <tr> <td>GPT</td> <td>Grounding Point</td> <td>CGT</td> <td>Condensate Gravity</td> </tr> </tbody> </table>								Unit Top Connections		Unit Bottom Connections		RLT	Refrigerant Liquid Line Inlet	RLT	Refrigerant Liquid Line Inlet	RGT	Refrigerant Gas Line Outlet	RGT	Refrigerant Gas Line Outlet	CPT	Condensate Pump	CPT	Condensate Pump	HVT	High Voltage Top Connection	HVT	High Voltage Bottom Connection	LVT	Low Voltage Top Connection	LVT	Low Voltage Bottom Connection	GPT	Grounding Point	CGT	Condensate Gravity	
Unit Top Connections		Unit Bottom Connections																																			
RLT	Refrigerant Liquid Line Inlet	RLT	Refrigerant Liquid Line Inlet																																		
RGT	Refrigerant Gas Line Outlet	RGT	Refrigerant Gas Line Outlet																																		
CPT	Condensate Pump	CPT	Condensate Pump																																		
HVT	High Voltage Top Connection	HVT	High Voltage Bottom Connection																																		
LVT	Low Voltage Top Connection	LVT	Low Voltage Bottom Connection																																		
GPT	Grounding Point	CGT	Condensate Gravity																																		
D	<p>Note :- Pipe sizes are for connection purposes and not the required line size. Consult thermal manuals for line sizes.</p>																																				
E	<p>SHEET NO. 3 / 14</p> <p>CHANGE NO.</p> <p>PAGE DESCRIPTION: 2. a-vRow Top View</p>	<p>DRAWN BY: Nilesh Patil</p> <p>APPROVED BY: Jakub Fend</p>	<p>TITLE / DESCRIPTION: Vertiv™ SmartRow™ 2: 3x IT Rack 10kW</p>	<p>DWG NO. SR2N03010NAA1</p> <p>DATE (LATEST REV.)</p> <p>REVISION: 505 N. CLEVELAND AVE WESTERVILLE OH 43081</p>		<p>© 2020 VERTIV GROUP CORPORATION. CONFIDENTIAL AND PROPRIETARY. ALL RIGHTS RESERVED. VERTIV AND THE VERTIV LOGO ARE TRADEMARKS OR REGISTERED TRADEMARKS OF VERTIV GROUP CORPORATION. THIS DOCUMENT (AND THE INFORMATION IT CONTAINS) ARE THE PROPERTY OF VERTIV GROUP CORPORATION. BY ACCEPTING IT INTO YOUR POSSESSION, YOU AGREE THAT YOU WILL KEEP THIS DOCUMENT AND ALL INFORMATION CONTAINED HEREIN IN STRICTEST CONFIDENCE AND WILL NOT COPY, REPRODUCE, MIRROR, RETRANSMIT, USE (EXCEPT SOLELY FOR THE BENEFIT OF VERTIV GROUP CORPORATION), SELL, LEND, OR OTHERWISE DISPOSE OF SAME, DIRECTLY OR INDIRECTLY, WITHOUT THE EXPRESS WRITTEN PERMISSION OF VERTIV GROUP CORPORATION, AND THIS DOCUMENT SHALL BE RETURNED TO VERTIV GROUP CORPORATION IMMEDIATELY UPON REQUEST.</p>																															

Cable overview

Packaging No.	Cable Category	Cable No.	Tag1	Tag2	Length (inch/mm)	Description
0411A816	Water immersion to RDU501	W219	Water Leak1	RDU501_DI1	216.5 /5500	Water immersion 1 to RDU501 communication cable
	Smart door lock cascade	W201	PMC-LOCK	RACK1-LOCK	33.5/850	PMC to RACK1 power cascade cable
	Smart door lock cascade	W204	PMC-LOCK	Rack1-LOCK	33.5/850	PMC to Rack1 R-Door communication cascade cable
	Smart door lock cascade	W204	PMC-LOCK	Rack1-LOCK	33.5/850	PMC to Rack1 F-Door communication cascade cable
	Smart door lock cascade	W201	RACK1-LOCK	RACK2-LOCK	33.5/850	RACK1 to RACK2 power cascade cable
	Smart door lock cascade	W205	RACK1-LOCK	RACK2-LOCK	33.5/850	RACK1 to RACK2 F-Door communication cascade cable
	Smart door lock cascade	W205	RACK1-LOCK	RACK2-LOCK	33.5/850	RACK1 to RACK2 R-Door communication cascade cable
	Smart door lock cascade	W201	RACK2-LOCK	RACK3-LOCK	33.5/850	RACK2 to RACK3 power cascade cable
	Smart door lock cascade	W205	RACK2-LOCK	RACK3-LOCK	33.5/850	RACK2 to RACK3 F-Door communication cascade cable
	Smart door lock cascade	W205	RACK2-LOCK	RACK3-LOCK	33.5/850	RACK2 to RACK3 R-Door communication cascade cable
	Smart door lock cascade	W202	RACK3-LOCK	CRD2-LOCK	13.8/350	RACK3 to CRD2 power cascade cable
	Smart door lock cascade	W206	RACK3-LOCK	CRD2-LOCK	13.8/350	RACK3 to CRD2 F-Door communication cascade cable
	Smart door lock cascade	W206	RACK3-LOCK	CRD2-LOCK	13.8/350	RACK3 to CRD2 R-Door communication cascade cable
	CRV's microswitch and Smart door lock cascade	W206/W207	I-LOCK	F-R/BK, R-R/BK	82.7/2100	Smart door lock cable from front door to rear door in CRD1
	Front door light cascade cable	W210	PMC_FLIGHT	RACK1_FLIGHT	29.5/750	PMC to RACK1 front door LED light cascade cable
	Front door microswitch cascade cable	W212	PMC_F-SW	RACK1_F-SW	29.5/750	PMC to RACK1 Cascade cables for front door microswitches
	Rear door microswitch cascade cable	W214	PMC_R-SW	RACK1_R-SW	29.5/750	PMC to RACK1 Cascade cables for rear door microswitches
	Rear door light cascade cable	W216	PMC_RLIGHT	RACK1_RLIGHT	29.5/750	PMC to RACK1 rear door LED light cascade cable
	Front door light cascade cable	W210	RACK1_FLIGHT	RACK2_FLIGHT	29.5/750	RACK1 to RACK2 front door LED light cascade cable
	Front door microswitch cascade cable	W212	RACK1_F-SW	RACK2_F-SW	29.5/750	RACK1 to RACK2 Cascade cables for front door microswitches
	Rear door microswitch cascade cable	W214	RACK1_R-SW	RACK2_R-SW	29.5/750	RACK1 to RACK2 Cascade cables for rear door microswitches
	Rear door light cascade cable	W216	RACK1_RLIGHT	RACK2_RLIGHT	29.5/750	RACK1 to RACK2 rear door LED light cascade cable
	Front door light cascade cable	W211	RACK2_FLIGHT	RACK3_FLIGHT	29.5/750	RACK2 to RACK3 front door LED light cascade cable
	Front door microswitch cascade cable	W213	RACK2_F-SW	RACK3_F-SW	29.5/750	RACK2 to RACK3 Cascade cables for front door microswitches
	Rear door microswitch cascade cable	W215	RACK2_R-SW	RACK3_R-SW	29.5/750	RACK2 to RACK3 Cascade cables for rear door microswitches
	Rear door light cascade cable	W217	RACK2_RLIGHT	RACK3_RLIGHT	29.5/750	RACK2 to RACK3 rear door LED light cascade cable
	CRV's microswitch and Smart door lock cascade	W401-L	RDU:Smoke1	W401-L-385	177.2/4500	Microswitch communication cable from PMC to CRD1

SHEET NO.	4 / 14	DRAWN BY:	Nilesh Patil		VERTIV™
CHANGE NO.		APPROVED BY:	Jakub Fencel	DWG NO.: SR2N03010NAA1	
PAGE DESCRIPTION:	3- Cable overview : =vRow+9CRV1-W219 - =vRow+12CRV1-W401-L			DATE (LATEST REV.)	
TITLE / DESCRIPTION: Vertiv™ SmartRow™ 2: 3x IT Rack 10kW				REVISION: 505 N. CLEVELAND AVE WESTERVILLE OH 43081	


Cable overview

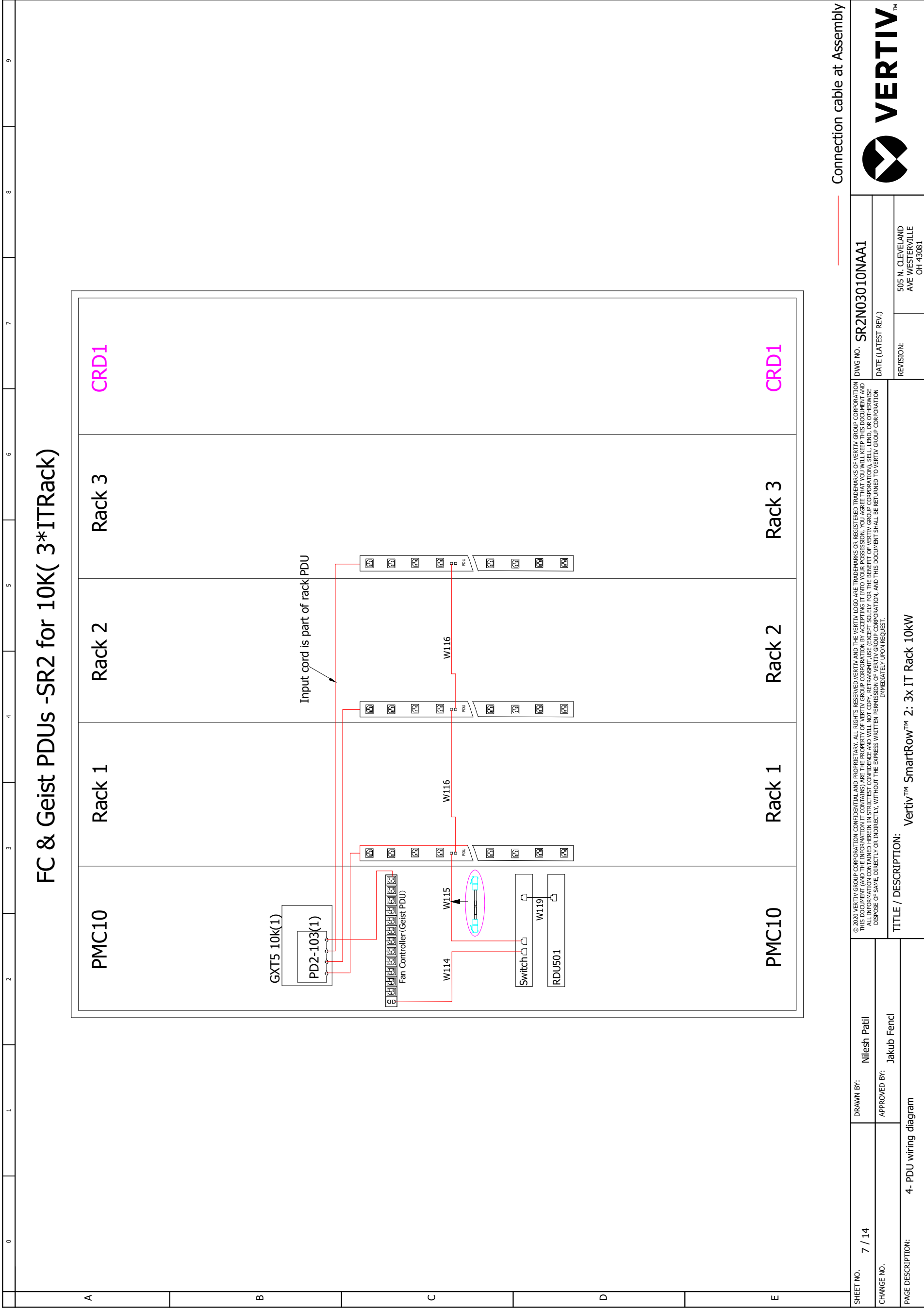
Packaging No.	Cable Category	Cable No.	Tag1	Tag2	Length (inch/mm)	Description	
0411A816	THD cascading	W207	PMC-THD-RJ2	RACK1-THD-RJ1	33.5/850	PMC to RACK1 Cascade Cable	
	Emergency fan to FC	W208	FC Port2	RACK1-FAN	122/3100	Rack1 Emergency fan to FC controller cable	
	THD cascading	W207	RACK1-THD-RJ1	RACK2-THD-RJ1	33.5/850	RACK1 to RACK2 Cascade Cable	
	Emergency fan to FC	W208	FC Port3	RACK2-FAN	122/3100	Rack2 Emergency fan to FC controller cable	
	THD cascading	W207	RACK2-THD-RJ1	RACK3-THD-RJ1	33.5/850	RACK2 to RACK3 Cascade Cable	
	Emergency fan to FC	W208	FC Port4	RACK3-FAN	122/3100	Rack3 Emergency fan to FC controller cable	
	Emergency fan to FC	W209	FC Port1	PMC-FAN	51.2/1300	PMC Emergency fan to FC controller cable	
	Communication cable	W116	PDU1A	PDU2A	157.5/4000	PDU1A to PDU2A communication cable	
	Communication cable	W116	PDU2A	PDU3A	157.5/4000	PDU2A to PDU3A communication cable	
	Communication cable	W114	FC	Switcher(From FC)	70.9/1800	FC to Switch communication cable	
0411A859	Communication cable	W115	PDU	Switcher(From PDU)	70.9/1800	PDU to Switch communication cable	
	Communication cable	W119	RDU501	Switcher(From RDU501)	47.2/1200	RDU501 to Switch Communication Cable	
	Power cable	W04	PMU	CRD1 L1 L2 N G	165.4/4200	PMU to CRD1 power cable	
	Power cable	W05	PMU TO CRD1	-	70.9/1800	PMU to CRD1 output cable	
	Communication cable	W111	CRD1	Switcher(From CRD1)	196.9/5000	CRD1 to Switch communication cable	
	Power cable	W01	PMU-UPS1 INPUT L1 L2 N G	UPS1-INPUT L1 L2 N G	94.5/2400	PMU to UPS1 input cable	
	Power cable	W03	UPS OUTPUT	PMU UPS1-Output	94.5/2400	UPS1 to PMU output cable	
	Communication cable	W112	UPS1	Switcher(From UPS1)	157.5/4000	UPS 1 to Switch communication cable	
	Communication cable	W118	NVR	Switcher(From NVR)	47.2/1200	NVR to Switch Communication Cable	
	Power cable (factory assembled)	W07	PMU-RLIGHT	PMC-RLIGHT	39.4/1000	PMU to PMC rear door LED light power cable	
0411A900	Power cable (factory assembled)	W09	PMU-FLIGHT FWH FRE FBK FBL	PMC-FLIGHT	68.9/1750	PMU to PMC front door LED light power cable	
	Power cable (factory assembled)	W11	PMU-F-SW FCOM FNC	PMC-F-SW	68.9/1750	PMU to PMC front door microswitch power cable	
	Power cable (factory assembled)	W12	PMU-R-SW	PMC-R-SW	39.4/1000	PMU to PMC rear door microswitch power cable	
	Power cable (factory assembled)	W06	PMU-LOCK DC+ DC-	PMC-LOCK	47.2/1200	PMU to PMC intelligent door lock power cable	
	Communication cable (factory assembled)	W101	PMC-FLOCK	8COM-COM1	35.4/900	PMC to RDU501_COM1 intelligent door lock front door communication cable	
	Communication cable (factory assembled)	W107	PMU-RLOCK	8COM-COM2	70.9/1800	PMC to RDU501_COM2 intelligent door lock rear door communication cable	
	Power cable (factory assembled)	W08	HMI-P	PMU-HMI DC+ DC-	70.9/1800	PMU to HMI power cable	

SHEET NO. 5 / 14	DRAWN BY: Nitesh Patil	<small>© 2020 VERTIV GROUP CORPORATION. CONFIDENTIAL AND PROPRIETARY. ALL RIGHTS RESERVED. VERTIV AND THE VERTIV LOGO ARE TRADEMARKS OR REGISTERED TRADEMARKS OF VERTIV GROUP CORPORATION. THIS DOCUMENT (AND THE INFORMATION IT CONTAINS) ARE THE PROPERTY OF VERTIV GROUP CORPORATION BY ACCEPTING IT INTO YOUR POSSESSION, YOU AGREE THAT YOU WILL KEEP THIS DOCUMENT AND ALL INFORMATION CONTAINED HEREIN IN STRICTEST CONFIDENCE AND WILL NOT COPY, REPRODUCE, TRANSMIT, USE (EXCEPT SOLELY FOR THE BENEFIT OF VERTIV GROUP CORPORATION), SELL, LEND, OR OTHERWISE DISPOSE OF SAME, DIRECTLY OR INDIRECTLY, WITHOUT THE EXPRESS WRITTEN PERMISSION OF VERTIV GROUP CORPORATION, AND THIS DOCUMENT SHALL BE RETURNED TO VERTIV GROUP CORPORATION IMMEDIATELY UPON REQUEST.</small>	 VERTIV™
CHANGE NO.	APPROVED BY: Jakub Fencel		
PAGE DESCRIPTION: 3.a- Cable overview : =vRow+13Rack1-W207 - =vRow+14PMU-W08	TITLE / DESCRIPTION: Vertiv™ SmartRow™ 2: 3x IT Rack 10kW	DWG NO. SR2N03010NAA1	REVISION: 505 N. CLEVELAND AVE WESTERVILLE OH 43081
		DATE (LATEST REV.)	

Cable overview

Packaging No.	Cable Category	Cable No.	Tag1	Tag2	Length (inch/mm)	Description
0411A900	Communication cable (factory assembled)	W102	PMU-DO2	RDU501-DO2	70.9/1800	PMU to RDU501 DO2 Control Red Light Cable
	Communication cable (factory assembled)	W104	PMU-DI	4DI-RJ451	66.9/1700	PMU to 4DI SPD communication network cable
	Communication cable (factory assembled)	W105	PMU-RS485	RDU501-COM3	70.9/1800	PMU to RDU501 COM3 meter communication network cable
	Communication cable (factory assembled)	W106	4DI-DI1	RDU501-Sensor2	11.8/300	4DI to RDU501 Smoke 2 SPD Communication Network Cable
	Communication cable (factory assembled)	W108	HMI_485-2	HMI-C	29.5/750	RDU501 COM2 to HMI communication cable
	Communication cable (factory assembled)	W109	RDU501-Sensor1	THD-RJ1	27.6/700	RDU501 to PMC cabinet THD communication cable

SHEET NO. 6 / 14	DRAWN BY: Nilesh Patil	DWC NO.: SR2N03010NAA1	 VERTIV TM
CHANGE NO.	APPROVED BY: Jakub Fencel	DATE (LATEST REV.)	REVISION: 505 N. CLEVELAND AVE WESTERVILLE OH 43081
PAGE DESCRIPTION: 3.b- Cable overview : =vRow+16PMU-W102 - =vRow+16PMU-W109		TITLE / DESCRIPTION: Vertiv™ SmartRow™ 2: 3x IT Rack 10kW	
<p>© 2020 VERTIV GROUP CORPORATION. CONFIDENTIAL AND PROPRIETARY. ALL RIGHTS RESERVED. VERTIV AND THE VERTIV LOGO ARE TRADEMARKS OR REGISTERED TRADEMARKS OF VERTIV GROUP CORPORATION. THIS DOCUMENT (AND THE INFORMATION IT CONTAINS) ARE THE PROPERTY OF VERTIV GROUP CORPORATION BY ACCEPTING IT INTO YOUR POSSESSION, YOU AGREE THAT YOU WILL KEEP THIS DOCUMENT AND ALL INFORMATION CONTAINED HEREIN IN STRICTEST CONFIDENCE AND WILL NOT COPY, REPRODUCE, TRANSMIT, USE (EXCEPT SOLELY FOR THE BENEFIT OF VERTIV GROUP CORPORATION), SELL, LEND, OR OTHERWISE DISPOSE OF SAME, DIRECTLY OR INDIRECTLY, WITHOUT THE EXPRESS WRITTEN PERMISSION OF VERTIV GROUP CORPORATION, AND THIS DOCUMENT SHALL BE RETURNED TO VERTIV GROUP CORPORATION IMMEDIATELY UPON REQUEST.</p>			



Connection cable at Assembly

SHEET NO. 7 / 14

CHANGE NO.

PAGE DESCRIPTION: 4- PDU wiring diagram

DRAWN BY: Nilesch Patil

APPROVED BY: Jakub Fend

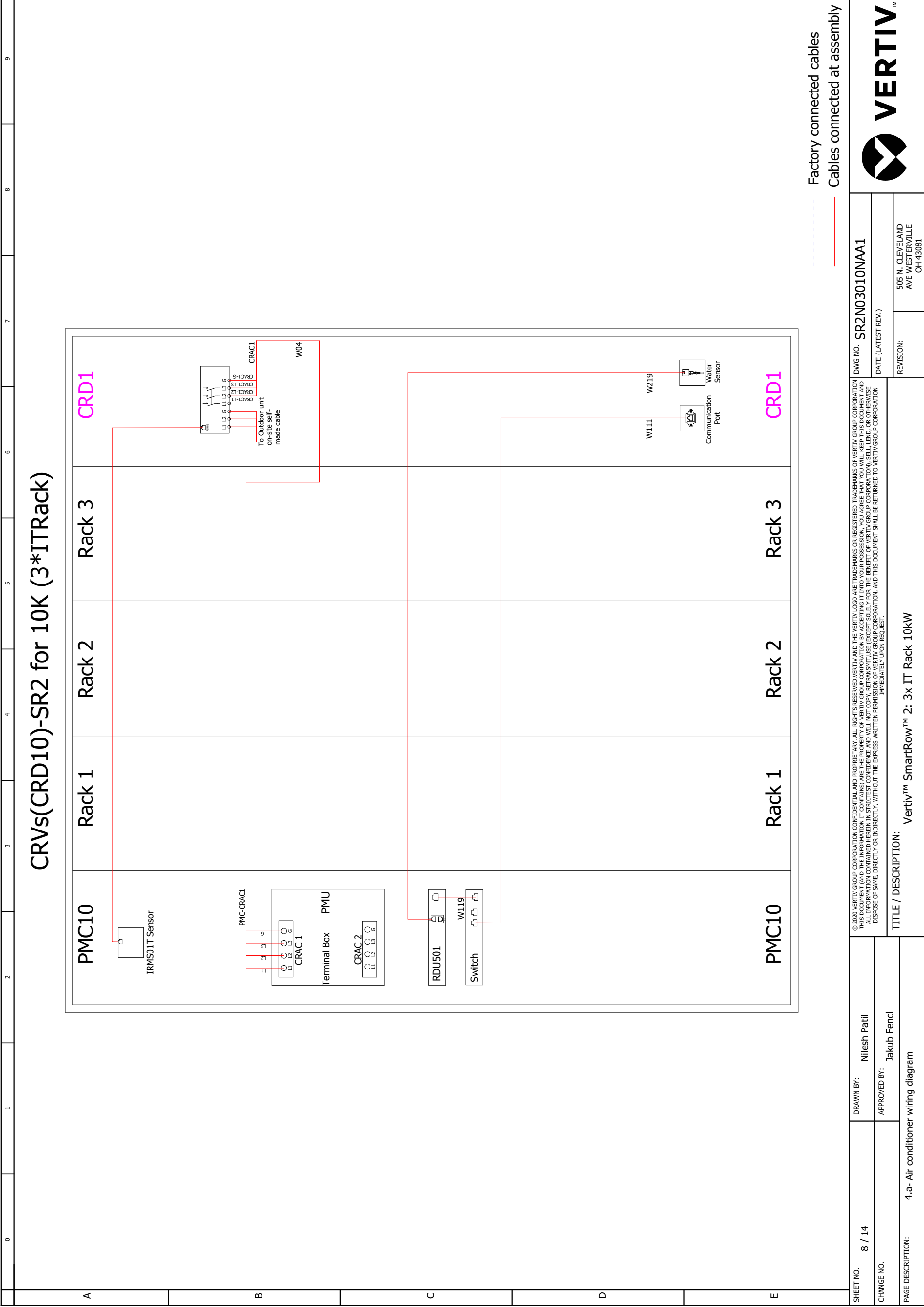
DWG NO. SR2N03010NAA1

DATE (LATEST REV.)

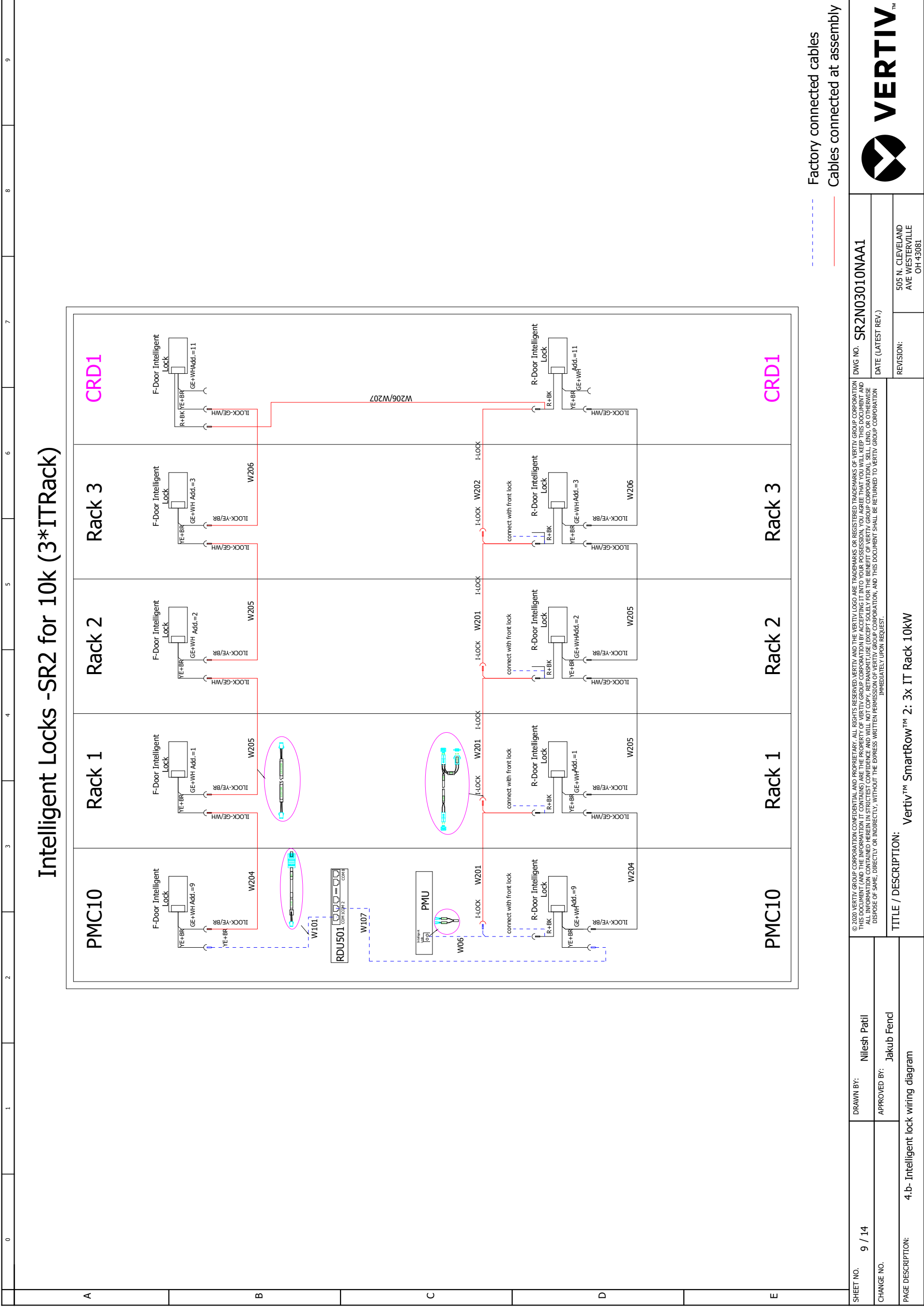
REVISION: 505 N. CLEVELAND AVE WESTERVILLE OH 43081

TITLE / DESCRIPTION: Vertiv™ SmartRow™ 2: 3x IT Rack 10kW

© 2020 VERTIV GROUP CORPORATION. CONFIDENTIAL AND PROPRIETARY. ALL RIGHTS RESERVED. VERTIV AND THE VERTIV LOGO ARE TRADEMARKS OR REGISTERED TRADEMARKS OF VERTIV GROUP CORPORATION. THIS DOCUMENT (AND THE INFORMATION IT CONTAINS) ARE THE PROPERTY OF VERTIV GROUP CORPORATION. NO PART OF THIS DOCUMENT MAY BE REPRODUCED, COPIED, OR TRANSMITTED IN ANY FORM OR BY ANY MEANS, WITHOUT THE EXPRESS WRITTEN PERMISSION OF VERTIV GROUP CORPORATION, AND THIS DOCUMENT SHALL BE RETURNED TO VERTIV GROUP CORPORATION IMMEDIATELY UPON REQUEST.

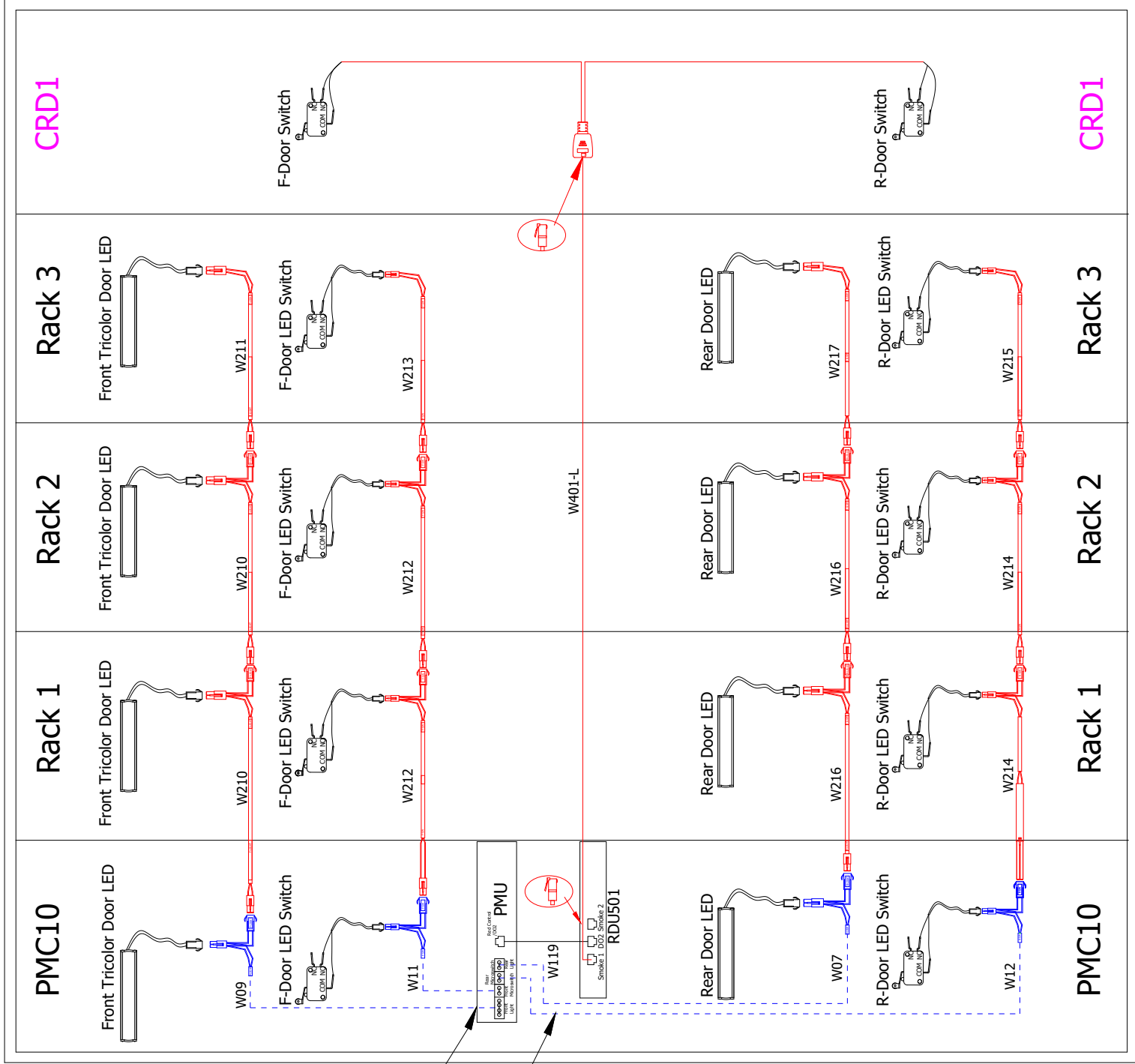


SHEET NO.	8 / 14	DRAWN BY:	Nilesh Patil	DWG NO.	SR2N03010NAA1
CHANGE NO.		APPROVED BY:	Jakub Fencel	DATE (LATEST REV.)	
PAGE DESCRIPTION:	4.a- Air conditioner wiring diagram			REVISION:	505 N. CLEVELAND AVE WESTERVILLE OH 43081



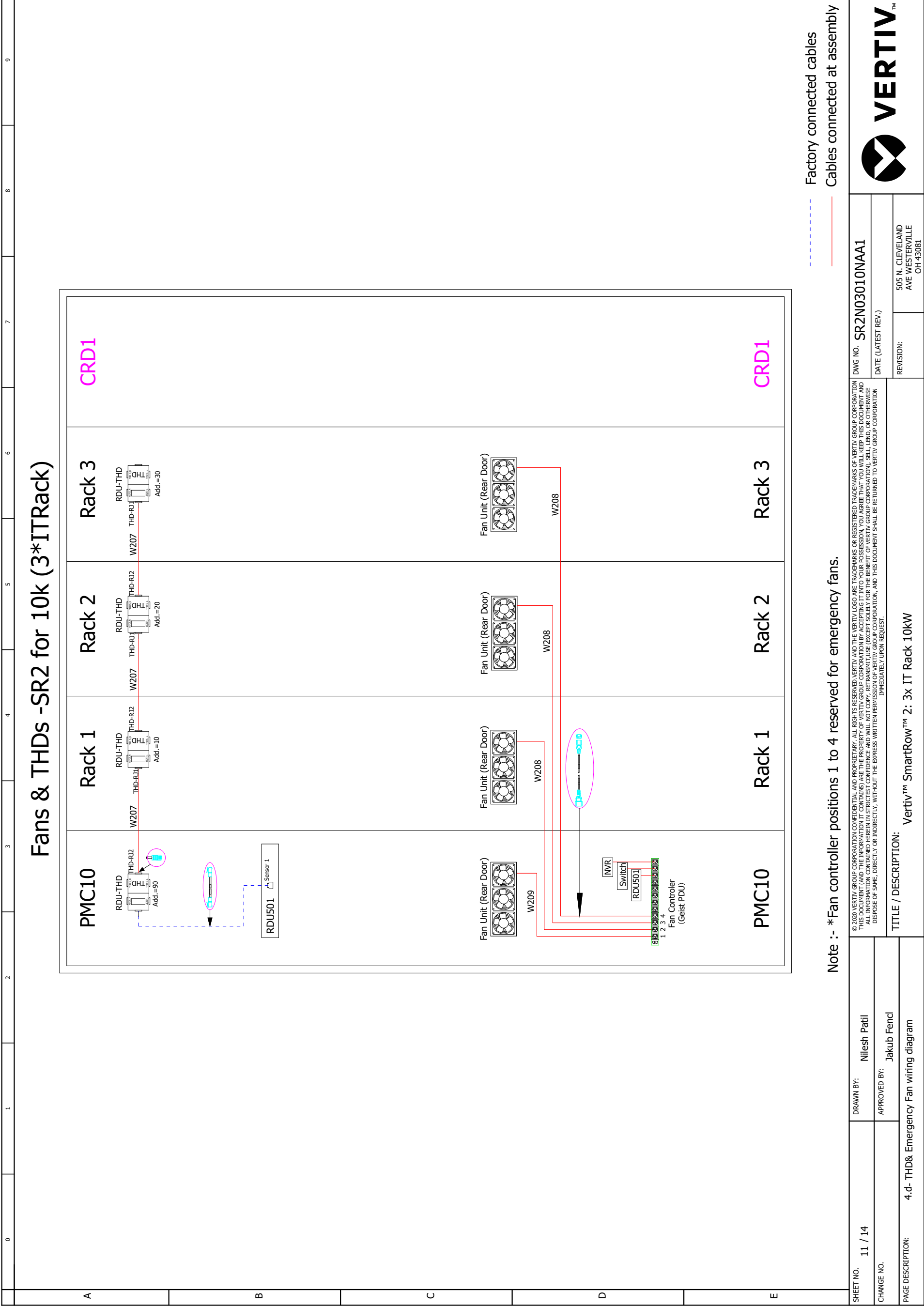
SHEET NO.	9 / 14	DRAWN BY:	Nilesh Patil	DWG NO.	SR2N03010NAA1
CHANGE NO.		APPROVED BY:	Jakub Fenc	DATE (LATEST REV.)	
PAGE DESCRIPTION:	4.b- Intelligent lock wiring diagram			REVISION:	505 N. CLEVELAND AVE WESTERVILLE OH 43081

LED & Micro Switch-SR2 for 10k (3*ITRack)



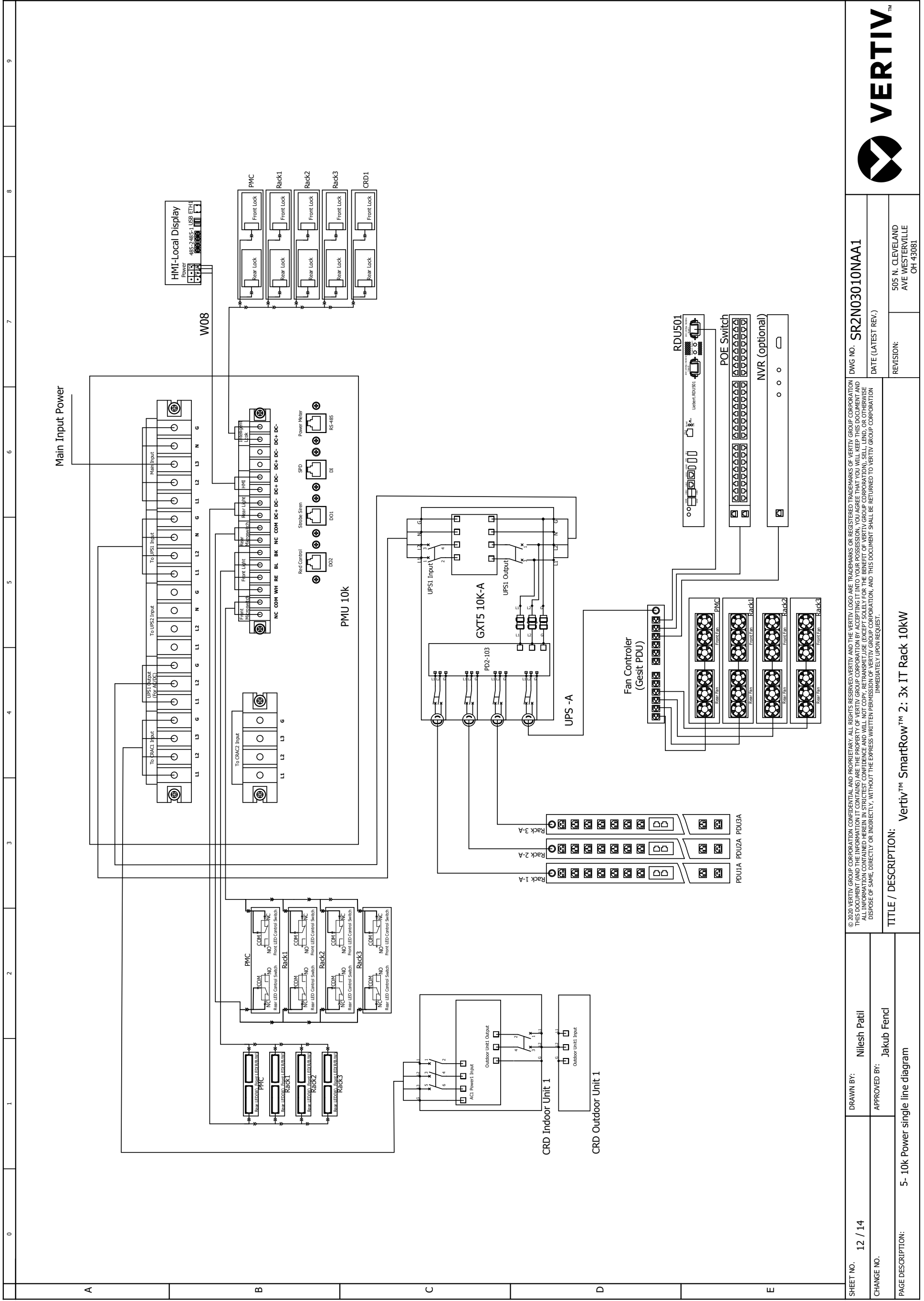
--- Factory connected cables
 --- Cables connected at assembly

SHEET NO. 10 / 14	DRAWN BY: Nilesh Patil	DWG NO. SR2N03010NAA1	
CHANGE NO.	APPROVED BY: Jakub Fencel	DATE (LATEST REV.)	
PAGE DESCRIPTION: 4.-c- LED&Micro Switch wiring diagram		REVISION: 505 N. CLEVELAND AVE WESTERVILLE OH 43081	

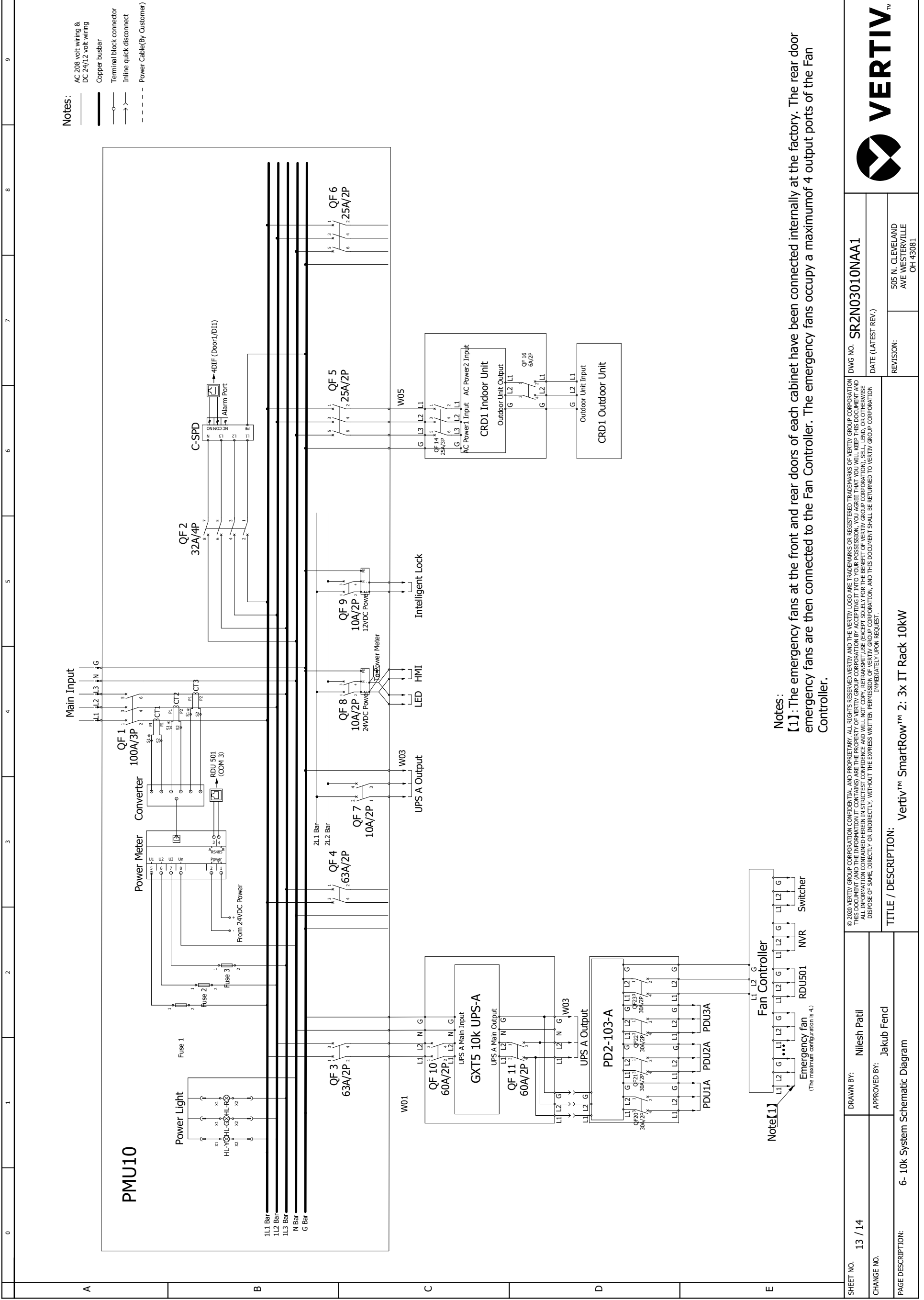


SHEET NO. 11 / 14	DRAWN BY: Nilesh Patil	DWG NO. SR2N03010NAA1	DATE (LATEST REV.)
CHANGE NO.	APPROVED BY: Jakub Fenc	REVISION:	505 N. CLEVELAND AVE WESTERVILLE OH 43081
PAGE DESCRIPTION: 4.d- THD& Emergency Fan wiring diagram	TITLE / DESCRIPTION: Vertiv™ SmartRow™ 2: 3x IT Rack 10kW		

© 2020 VERTIV GROUP CORPORATION. CONFIDENTIAL AND PROPRIETARY. ALL RIGHTS RESERVED. VERTIV AND THE VERTIV LOGO ARE TRADEMARKS OR REGISTERED TRADEMARKS OF VERTIV GROUP CORPORATION. THIS DOCUMENT AND THE INFORMATION IT CONTAINS ARE THE PROPERTY OF VERTIV GROUP CORPORATION BY ACCEPTING IT INTO YOUR POSSESSION, YOU AGREE THAT YOU WILL KEEP THIS DOCUMENT AND INFORMATION CONFIDENTIAL AND PROPRIETARY AND WILL NOT DISCLOSE IT TO ANY OTHER PARTY WITHOUT THE EXPRESS WRITTEN PERMISSION OF VERTIV GROUP CORPORATION. ANY UNAUTHORIZED DISCLOSURE OR DISPOSE OF SAME, DIRECTLY OR INDIRECTLY, WITHOUT THE EXPRESS WRITTEN PERMISSION OF VERTIV GROUP CORPORATION, AND THIS DOCUMENT SHALL BE RETURNED TO VERTIV GROUP CORPORATION IMMEDIATELY UPON REQUEST.



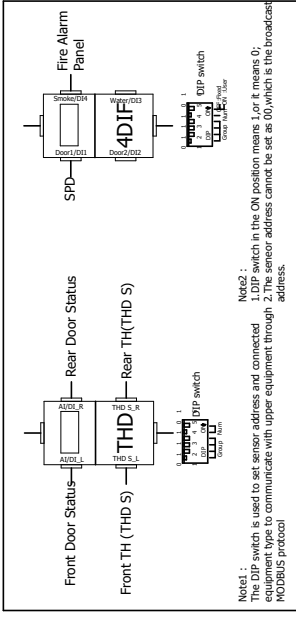
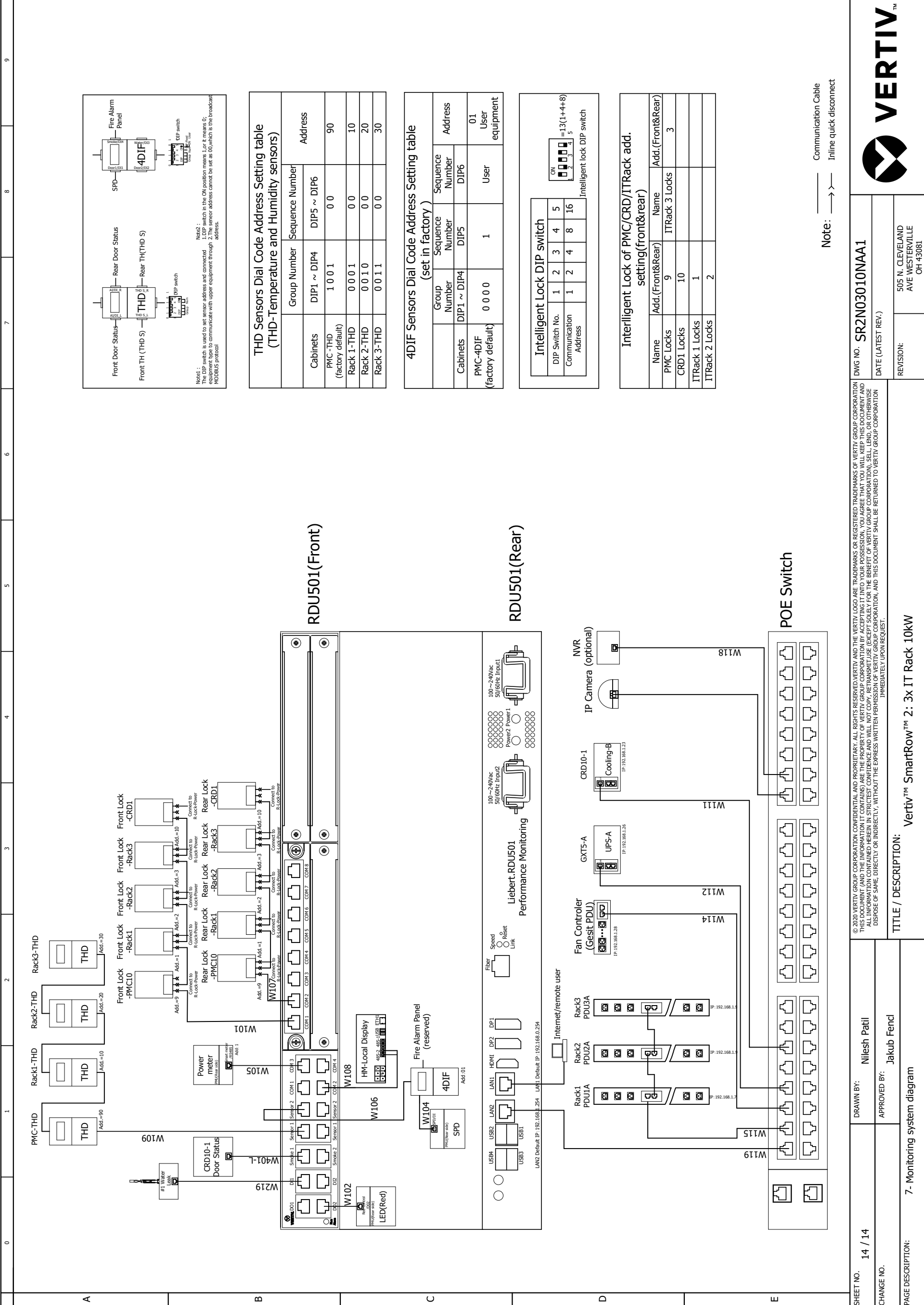
SHEET NO.	12 / 14	DRAWN BY:	Nilesh Patil	DATE:	6/10/2024
CHANGE NO.		APPROVED BY:	Jakub Fencel	REVISION:	
PAGE DESCRIPTION:	5- 10k Power single line diagram				
TITLE / DESCRIPTION:			Vertiv™ SmartRow™ 2: 3x IT Rack 10kW		
DMG NO.:			SR2N03010NAA1		
DATE (LATEST REV.)			505 N. CLEVELAND AVE WESTERVILLE OH 43081		



- Notes:**
- AC 208 volt wiring & DC 24/12 volt wiring
 - Copper busbar
 - Terminal block connector
 - Inline quick disconnect
 - Power Cable (By Customer)

Notes:
 [1]: The emergency fans at the front and rear doors of each cabinet have been connected internally at the factory. The rear door emergency fans are then connected to the Fan Controller. The emergency fans occupy a maximum of 4 output ports of the Fan Controller.

SHEET NO. 13 / 14	DRAWN BY: Nilesh Patil	DWG NO. SR2N03010NAA1	
		REVISION:	505 N. CLEVELAND AVE WESTERVILLE OH 43081
CHANGE NO.	APPROVED BY: Jakub Fencel	DATE (LATEST REV.)	
PAGE DESCRIPTION: 6- 10k System Schematic Diagram	TITLE / DESCRIPTION: Vertiv™ SmartRow™ 2: 3x IT Rack 10kW		
<small>© 2020 VERTIV GROUP CORPORATION CONFIDENTIAL AND PROPRIETARY. ALL RIGHTS RESERVED. VERTIV AND THE VERTIV LOGO ARE TRADEMARKS OR REGISTERED TRADEMARKS OF VERTIV GROUP CORPORATION THIS DOCUMENT (AND THE INFORMATION IT CONTAINS) ARE THE PROPERTY OF VERTIV GROUP CORPORATION BY ACCEPTING IT INTO YOUR POSSESSION, YOU AGREE THAT YOU WILL KEEP THIS DOCUMENT AND ALL INFORMATION CONTAINED HEREIN IN STRICTEST CONFIDENCE AND WILL NOT COPY, REPRODUCE, TRANSMIT, USE (EXCEPT SOLELY FOR THE BENEFIT OF VERTIV GROUP CORPORATION), SELL, LEND, OR OTHERWISE DISPOSE OF SAME, DIRECTLY OR INDIRECTLY, WITHOUT THE EXPRESS WRITTEN PERMISSION OF VERTIV GROUP CORPORATION, AND THIS DOCUMENT SHALL BE RETURNED TO VERTIV GROUP CORPORATION IMMEDIATELY UPON REQUEST.</small>			

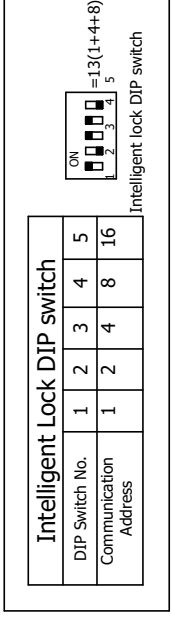


THD Sensors Dial Code Address Setting table (THD-Temperature and Humidity sensors)

Cabinets	Group Number	Sequence Number	Address
PMC -THD (factory default)	DIP1 ~ DIP4	DIP5 ~ DIP6	
Rack 1-THD	1 0 0 1	0 0	90
Rack 2-THD	0 0 0 1	0 0	10
Rack 3-THD	0 0 1 0	0 0	20
	0 0 1 1	0 0	30

4DJF Sensors Dial Code Address Setting table (set in factory)

Cabinets	Group Number	Sequence Number	Address
PMC-4DJF (factory default)	DIP1 ~ DIP4	DIP5	DIP6
	0 0 0 0	1	User equipment
			01



Interelligent Lock of PMC/CRD/IT/Rack add. setting(front&rear)

Name	Addr.(Front&Rear)	Name	Addr.(Front&Rear)
PMC Locks	9	ITRack 3 Locks	3
CRD1 Locks	10		
ITRack 1 Locks	1		
ITRack 2 Locks	2		

Note: ——— Communication Cable
 ———> Inline quick disconnect

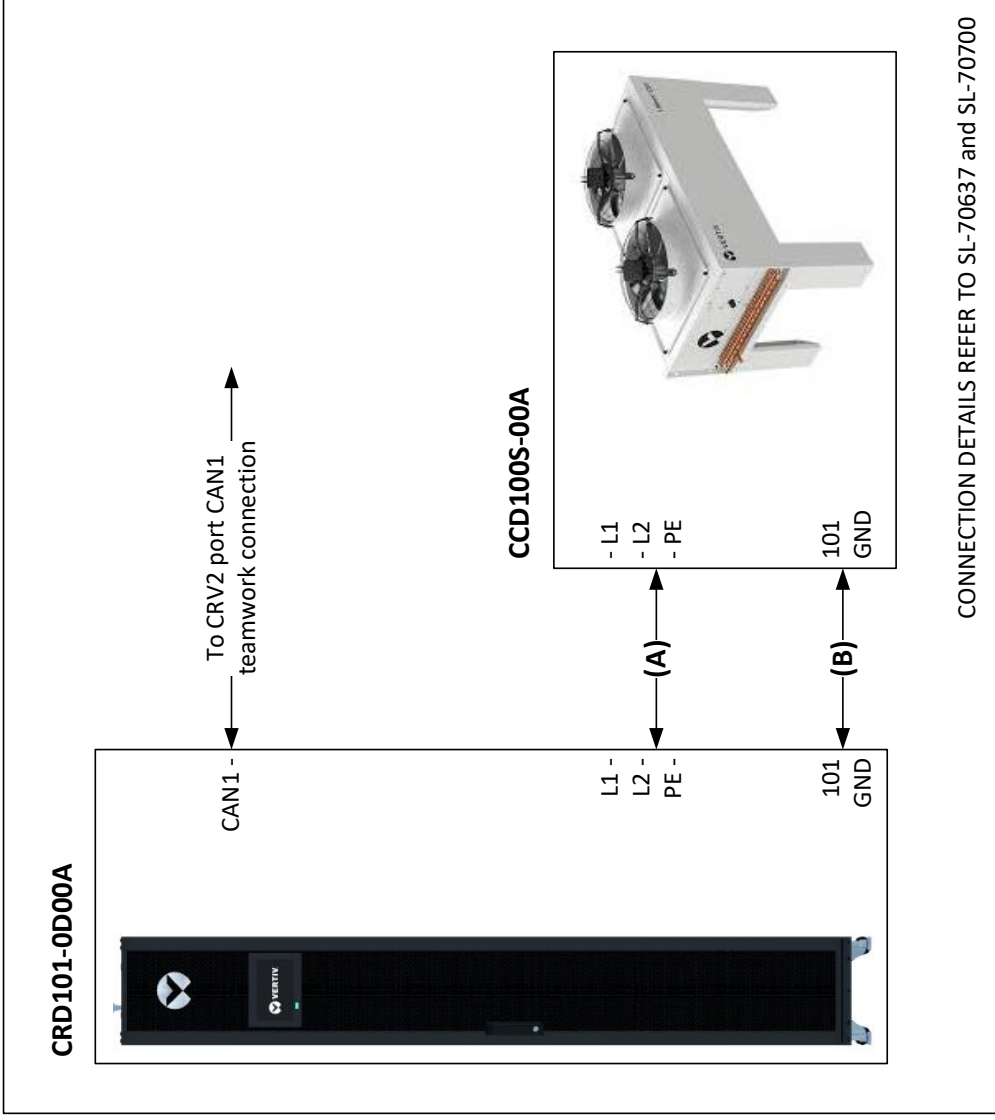


SHEET NO. 14 / 14
 CHANGE NO.
 PAGE DESCRIPTION: 7- Monitoring system diagram

DRAWN BY: Nilesh Patil
 APPROVED BY: Jakub Fencel

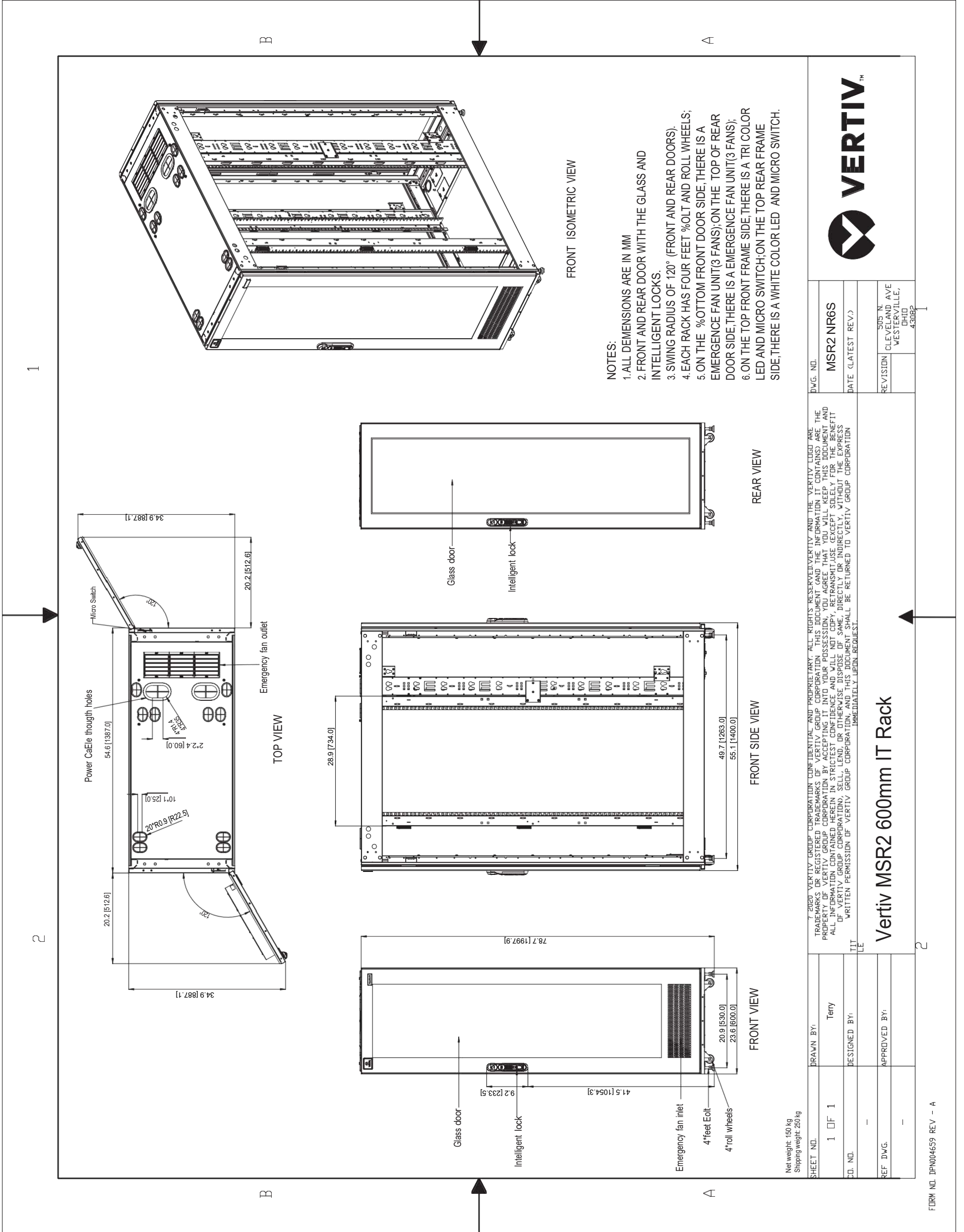
TITLE / DESCRIPTION: Vertiv™ SmartRow™ 2: 3x IT Rack 10kW

DWG NO. SR2N03010NAA1
 DATE (LATEST REV.)
 REVISION: 505 N. CLEVELAND AVE WESTERVILLE OH 43081

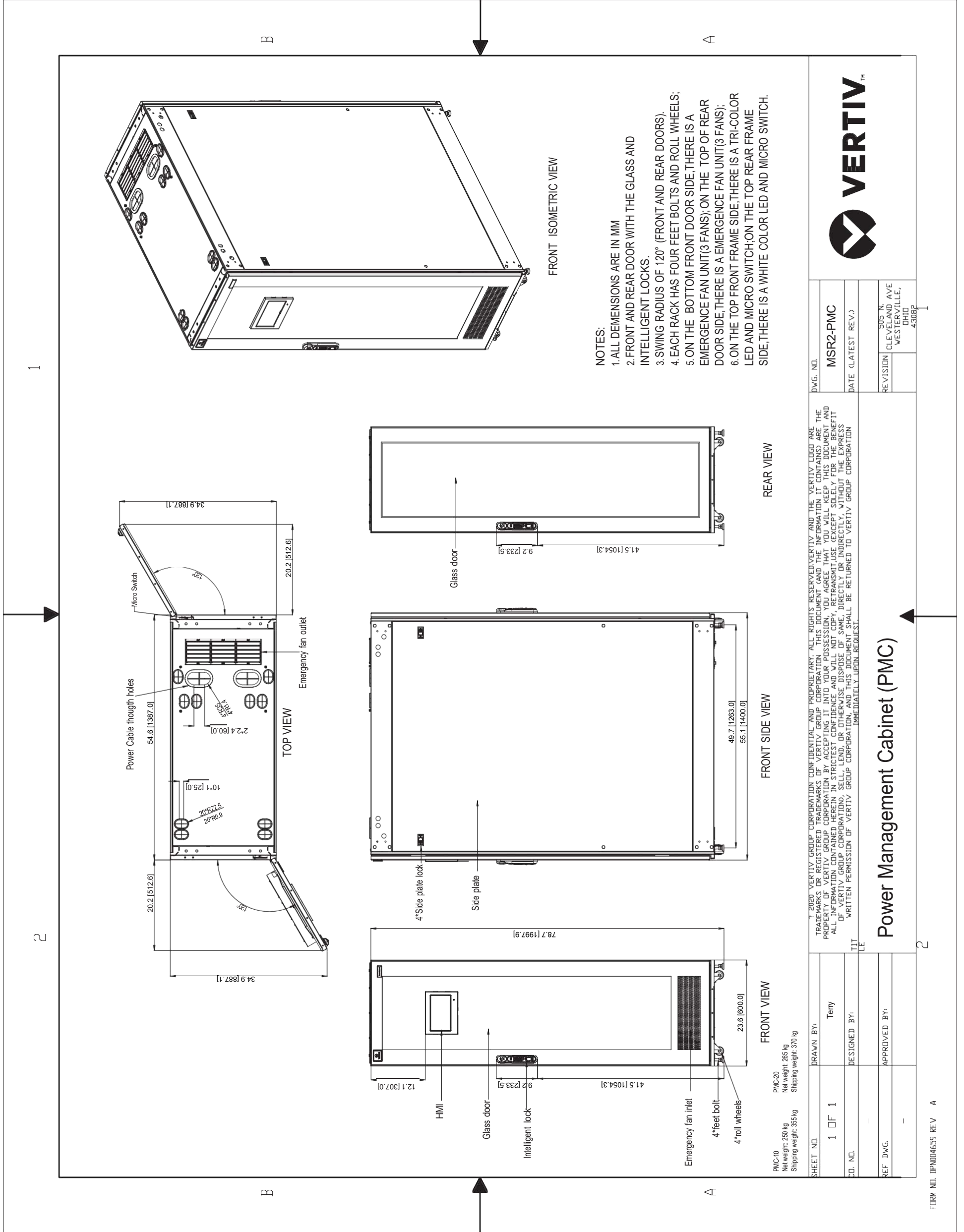
4. Field Supplied Cable & Part List

0	1	2	3	4	5	6	7	8	9
A	FIELD SUPPLIED CABLE & PART LIST								
	PART	DETAILS							
	CONDENSER POWER SUPPLY CABLE (A)	2 conductors + PE, 16AWG or greater							
	FAN SPEED CONTROL (B)	2 conductors, 22AWG or greater							
	CONDENSATE PUMP TUBE	NPT 1/2 in. Female copper threaded joint for the tube connection							
B	 <p style="text-align: center;">CONNECTION DETAILS REFER TO SL-70637 and SL-70700</p>								
C									
D									
E	<p>© 2020 VERTIV GROUP CORPORATION. CONFIDENTIAL AND PROPRIETARY. ALL RIGHTS RESERVED. VERTIV AND THE VERTIV LOGO ARE TRADEMARKS OR REGISTERED TRADEMARKS OF VERTIV GROUP CORPORATION. THIS DOCUMENT (AND THE INFORMATION IT CONTAINS) ARE THE PROPERTY OF VERTIV GROUP CORPORATION BY ACCEPTING IT INTO YOUR POSSESSION, YOU AGREE THAT YOU WILL KEEP THIS DOCUMENT AND ALL INFORMATION CONTAINED HEREIN IN STRICTEST CONFIDENCE AND WILL NOT COPY, REPRODUCE, RETRANSMIT, USE (EXCEPT SOLELY FOR THE BENEFIT OF VERTIV GROUP CORPORATION), SELL, LEND, OR OTHERWISE DISPOSE OF SAME, DIRECTLY OR INDIRECTLY, WITHOUT THE EXPRESS WRITTEN PERMISSION OF VERTIV GROUP CORPORATION, AND THIS DOCUMENT SHALL BE RETURNED TO VERTIV GROUP CORPORATION IMMEDIATELY UPON REQUEST.</p> <p>FIELD SUPPLIED CABLE & PART LIST</p>								
SHEET NO. 1 / 1		DRAWN BY: Petr Harant		DWG NO.		DATE (LATEST REV.) 30.05.2024			
CHANGE NO.		APPROVED BY: Tomáš Krech		REVISION:		505 N. CLEVELAND AVE. WESTERVILLE OH 43081			
PAGE DESCRIPTION:									

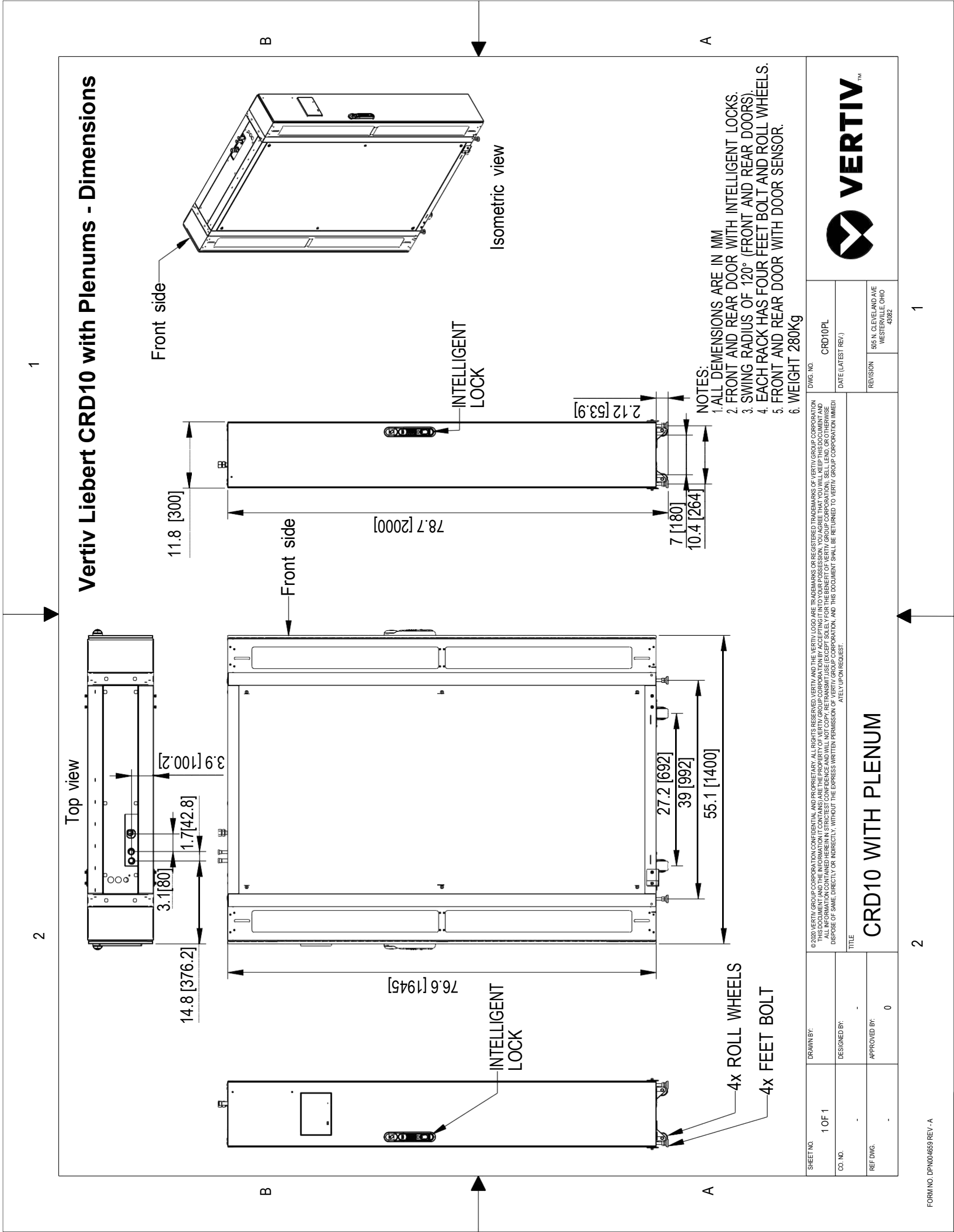
5. Vertiv MSR2 600mm IT Rack



6. Vertiv MSR2 Power Management Cabinet (PMC)



7. Vertiv Liebert CRD10 with Plenums



8. Power Management Unit - 10kW (PMU10)

FRONT VIEW

REAR VIEW
(PMU COVER REMOVED)

FRONT ISOMETRIC VIEW

NO.	NAME	Qty	REMARK
20	GROUND SCREWS	1	
19	POWER METER RS485(RJ45)	1	
18	SPD DI(RJ45)	1	
17	STOBE SIREN CONTROL DO1(RJ45)	1	
16	RED CONTROL DO2(RJ45)	1	
15	DC POWER TERMINAL BLOCKS	1	
14	TO CRV2 POWER TERMINAL BLOCKS	1	
13	POWER TERMINAL BLOCKS	1	
12	24VDC BREAKER	1	
11	12VDC BREAKER	1	
10	ACDC BREAKER	1	
9	CRV2 BREAKER	1	
8	CRV1 BREAKER	1	
7	MAIN INPUT BREAKER	1	
6	JPS2 INPUT BREAKER	1	
5	JPS1 INPUT BREAKER	1	
4	BOATLIKE SWITCH FOR BLUE LIGHT	1	
3	SPD	1	
2	SPD BREAKER	1	
1	POWER LIGHT(L1/L2/L3)	3	

NOTES:
 PMU10 is used in Power Redundancy and No Power Redundancy PMC
 Net weight: 36 kg

SHEET NO. 1 OF 2

DD. NO. -

REF. DWG. -

DRAWN BY: Terry

DESIGNED BY: -

APPROVED BY: -

DWG. NO. PMU10

DATE (LATEST REV.) -

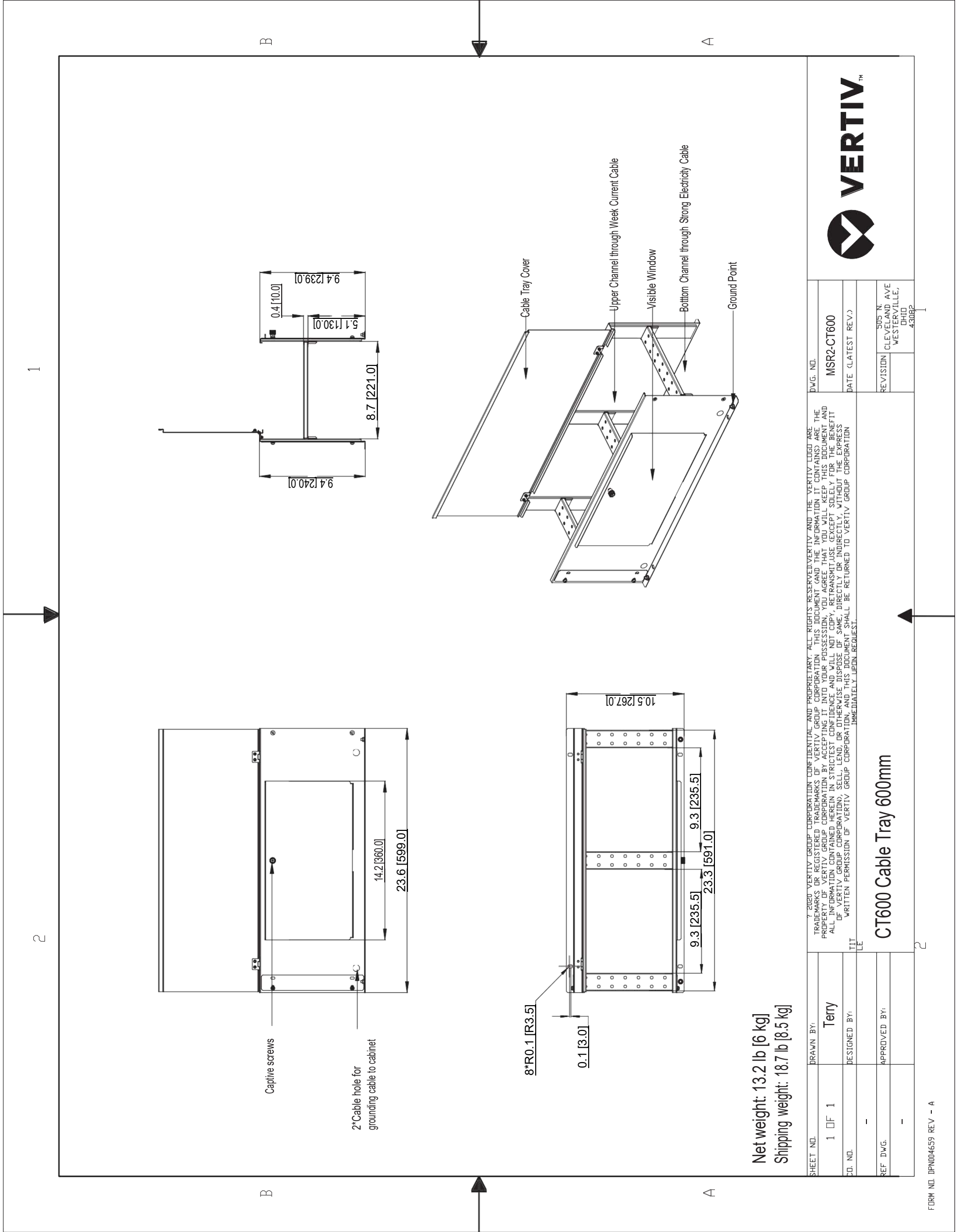
REVISION 505 N. CLEVELAND AVE. WESTERVILLE, OHIO 43082

Power Management Unit - 10kW (PMU10)

FORM NO. DPN004659 REV - A

2

10. Vertiv MSR2 - CT600 Cable Tray 600mm



SHEET NO. 1 OF 1		DRAWN BY: Terry		D.W.G. NO. MSR2-CT600		DATE (LATEST REV.)	
DESIGNED BY:		APPROVED BY:		REVISION		305 N. CLEVELAND AVE. WESTERVILLE, OHIO 43082	
<p>© 2020 VERTIV GROUP CORPORATION CONFIDENTIAL AND PROPRIETARY. ALL RIGHTS RESERVED. VERTIV AND THE VERTIV LOGO ARE TRADEMARKS OR REGISTERED TRADEMARKS OF VERTIV GROUP CORPORATION. THIS DOCUMENT (AND THE INFORMATION IT CONTAINS) ARE THE PROPERTY OF VERTIV GROUP CORPORATION BY ACCEPTING IT INTO YOUR POSSESSION, YOU AGREE THAT YOU WILL KEEP THIS DOCUMENT AND INFORMATION CONFIDENTIAL AND NOT DISCLOSE, REPRODUCE, COPIY, OR OTHERWISE DISPOSE OF SAME, DIRECTLY OR INDIRECTLY, WITHOUT THE EXPRESS WRITTEN PERMISSION OF VERTIV GROUP CORPORATION. AND THIS DOCUMENT SHALL BE RETURNED TO VERTIV GROUP CORPORATION IMMEDIATELY UPON REQUEST.</p>				<p>CT600 Cable Tray 600mm</p>			

11. Scope of Work

SmartRow2 Assembly

SERVICE SUMMARY

Feature	Detail
On-Site Service	Site trip(s) within the 48 contiguous states. Visit(s) to be scheduled by the customer between 7 am-5 pm, Monday-Friday (excluding weekends & national holidays).
Customer Support	Includes access to the Customer Resolution Center (1-800-543-2378) and the Vertiv Customer Services Network Online Internet portal for extent of product warranty.
Consolidation	The SmartRow2 includes numerous shippable units (typically pallets or boxes) that originate from multiple factories and suppliers. Vertiv consolidates these items into a single customer shipment and reduces the likelihood of shippable units being lost at the customer site. This benefits the customer by relieving the burden of keeping track of multiple partial shipments.
Inside Delivery	Vertiv Service will move the shippable units from the delivery truck to the Staging Area. Vertiv Services will unpackage the shippable units and remove/dispose of the packaging material so that it is ready for assembly. Vertiv will verify that all material on the sales order has been received.
Project Management	Included with Consolidation and Inside Delivery. Vertiv will assign a project manager for the project. The Project Manager will supervise the Consolidation and Inside Delivery Process and communicate hardware shipment schedules with the customer.
Assembly	SmartRow2 is assembled onsite by Vertiv factory-trained and authorized technicians equipped with Vertiv Proprietary tools and software. Vertiv CEs and Vertiv Partners are the only approved OEM service providers for Vertiv products. These technicians are supervised by a Site Manager who also gathers site-specific requirements like safety and work procedures
Factory Startup	Warranty inspection and startup validates the warranty and initializes the warranty coverage period

SERVICE PERFORMED

Consolidated Shipment

Shippable units may be available at time of order or built-to-order with a lead time. Vertiv safely stores these items in-warehouse until the customer is ready to receive the SmartRow2 in a single shipment

Inside Delivery

Vertiv Services will deliver the shippable units from the delivery truck to the Staging Area. Vertiv Services will unpackage the shippable units and remove/dispose of the packaging material so that it is ready for assembly. Vertiv will verify that all material has been received.

Change order option:

- There must be an appropriate loading dock with continuous, level floor from the dock to the staging area. If the shippable units must be moved up/down stairs, the customer must provide a suitable elevator, or charges for special rigging will be incurred. If the customer does not have an appropriate loading dock, nominal charges may/may-not apply for a lift-truck delivery.

Project Management

Vertiv will assign a project manager and a site manager for the project.

The Project Manager will supervise the Consolidation and Inside Delivery Process and communicate schedules with the customer. The Site Manager will supervise the assembly, startup, warranty inspection and turn over the

Site-Specific Requirements

All personnel will be available for up to two hours per week for Site Access, Safety Training and other site-specific requirements Change Order Option:

- Vertiv can quote a price for additional man-hours if 2 hours per week is insufficient

Assembly

There shall be continuous, level floor between the Staging Area and the Installation Location so that heavy items can be moved via casters/pallet jacks.

Change Order Option:

- If there is not continuous level floor, the customer must provide or pay for any necessary lift/rigging equipment.

Project Management

Vertiv PMC, including RDU501 SmartRow2 Controller/Display

Vertiv will position, level, and bay together the PMC as described in the submittal documents.

The customer is responsible for providing primary electrical power to the PMC.

Vertiv will program and configure the SmartRow2 RDU501 controller/display. This includes setting IP addresses so that the customer can monitor the system status remotely

Change Order Option:

- Vertiv will quote IP addressing of equipment on the customer network, but this would be done by other personnel and scheduled separately. This is outside the scope of SmartRow2 assembly.

Vertiv IT Rack(s)

Vertiv will position, level, and bay together the Vertiv IT Racks as described in the submittal documents. Vertiv will not populate racks with customer IT gear, including blanking panels, servers, shelves, etc.

The customer must define addressing conventions (1,2,3,4, right-to-left or left-to-right) prior to start of work.

Cable Trays

Vertiv will install the SmartRow2 cable trays that are included with the SmartRow2 solution as described in the submittal documents

Liebert®CRV's, Temperature Sensors, Modbus cables, and associated Plenums

Vertiv will position and level the Liebert® CRV and attach the associated plenums to provide cooling to the SmartRow2.

Vertiv will connect the necessary temperature sensors.

The customer is responsible for piping and primary power to the CRV along with connecting CANBus cable between the CRV and heat rejection. All specific requirements (such as piping traps and proper electrical grounding) for correct product installation are detailed in the product installation manual.

After the SmartRow2 is assembled and the Liebert® CRV is piped and powered by the customer in accordance with the product installation manual, Vertiv will perform a factory warranty inspection along with the rest of the SmartRow2

Liebert®MC / CCD Condensers for Liebert®CRV's

The customer is responsible for installing the associated heat rejection. This includes primary power, CANBus communication wire, piping, refrigerant charging, and all other tasks in the Installation Manual. Any/all penetration points in the walls/ceilings/floors for any wiring or piping are also the customer's responsibility.

Rack PDUs

Vertiv will install and connect all rack PDUs (if applicable) including GXT5 power extensions (if applicable) as described in the submittal documents

Liebert®GXT5 Single Phase UPS's

Vertiv will install and connect all Liebert® GXT5 UPS's and connect power within the PMC cabinet and output to the PDUs as described in the submittal documents.

Additionally, Vertiv will install ancillary equipment such as Maintenance bypass and PD2-103 cabling and connectors if not already preinstalled.

After the SmartRow2 is assembled and Primary Power to the SmartRow2 is provided by the customer, Vertiv will perform factory startup of all GXT5 equipment along with the rest of the SmartRow2

Switch

Vertiv will install and connect the switch within the PMC cabinet. as described in the submittal documents

Firmware Updates

Vertiv will update firmware of any/all units to the current revision level. Shippable units are sourced globally and firmware evolves as products may be in stock with prior revisions

Wiring

Vertiv will run all necessary wiring for power and communication between cabinets as part of assembly. This includes setting IP/DIP switch settings for proper communication between the device and the PMC

Accessories

The SmartRow2 is available with lights, door locks/sensors, temperature sensors that Vertiv will connect and install.

Services associated with cameras are sold separately and out-of-scope for the SmartRow2 Assembly

RDU Monitor SmartRow2 mobile application

Services associated with the RDU Monitor SmartRow2 mobile applications are quoted separately and out-of-scope for SmartRow2 assembly

ASSUMPTIONS AND CLARIFICATIONS

- Vertiv start-up validates product warranty.
- Defects or damage resulting from installation not performed by Vertiv are not covered.
- Parts and Labor coverage is in accordance with Product Warranty. If a modified warranty is purchased, terms default to that specific package.
- Any customer site visit is limited to eight (8) hours per visit. Any time beyond forty (40) hours/wk or eight (8) hrs/day or additional Startup visits will be billed separately.
- Expenses incurred due to delays that are beyond the control of Vertiv may be billed at cost.
- Startup visit must be scheduled confirmation of proper installation (if Vertiv not involved with installation).
- This pricing excludes any load bank testing. This can also be quoted separately if required.
- Pricing excludes activities associated with 3rd party commissioning
- Pricing excludes any type of circuit breaker NEMA testing. This can also be quoted separately if required.
- Customer/Installing contractor is responsible for providing elevated access as necessary.
- Any additional requests beyond the scope of this document will be billed separately by Vertiv.
- Vertiv will not perform physical changes to the site building (such as drilling holes, etc.)

CUSTOMER RESPONSIBILITIES

In order to provide timely, accurate and thorough execution of the services described herein, Vertiv requests the following:

- Point of Contact: Provide an authorized point of contact(s), specific for the scope of work, for scheduling and coordination purposes.
- Scheduling: Make dates available for scheduling service. All visits must be requested 4 weeks in advance for assembly and 10 days for startup/warranty-inspection of need by contacting the Vertiv Project Manager. Site must be available for 5 consecutive business days. Customer may choose to pay for premium time if weekend work is necessary.
- Site Access: Prior to time of scheduled work, provide site access including any customer required escort, security clearance, safety training and badging for Vertiv personnel.
- Equipment Access: Convenient access to the equipment covered by the Scope of Work. Prior to scheduled time of work, notify Vertiv personnel of any special requirements for equipment access including lifts, ladders, etc.
- Shutdown: Service may require shutdown of load to ensure electrical connection integrity.
- Notification: If for any reason the work cannot be performed during scheduled time, notify Vertiv personnel 24-hours prior to scheduled event.
- Provide Method of Procedure (MOP) requirements/ templates, and required review period(s)

TERMS AND CONDITIONS

Subject to all Terms & Conditions as noted in the Vertiv Terms & Conditions or the terms of a Master Agreement between the parties, if any, shall apply.



SmartRow 2 Scope of Work Checklist

Customer Name: _____

Project Name: _____

Project Number: _____

This document is to serve as a checklist to help identify and budget the various work activities involved with assembling and installing a SmartRow 2. It is the customers responsibility to ensure all tasks are assigned to partners which will result in a successful SmartRow 2 project.

Contact Vertiv for available local support resources to provide technical guidance as needed. Call 800 543-2378

The **X** indicates the responsible party for that task. Multiple **X**'s indicate shared responsibility.

This document is provided as a reference document and does not replace any product manuals or supporting documentation. Always read all product documentation before performing any work.

Customer (Name) *includes responsibility for Mechanical, Electrical, and/or General Contractors as needed* : _____

Project Management: _____

Assembly Team Lead: _____

Consolidator: _____

Vertiv Warranty Inspection Tech: _____

Vertiv Sales Rep (LVO): _____

