

Vertiv PowerNexus is a new step in powering data centers and other critical applications. Close coupled system saves space, installation and commissioning time.

Vertiv PowerNexus power system combines the robust power of Vertiv™ Trinegy™ and Vertiv™ Power Switchgear integrated in one single block connected by internal busbars. Such integration reduces equipment footprint, cabling materials, and installation labor costs.

The compactness of the Vertiv PowerNexus solution enables data center industries to expedite IT deployment; specifically targeting hyperscale and colocation clients who are deploying power modules and power skids.

This not only aligns with their customers' needs but also optimizes space, maximizing the capacity for income-generating IT equipment.

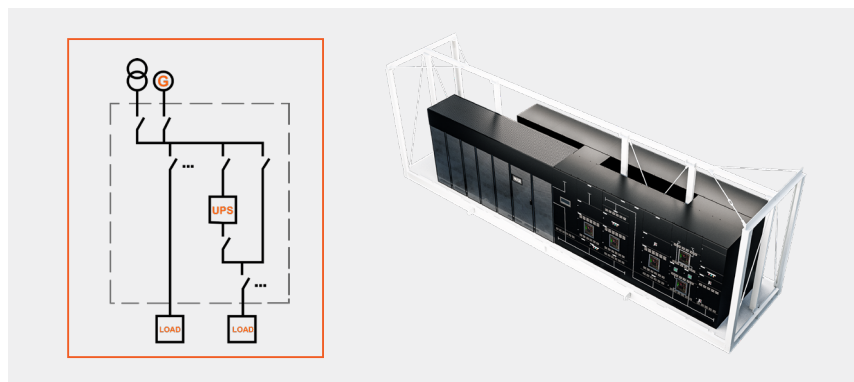
System can be pre-commissioned in the factory and delivered to the work site fully operational. Integrated EPMS (Energy & Power Monitoring System) is a standard feature.

There are three possible options:

1. **On work site integration** - Products designed for interconnection electrically, mechanically and digitally connected.
2. **On skid integration** - Products optimally arranged on a skid electrically, mechanically and digitally connected.
3. **In enclosure integration** - Products pre-integrated in an enclosure, electrically, mechanically and digitally connected.

Key features of Vertiv™ PowerNexus

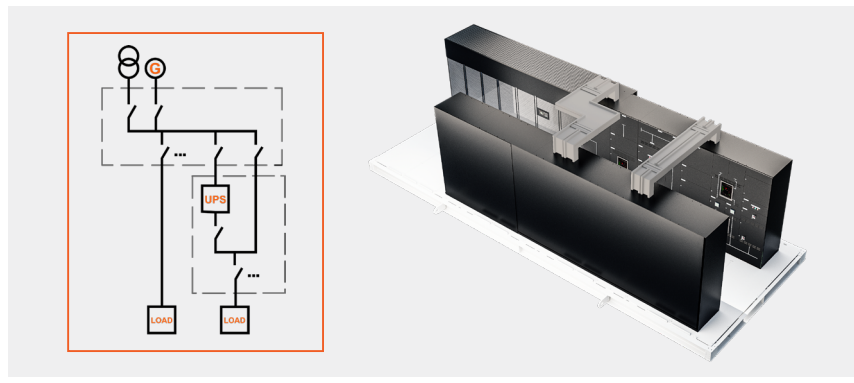
- UPS with capacity up to 2500 kVA
- UPS power range: 1500, 2000, 2500 kVA
- Switchgear with up to 5000A total load
- Two power inputs
- Direct and protected (UPS) outputs
- Integrated EPMS (optional)
- Robust, modular, and highly efficient UPS
- Safe and reliable power distribution technology
- Easy configurable single compact system
- No long run cables needed
- Predictive maintenance and distributed energy resources ready



Back-to-back arrangement

In addition, there are two possible arrangements:

- **Back-to-back:** This is most efficient arrangement. There is no need for any external connection. This is suitable for on work site integration and on skid integration.



Front-to-front arrangement

- **Front-to-front:** In this arrangement switchgear input section is connected to UPS and switchgear output section by busbars. This is suitable for on work site integration, on skid integration and in enclosure integration.










Technical Specifications

Vertiv™ PowerNexus			
Rating [kVA]	1500	2000	2500
Inputs	2 (grid and generator)		
Operating temperature	Up to 35°C @ 100% load		
Relative humidity @ 20 °C (non condensing)	Up to 95%		
Frame colour (RAL scale)	RAL7021		
IP protection	IP20 for UPS, IP31 for SWB		
Integration	Assembly on site or preassembled on skid or inclosure in factory		
Grounding	TN-C or TN-S		
Certification	CE and UL	CE and UL	UL
Nominal voltage [V]	380, 400, 480		
input breaker [A]	3200	4000	5000
Short circuit rating	100 kA/1s		
UPS			
Core rating [kVA]	500		
Inverter Overload Capacity	110% continuous, 125% for 10 mins, 150% for 1 min		
Input factor	≥0.99		
UPS modes	Online (VFI), Dynamic Online (VI), ECO Mode (VFD)		
UPS efficiency @ VFI mode	≥97%		
UPS efficiency @ VFD mode	≥99%		
Frequency range [Hz]	40 - 70		
UPS serviceability	Complete UPS isolation by using external bypass		
Battery voltage range [V]	397 - 700		

Vertiv™ Trinergy™ UPS is the next-gen UPS built on a history of exceeding Tier IV data center power chain availability and over 40 years of technical innovation and global field-proven experience.

Vertiv™ Trinergy™ Overview and Benefits At a Glance

Elevating performance, modularity, resilience, reliability and efficiency for your power needs

-  **Vertiv's most reliable, resilient and efficient UPS** in it's product class
-  **Best-in-class modular UPS** for maximum flexibility from room to pre-fabricated deployment
-  **Skid-mount and containerized power solutions** for an easy deployment
-  **More power in a single block**, compared to existing products, to support high density applications, as Artificial Intelligence
-  **Ready to integrate different energy and back up power sources**, including lithium-ion and nickel-zinc
-  **Rich digital experience** and advanced monitoring with Vertiv™ LIFE™ Services
-  **The ultimate optimized high-power solution** for global standards and easy installation
-  Designed, manufactured, tested and available **across the globe**
-  **Hot and easy serviceability** for no interruption, even during maintenance or power upgrades

Vertiv.com

© 2024 Vertiv Group Corp. All rights reserved. Vertiv™ and the Vertiv logo are trademarks or registered trademarks of Vertiv Group Corp. All other names and logos referred to are trade names, trademarks or registered trademarks of their respective owners. While every precaution has been taken to ensure accuracy and completeness here, Vertiv Group Corp. assumes no responsibility, and disclaims all liability, for damages resulting from use of this information or for any errors or omissions. Specifications, rebates and other promotional offers are subject to change at Vertiv's sole discretion upon notice.