

Vertiv™ PowerNexus is a new step in powering data centers and other critical applications. Close-coupled UPS and Switchgear systems optimize space, installation and commissioning time.

The compact Vertiv™ PowerNexus power system combines the robust power of Vertiv™ Trinergy™ and Vertiv™ PowerBoard Switchgear integrated in one single block connected by internal busbars. Such integration reduces equipment footprint, cabling materials, and installation labor costs.

The compact Vertiv™ PowerNexus solution enables data center industries to expedite IT deployment; specifically enabling hyperscale and colocation clients deploying power modules and power skids.

Vertiv™ PowerNexus provides a dedicated solution to datacenter owners most important priorities: Simplicity of installation, and space optimization for income generating IT equipment.

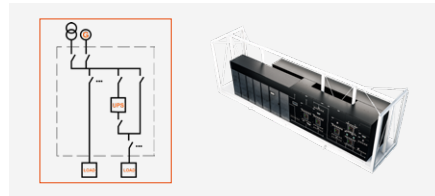
Vertiv™ PowerNexus can be pre-commissioned in the factory and delivered to the work-site fully operational and pre-tested. Integrated EPMS (Energy & Power Monitoring System) is a standard feature providing active controls and monitoring to provide reliable power quality for maximum uptime.

There are three possible options:

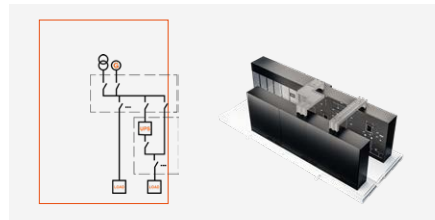
- 1. Work-site integration** - Products designed for interconnection electrically, mechanically and digitally connected.
- 2. Skid integration** - Products optimally arranged on a skid electrically, mechanically and digitally connected.
- 3. Enclosure integration** - Products pre-fabricated in an enclosure, electrically, mechanically and digitally connected.

In addition, there are two possible arrangements:

Back-to-Back: No external connections between UPS and Switchgear required. Suitable for work-site and skid integration deployments.



Front-to-Front: Optimized Switchgear and UPS connections by busbar. Suitable for any deployment method (Work-Site, Skid, Enclosure)



Intelligent onboard monitoring & control

Vertiv™ PowerNexus comes standard with an advanced onboard monitoring and control platform designed to streamline deployment and reduce complexity through full factory configuration. This platform includes all the essential features of an intelligent monitoring and control application, such as dynamic visualization, alarm and event handling, comprehensive reporting, third-party integration, and health diagnostics.

When paired with Vertiv's Data Center Management System, Vertiv™ PowerNexus achieves seamless integration with minimal testing enabled by our plug-and-play technology, further accelerating deployment and simplifying site installation.

The platform is customizable with three scalable options to suit various operational needs:

	Essential	Advance	Premium
Monitoring	X	X	X
Control		X	X
Redundancy			X
Service Cloud Integration			X

Key Features of Vertiv™ PowerNexus

- UPS power range: 1500, 2000, 2500 kVA
- Switchgear with up to 5000A total load
- Dual-Power inputs for utility power redundancy
- Direct and protected (UPS) outputs
- Integrated EPMS (optional)
- Robust, modular, and highly efficient UPS
- Safe and reliable power distribution technology
- Easy configurable system
- No long-run cables needed
- Predictive maintenance and distributed energy resources ready

Technical Specifications

Vertiv™ PowerNexus			
Rating [kVA]	1500	2000	2500
Inputs	2 (grid and generator)		
Operating temperature	Up to 35°C @ 100% load		
Relative humidity @ 20 °C (non condensing)	Up to 95%		
Frame color (RAL scale)	RAL7021		
IP protection	IP20 for UPS, IP31 for SWB		
Integration	Assembly on site or preassembled on skid or inclosure in factory		
Grounding	TN-C or TN-S		
Certification	CE and UL	CE and UL	UL
Nominal voltage [V]	400/480		
Input breaker @480V [A]	2500	3000	4000
Input breaker @400 [A]	3000	4000	5000
Short circuit rating	100 kAIC		
UPS			
Core rating [kVA]	500		
Inverter Overload Capacity	110% continuous, 125% for 10 mins, 150% for 1 min		
Input factor	≥0.99		
UPS modes	Online (VFI), Dynamic Online (VI), ECO Mode (VFD)		
UPS efficiency @ VFI mode	≥97%		
UPS efficiency @ VFD mode	≥99%		
Frequency range [Hz]	40 - 70		
UPS serviceability	Complete UPS isolation by using external bypass		
Battery voltage range [V]	397 - 700		

Vertiv™ Trinergy™ UPS is the next-gen UPS built on a history of exceeding Tier IV data center power chain availability and over 40 years of technical innovation and proven global deployment successes.

Vertiv™ Trinergy™ Overview and Benefits At a Glance

Elevating performance, modularity, resilience and efficiency for your power needs



Most robust UPS in the market
for unparalleled reliability and resilience



Best-in-class modular UPS for maximum flexibility from room to pre-fabricated deployment



Skid-mount and enclosure power solutions for an easy deployment



Supports High-Density and Artificial Intelligence Applications providing increased power in a single power block compared to existing market products



Ready to integrate alternative energy and back up power sources, including lithium-ion and nickel-zinc



Rich Digital Experience Service empowered by data across entire life-cycle with Vertiv™ Life™ Advanced Incident Management and Condition Based Maintenance



The ultimate optimized high-power solution for global standards and easy installation



Designed, manufactured, tested and available **across the globe**



Hot and easy serviceability for no interruption, even during maintenance or power upgrades

Vertiv.com | Vertiv Headquarters, 505 N Cleveland Ave, Westerville, OH 43082, USA

© 2025 Vertiv Group Corp. All rights reserved. Vertiv™ and the Vertiv logo are trademarks or registered trademarks of Vertiv Group Corp. All other names and logos referred to are trade names, trademarks or registered trademarks of their respective owners. While every precaution has been taken to ensure accuracy and completeness here, Vertiv Group Corp. assumes no responsibility, and disclaims all liability, for damages resulting from use of this information or for any errors or omissions. Specifications, rebates and other promotional offers are subject to change at Vertiv's sole discretion upon notice.