

VERTIV™ DEVICE DIRECTOR

Configuration & Maintenance Utility



FEATURES

- Automatic discovery of Vertiv devices on the network*
- Mass configuration of device and network settings
- Mass firmware updates to user-selectable devices

Device Director is a comprehensive, Windows-based utility that is used to install, configure and maintain multiple Vertiv™ devices on the network.

This suite of commissioning and maintenance tools helps users to identify Vertiv rack Power Distribution Units (rPDUs) and environmental monitors on the network and simultaneously configure device settings, network configurations, and update firmware on selected devices. Configuration files may be exported to backup and later restore device settings.

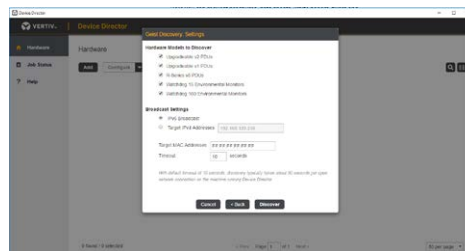
Device Director gives installers a powerful and easy way to mass configure devices while reducing setup and maintenance costs.



Device Director main view

SYSTEM REQUIREMENTS

CPU	2 GHz or faster dual core CPU
RAM	2G or more
Hard Disk Space	1 GB
OS	Windows 7 (64-bit), Windows 8 (64-bit), Windows 10 (64-bit), Windows Server 2008 (64-bit), Windows Server 2012 (64-bit), Windows Server 2012 R2, Windows Server 2016



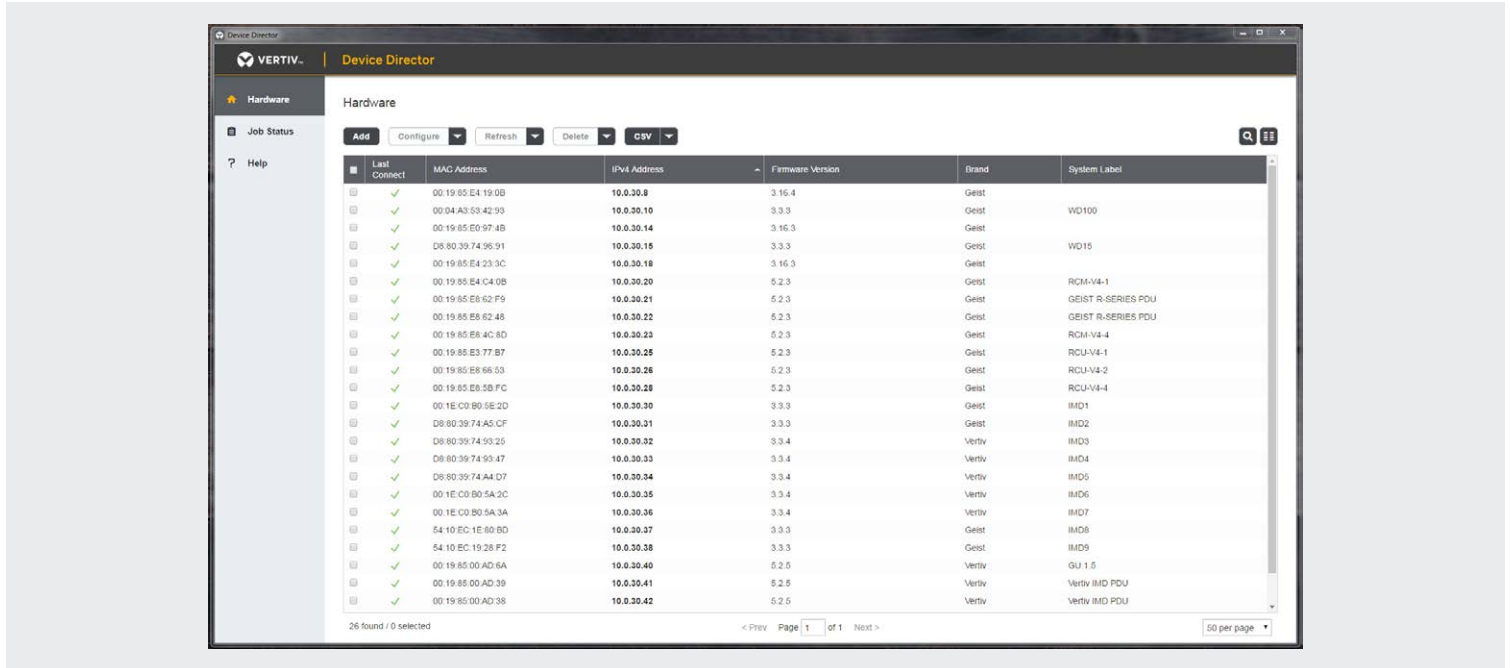
Automatic discovery of Vertiv devices on the network



Mass configure settings on user selectable devices

*refer to compatibility chart on the following page to verify firmware requirements

Device Director



Customize your very own Device Director dashboard.

Compatibility

Device Director is compatible with Vertiv™ and Geist Upgradeable rPDUs and Watchdog environmental monitors.

	DISCOVERY	IMPORT BY IPV4 ADDRESS	FIRMWARE UPDATES	EDIT SETTINGS
Upgradeable v2				
5.3.x and higher	✓	✓	✓	✓
Upgradeable v1				
3.4.x and higher	✓	✓	✓	✓
2.1.x-3.3.x		✓	✓	✓
2.0.x		✓	✓	
R-Series v5				
5.2.x and higher	✓	✓	✓	✓
5.0.x-5.1.x		✓	✓	✓
R-Series v4				
4.3.x-4.4.x		✓	✓	✓
R-Series v3				
3.15.x-3.16.x		✓	✓	✓
Watchdog 15/100				
3.4.0 and higher	✓	✓	✓	✓
3.0.x-3.3.x		✓	✓	✓
Watchdog 1000/1200/1250/1400				
3.15.x-3.16.x		✓	✓	

VertivCo.com | Vertiv Headquarters, 1050 Dearborn Drive, Columbus, OH, 43085, USA

© 2018 Vertiv Co. All rights reserved. Vertiv, and the Vertiv logo trademarks or registered trademarks of Vertiv Co. All other names and logos referred to are trade names, trademarks or registered trademarks of their respective owners. While every precaution has been taken to ensure accuracy and completeness herein, Vertiv Co. assumes no responsibility, and disclaims all liability, for damages resulting from use of this information or for any errors or omissions. Specifications are subject to change without notice.