

Key Features

Vertiv Smart InfraSight takes data from Vertiv™ RDU devices and represents it into a 3D model for one-glance monitoring. With Vertiv RDU auto-discovery and drag-and-drop 3D modelling capabilities, you can configure the software and start monitoring the power train, cooling chain, environmental conditions, and HD video streams in minutes.

Vertiv Smart InfraSight Features

- Alarm notifications via email, SMS and on-screen icons
- Auto discovery of Vertiv RDU devices
- Drag-and-drop 3D modelling
- Power usage, temperature and humidity monitoring
- Up to 9 HD video streams
- Entry control via access cards

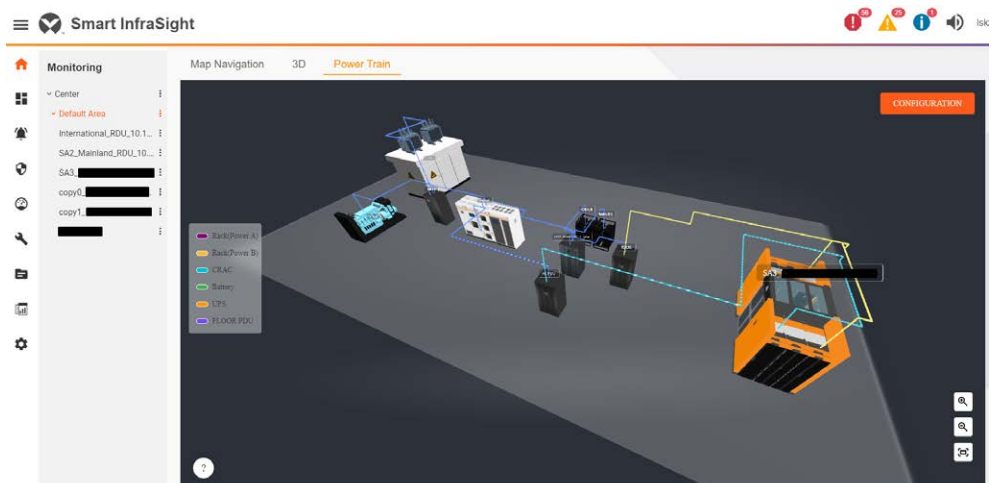
Vertiv™ Smart InfraSight™ provides consolidated data views from different RDU501s across geo-locations through a web-based monitoring interface. A critical monitoring and management component for all Vertiv™ Smart Solutions, Smart InfraSight™ provides users unmatched visibility and insights into the health and efficiency of the system.

Solving problems

Vertiv Smart InfraSight reduces the challenge and cost of monitoring your distributed IT infrastructure across multiple sites. Auto-discovery and easy-to-use 3D modelling gets your data center up and running faster, and maximizes your investment returns. Pack all your power & environment facilities and IT facilities monitoring and management into one solution with Vertiv Smart InfraSight.

Adding value

Vertiv Smart InfraSight protects and increases the value of your data center investment by alerting you anywhere in the world when there is a problem, allowing for corrective actions to be taken sooner. Video surveillance and door access controls further reduces the need for on-site administrators, freeing resources for other revenue-generating parts of your operations.



Benefits of using Smart InfraSight™

Vertiv Smart InfraSight gets you up and running fast without sacrificing essential features.

- **Fast deployment:**

Standard Data center infrastructure management features you need in a easy to install and configure solution.

- **Scalable:**

Simply add and discover Vertiv™ RDU solutions as data center and location expansions take place.

- **Centralized management solution:**

Turnkey solution with embedded maps and 3D navigation. No need for expensive and time consuming R&D to customize the solution to your business needs.

Technical specifications

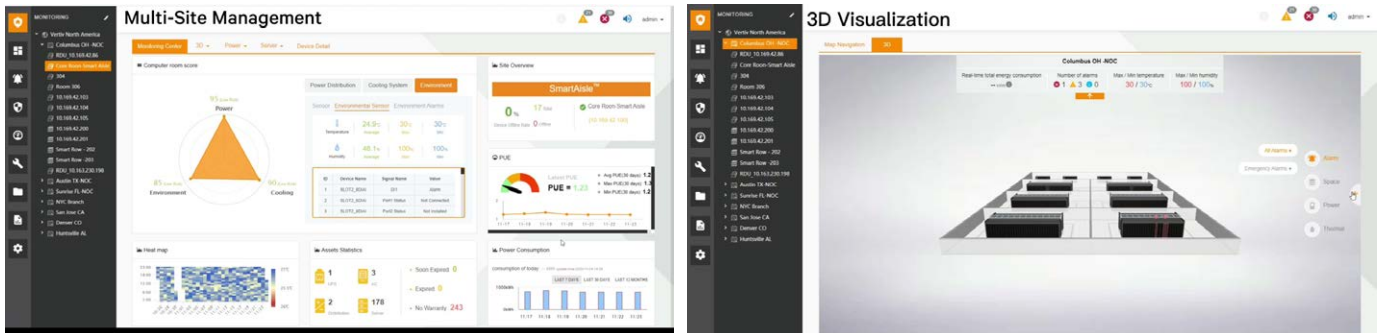
Requirements for client operating environment

Web browser	Google Chrome 73 and above; Firefox 66 and above; Microsoft Edge 40 and above; IE11 and above
Resolution	1920x1080
Hardware configuration	CPU: 4-core and above, Hard disk: 2G and above, Memory: 4G and above, OS: Windows 7 and above, Network card
Network bandwidth	10MB and above

Category Smart InfraSight™ premium

Maximum managed RDU	256
Maximum managed Devices	1500
Installation	19" rack mount, 1U
Processor	1x Quad-core Intel® Xeon®E-2124, 3.3GHz, 8M Cache, 4C/4T
Memory	16GB 2666MT/s DDR4 ECC UDIMM
Power Infeed	Redundant power infeed, 350W x 2, Auto Ranging (100–240VAC 50/60 Hz)
Hard Disk	1x 2TB 7.2K RPM NLSAS 12Gbps 2.5" HD
Network Card	2x 1GbE LOM Network Interface Controller (NIC) ports 42.8x434x544.8
Dimension (mm)	1.69"×17.08"×21.45" (with mounting bracket and bezel)
Weight	13.6Kg

Screenshots



Vertiv.com | Vertiv Headquarters, 505 N Cleveland Ave, Westerville, OH 43082, USA

© 2024 Vertiv Group Corp. All rights reserved. Vertiv™ and the Vertiv logo are trademarks or registered trademarks of Vertiv Group Corp. All other names and logos referred to are trade names, trademarks or registered trademarks of their respective owners. While every precaution has been taken to ensure accuracy and completeness here, Vertiv Group Corp. assumes no responsibility, and disclaims all liability, for damages resulting from use of this information or for any errors or omissions. Specifications, rebates and other promotional offers are subject to change at Vertiv's sole discretion upon notice.

AV-49565 (R08/24)