

Vertiv™ Liebert® PPC | 400-750 kVA PDU

Efficient and reliable power distribution for your mission-critical applications



Benefits

Flexible Configuration

- Application-optimized solutions
- Expansion capability
- Location flexibility
- Custom features available

Easy Deployment

- Simple Installation
- Improved Serviceability
- Space saving/Compact footprint

High-Visibility Monitoring

- Intuitive, accessible and meaningful data
- Waveform capture
- Improved power quality metering

Power Distribution - done right!

Vertiv™ Liebert® PPC has been enhanced to provide reliable uninterrupted power distribution to meet the growing demands of enterprise and colocation/hyperscale high density applications. Available standard ratings are aligned with the most common power building blocks in the industry. The new large PPC is designed on a simplified, standardized and a robust platform, ensuring design flexibility, easy deployment, and high-visibility monitoring.

The PDU is shipped to you with a custom configuration of sub-feeds, created for your specific site power requirements.



Vertiv™ Liebert® PPC 400-750kVA

Ideally suited for:

- Enterprise Data Centers
- Colocation/Hyperscale Providers
- Laboratories
- Manufacturing Technology
- Medical Imaging Suites
- Office Environments
- Process Control Rooms

Compact, Modular Design

- Maximize floorspace with compact footprint (60"Wx48"Dx85"H). Removable conduit plates on top (extra 3") and 48" depth allows unit through doorways and on freight elevators.
- Easy mobility and installation.
- True front access design for easy serviceability and easy access to monitoring platform.
- Top and bottom cable entry/exit accommodates both overhead and underfloor electrical conduit runs. Available for both raised and non-raised floor applications.

Flexible Power Distribution

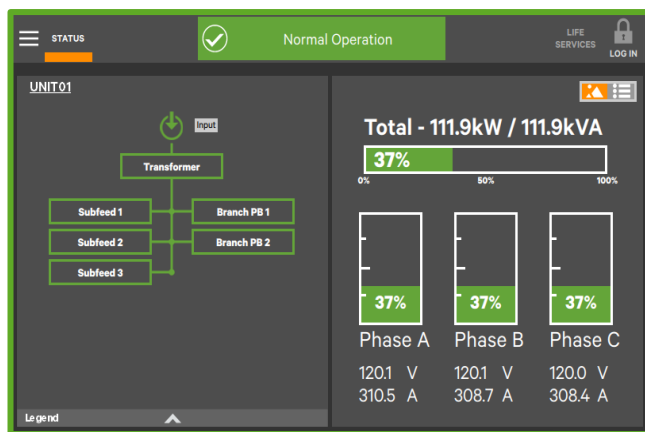
- Available in 400, 500, 600 and 750kVA to support high density applications.
- Offers multiple input/output voltage custom configurations 208/120V; 400/231V; 415/240V.
- Distribution options up to (8) 600AT and up to (4) 1000AT sub-feed breakers.
- Copper(Cu) and Aluminum(Al) transformer options.
- DOE2016 compliant transformers maximizing energy efficiency.

Adding Value

Monitoring power usage in your critical environment is essential to ensuring the safety and continuity of your IT infrastructure. Vertiv™ Liebert® DPM provides easy access to accurate, real-time data on power status and load levels is crucial, whether the IT footprint is deployed in an on-site data center or a remote facility. The DPM is mounted on the front door of the Vertiv™ Liebert® PPC.

The Liebert® DPM features intelligent power monitoring, with a 9-inch color touchscreen display that provides one-line system and individual breaker status and equipment load levels. A navigation menu makes it easy to program the system and manage equipment loads, and to import or export site specific configurations to or from other PDU units. The monitoring system offers voltage, current, power, and energy metering accurate to 0.5% or less.

Furthermore, the monitoring system integrates with your BMS to provide management of local and remote power distribution, with automatic notification of potential overloads and local or remote emergency power-off.



In the above figure, at left is a "single-line," an electrical diagram of the PDU unit, showing the input, the transformer, and the output distribution of branch panelboards and subfeed breakers. At right is the PDU's total output load, with individual power levels for each phase in a 3-phase distribution, including voltage and amperage for each phase.

Vertiv™ Liebert® PPC 400-750kVA

PDU Specifications

Electrical

| | |
|------------------|---|
| kVA Rating | 400, 500, 600 and 750kVA |
| Input | 3-phase, 3-wire plus ground |
| Input Voltage | @60Hz, 480V (Standard) / 600V (Optional) |
| Output | 3-phase, 4-wire plus ground |
| Output Voltage | @60Hz: 415/240V, 400/231V, 208/120V |
| Agency listed to | UL62638; FCC part 15B for EMI and ANSI/IEEE C62.41 (when surge devices installed) |

Operating Conditions

| | |
|-----------------------|---------------------------|
| Operating Temperature | 0 to 40°C |
| Storage Temperature | -20 to 55°C |
| Audible Noise | Meets NEMA ST-20 standard |
| Relative Humidity | 0 to 90% non-condensing |
| Altitude | Up to 6,600ft |

Transformer

| | |
|--|---------------------------------------|
| Meets DOE2016 standard | Yes |
| Transformer Ratings available in | K4 (Standard), K13 and K20 (Optional) |
| Transformer Material Type | Copper (Cu) and Aluminum (Al) |
| Neutral conductor rating | 200% |
| Temp Rise options | 150°C (Standard), 115°C (Optional) |
| Vertiv transformers have been designed and built by Vertiv in our world-class manufacturing facility for over 40 years | |

Monitoring

| | |
|---|--|
| Monitoring Configurations | Monitoring at the System level (Input and Output) Monitoring down to the branch circuit level (BCMS) |
| Display | 9.0" Color touchscreen |
| Measured Values | Voltage, Current, Power Factor, Energy, Harmonics |
| Protocols | Modbus TCP, SNMP, BACnet IP or MSTP, Modbus/RTU, SMS, Email, HTTP/HTTPS and Vertiv Protocol |
| Environmental sensor enabled through same protocols | |

Physical

| | |
|---------------------------|---|
| Dimensions | 60"W x 48"D x 85"H |
| Unit Weight, lb. (kg) | 400kVA- 5207(2362); 500kVA- 5842 (2650); 600kVA- 5998 (2721) ; 750kVA-7119 (3229) |
| Shipping Weight, lb. (kg) | 400kVA- 5349(2427); 500kVA- 5984(2715); 600kVA- 6140(2786) ; 750kVA-7261(3294) |