

AVOCENT® MATRIX HIGH PERFORMANCE KVM SWITCHING SYSTEM



Quick Installation Guide

1. Assembling the rack mount rails

Each rack mount rail consists of two brackets. For the right rail, slide the two A brackets together. For the left rail, slide the two B brackets together. When installing the rail assemblies into the rack cabinet, make sure the rail flanges point away from the center of the rack.

NOTE: The brackets are not interchangeable. Be sure to use the A rack rail assembly on the right side of the rack cabinet and the B assembly on the left side of the rack cabinet..

2. Installing the rack mount rails to the rack

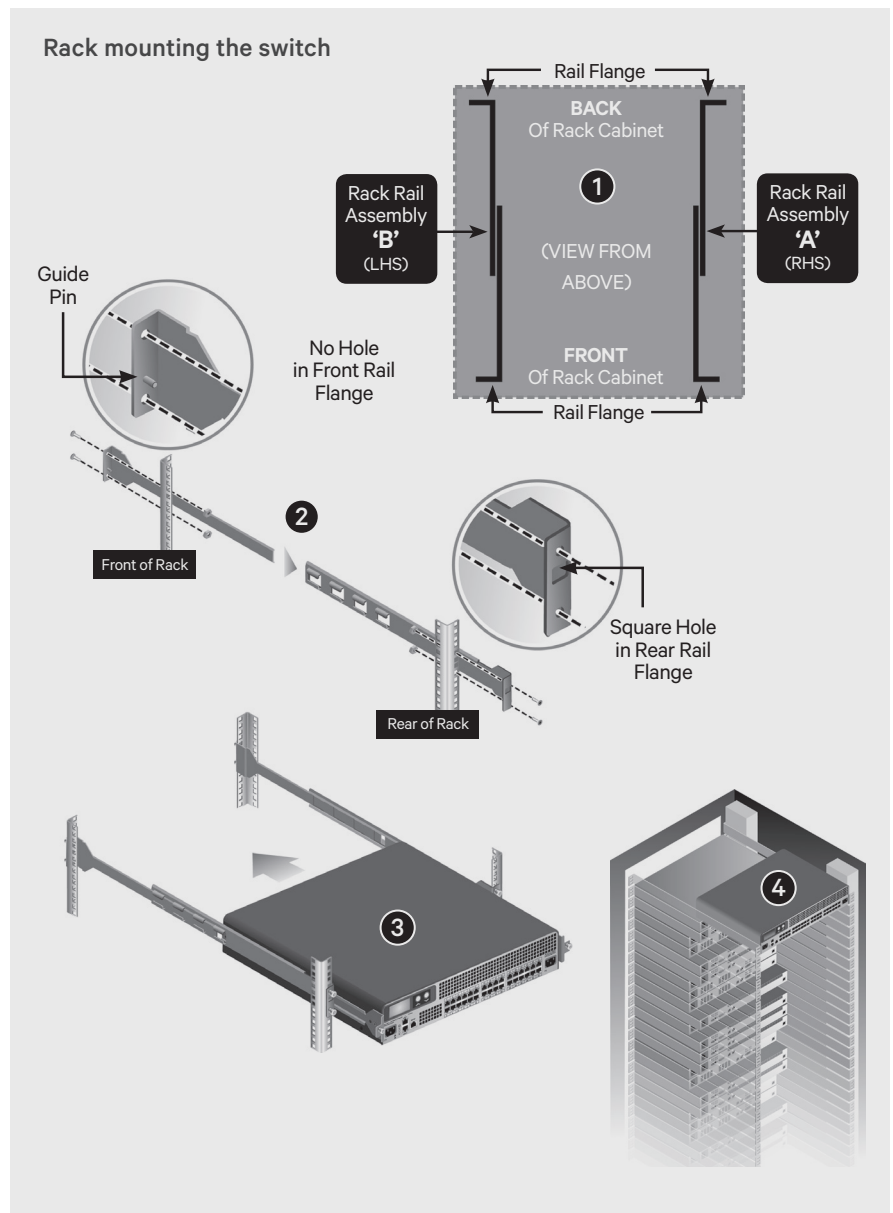
Using the guide pins on the rails, attach the two rack mount rail assemblies to the front and back of the rack and tighten the pan-head screws.

3. Installing the switch in the rack

From the rear of the rack, slide the switch into the rails. Ensure the switch brackets are securely inserted into the rails and tighten the screws to secure the switch.

4. Verifying switch placement in the rack

Be sure that the back of the Matrix switch is mounted in the rear of the rack.



5. Connecting power

Ensure that all power to the Matrix switching system is turned off. Depending on your model, attach the supplied power cord or cords to each Matrix switch and receiver. Attach the other end of each cord to an AC power source.

6. Connecting to the LAN

Attach an STP or UTP cable to the LAN1 port on the Matrix switch and attach the other end to your network. For redundancy, connect both LAN1 and LAN2 network ports.

7. Connecting the receiver to the Matrix switch

Attach an STP cable to the RJ-45 port on the receiver. Attach the other end of the STP cable to a numbered RJ-45 port on the Matrix switch. Repeat for each receiver in the matrix system.

NOTE: Shielded cables must be used with this equipment to maintain compliance with radio frequency energy emission regulations and ensure a suitably high level of immunity to electromagnetic disturbances.

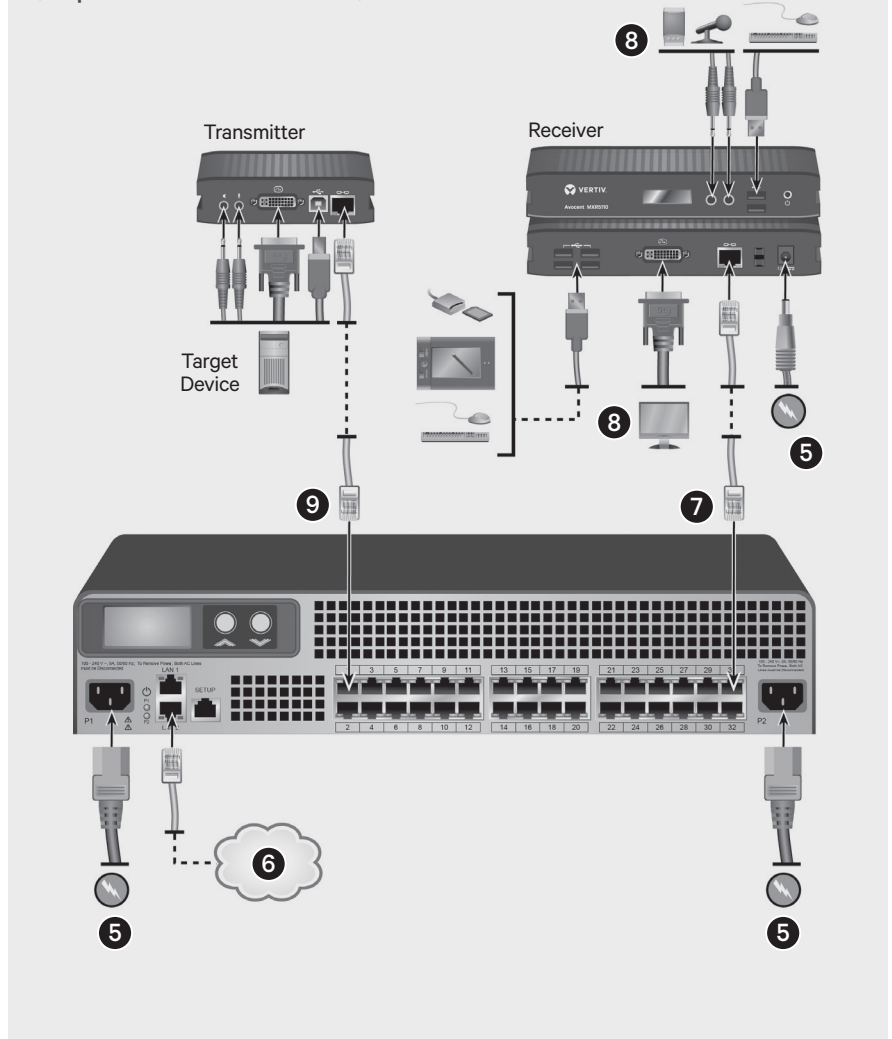
8. Connecting the keyboard, monitor, mouse and audio peripheral devices (optional)

Attach the monitor cable to the appropriately labeled port on the receiver. Attach a keyboard and mouse to the USB ports on the receiver. Attach the stereo speakers and microphone cables to the appropriately labeled ports on the receiver, if desired.

9. Connecting a computer to the Matrix switch

Using the provided cables, insert the connectors into the

Matrix Switch Configuration Example (32-port Matrix switch shown)



corresponding ports on the computer. Attach the other end of the cables to the connectors on the corresponding ports of the transmitter. Attach an STP cable to the RJ-45 port on the transmitter. Attach the other end of the STP cable to an RJ-45 port on the Matrix switch. Repeat for each computer in the Matrix system.

NOTE: Transmitter modules provide audio connectors, which may be left unattached

from the computer if this functionality is not required. While the transmitter is powered by the Matrix switch, the receiver requires its own external power source.

To contact Vertiv Technical Support: visit www.VertivCo.com

© 2017 Vertiv Co. All rights reserved. Vertiv, the Vertiv logo are trademarks or registered trademarks of Vertiv Co. All other names and logos referred to are trade names, trademarks or registered trademarks of their respective owners. While every precaution has been taken to ensure accuracy and completeness herein, Vertiv Co. assumes no responsibility, and disclaims all liability, for damages resulting from use of this information or for any errors or omissions. Specifications are subject to change without notice.

