

Vertiv™ Thermal Insight

Thermal Management Software



Features & Benefits

- **Receive System Alerts** - Receive timely alarm notifications via email, SMS (region dependent), and on-screen icons if a problem occurs.
- **Automatic System Shutdown** - Protect your physical and virtual servers, applications, and data with automatic shutdown in the event of thermal equipment failure, avoiding equipment damage or data loss due to prolonged operation of servers in extreme environments such as high temperatures.
- **Simple Thermal Setup and Configuration** - Automatically discover devices connected to your network.
- **Simple, Remote Thermal Configuration and Control** - Remote access to each cooling unit web interface.
- **Monitor System Status and Alarms** - Dashboard views of key data points such as Return Air Temperature, Supply Air Temperature, High Water, and Compressor pressure abnormalities. View summary data, alarms, and status of individual devices. Alarm data can be sorted and filtered to create various alarm views.
- **Support Redundant Device Configurations** - Improve system and application availability with the support of redundant devices.
- **VMware vCenter Plugin** - Seamless integration with the VMware vCenter Management Platform for single-pane-of-glass monitoring and control of host and virtual machines (VMs), including VM shutdown and migration (vMotion).



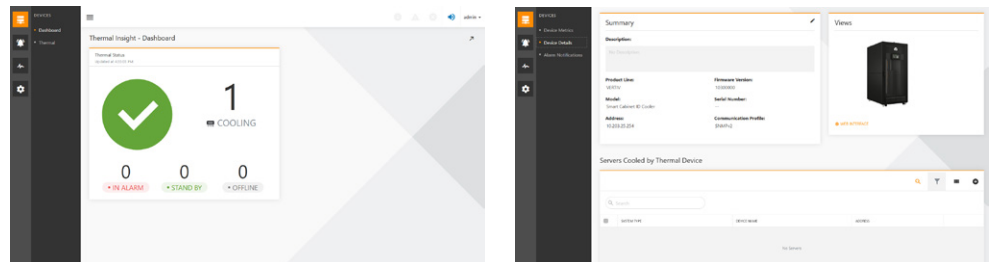
Vertiv™ Thermal Insight is a remote management platform for data center cooling infrastructure. It's designed for users with distributed IT systems who need a centralized way to manage their IT cooling infrastructure.

Vertiv™ Thermal Insight is simple to install, easy to use, and provides a single management console for up to 100 devices. It helps improve availability and simplifies the monitoring and management of mission-critical IT equipment. Thermal Insight provides an enhanced user experience, so you get the most out of your data center cooling infrastructure. This complimentary software sends alerts if there are issues with the connected devices and provides a quick way to safely shutdown IT devices based on user-configured parameters.

Seamless Integration

Monitoring your thermal management infrastructure is crucial to keeping your distributed IT infrastructure running smoothly. Managing equipment locally or at remote sites can be challenging and costly. It takes time and resources to configure, monitor, and maintain mission-critical devices. Thermal Insight enables thermal management from a centralized location which improves resource efficiency and is more cost effective. Alerts and notifications via email, SMS (region dependent), or on-screen icons let you know when there is a problem.

Additionally, if VMware™ is your virtualization platform of choice, you can benefit from the seamless integration offered by the Thermal Insight vCenter Plugin. The vCenter Plugin provides single-pane-of-glass monitoring and management of thermal infrastructure directly within the vCenter Management Platform. It can also be configured to trigger automatic Virtual Machine (VM) shutdown or migration (using vMotion) based on alarms or events communicated by Thermal Insight.



Supported Thermal Units

Model	Interface
Vertiv™ Liebert® CRV	SIC Card
Vertiv™ SmartCabinet™ ID	Integrated SNMP Port; SIC Card

Vertiv™ Thermal Insight Specifications

Vertiv™ Thermal Insight can be installed on a 64-bit machine with minimum system requirements of 8GB memory, 4-core CPU, and 256GB HDD. The recommended system requirements are 8GB memory, 8-core CPU, and 2TB HDD.

Supported operating systems include Microsoft® Windows® 7 and 10 64bit; Microsoft® Windows Server® 2012 R2, 2016 and 2019 64bit; Red Hat® Enterprise Linux® 7.1 (with GUI installed). The recommended browser for both desktop and mobile devices is Google Chrome™ 55 or later. Other browsers supported include Microsoft® Edge 38 or higher, Internet Explorer® 11, Firefox® 51 or later, and Safari® Mobile 9. Default ports that need to be open for communication are 8443, 27017.

*Automation Agent (used for server shutdown) supports Microsoft® Windows® 7, 8.1 and 10 (32bit and 64bit), Microsoft® Windows Server® 2008 R2 (64bit), Microsoft® Windows Server® 2012 R2 (64bit), Microsoft® Windows Server® 2019 (64bit), and 2019 Red Hat® Enterprise Linux® 6.7, 6.9 7.1-7.4 (all-64bit), VMWare ESXi 5.5, 6.0 and 6.5 (64bit), VMware 6.7 (and above) required for vCenter Plugin, Microsoft Hyper-V Server 2016 (64bit), Microsoft Hyper-V Server 2012 R2 (64bit).