

# KMMLED156 LCD Console Tray Keyboard Replacement



## Quick Installation Guide

**NOTE:** These instructions are for the replacement of KMMLED156 LCD Console Tray model keyboards only. Verify the model number of your LCD tray before attempting to replace the keyboard using these instructions.

The KMMLED156 LCD Console Tray keyboard is located by opening the console display. Access to release the keyboard is under the slide tray assembly.

### 1. Removing the old USB keyboard from the KMMLED156 console

Fully extend the KMMLED156 tray forward and open the console display.

Locate the opening under the tray, push up to release the keyboard, and lift it from the console tray.

Disconnect the keyboard from the attached USB cable.

If replacing only the keyboard, proceed to Step 2.

-or-

If replacing the console, tray, and rails, refer to the Vertiv™ KMMLED156 Rack Mount 15.6" Console Tray for Dell EMC Installer/User Guide.

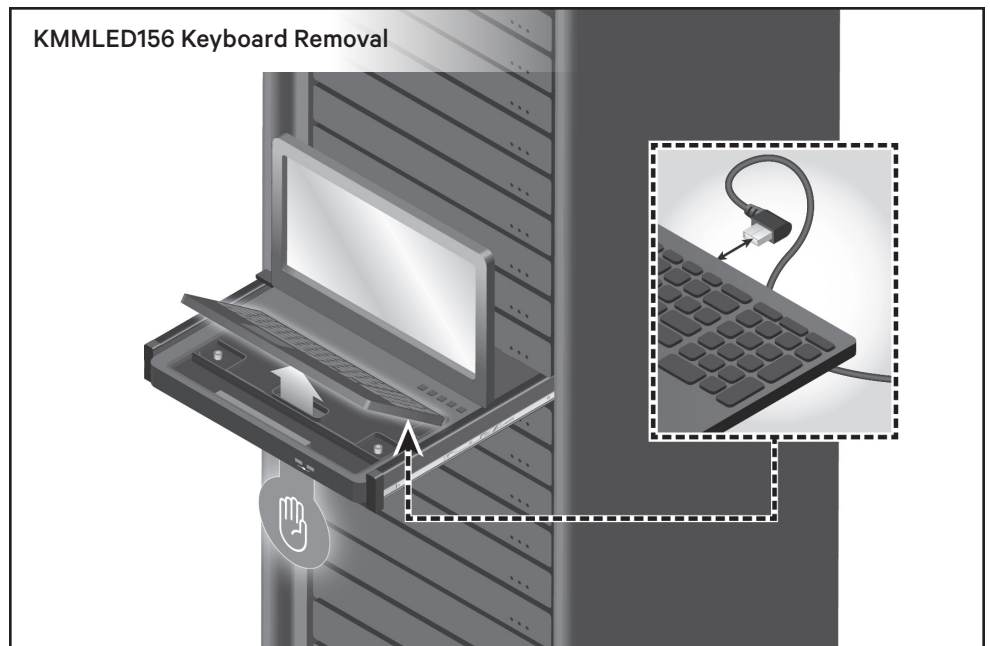
### 2. Installing the replacement USB keyboard for the KMMLED156 console

Connect the USB cable from the console to the keyboard.

Angle the rear of the keyboard into the console tray. Ensuring the USB cable is not trapped under the keyboard, push the keyboard into position.

### Additional information

A translated version of this information is available in the Vertiv™ KMMLED156 Rack Mount 15.6" Console Tray for Dell EMC Installer/User Guide located at <https://www.vertiv.com/en-us/support/avocent-support-dell/>.



Une version traduite de ces informations est disponible dans le guide d'installation et d'utilisation du plateau de console 15,6" à montage en rack pour Dell EMC KMMLED156 Vertiv™ situé à l'adresse <https://www.vertiv.com/en-us/support/avocent-support-dell/>.

Ein übersetztes Installations-/Benutzerhandbuch für den Vertiv™ KMMLED156 18,5-Zoll-LCD-Konsolen-Tray für Dell EMC zur Befestigung im Rack finden Sie unter <https://www.vertiv.com/en-us/support/avocent-support-dell/>.

Hay una versión traducida de esta información en el Instalador/la Guía del usuario de la Bandeja de consola Rackmount de 15,6 pulg. Vertiv™ KMMLED156 para Dell EMC, disponible en <https://www.vertiv.com/es-latam/soporte/avocent-support-dell/>.

有关本信息的翻译版本，请参阅《适用于 Dell EMC 的 Vertiv™ KMMLED156 机架式 15.6" 控制台托盘安装人员/用户指南》，详见 <https://www.vertiv.com/en-us/support/avocent-support-dell/>。

有關本資訊的翻譯版本，請參閱《適用於 Dell EMC 的 Vertiv™ KMMLED156 機架式 15.6 主控台托盤安裝/使用指南》，詳

見 <https://www.vertiv.com/en-us/support/avocent-support-dell/>。

この情報の翻訳バージョンは、「Vertiv™ KMMLED156 ラックマウント 15.6 インチ コンソールトレイ(Dell EMC用)インストーラー/ユーザーガイド」を参照してください (<https://www.vertiv.com/en-us/support/avocent-support-dell/>)。

이 정보에 대한 번역본은 <https://www.vertiv.com/en-us/support/avocent-support-dell/>에 있는 Vertiv™ KMMLED156 Rack Mount 15.6" Dell EMC용 콘솔 트레이 설치자/사용자 설명서에 있습니다.

Перевод данной информации доступен в руководстве по установке консоли для монтажа в стойку Vertiv™ KMMLED156 Rack Mount 15.6" для устройств Dell EMC по ссылке: <https://www.vertiv.com/en-us/support/avocent-support-dell/>.

Versi terjemahan informasi ini tersedia dalam Panduan Pengguna/Installer Baki Konsol Rack Mount 15,6" KMMLED156 Vertiv™ untuk Dell EMC yang ada di <https://www.vertiv.com/en-us/support/avocent-support-dell/>.



**To contact Vertiv Technical Support: visit [www.Vertiv.com](http://www.Vertiv.com)**

© 2021 Vertiv Group Corp. All rights reserved. Vertiv™ and the Vertiv logo are trademarks or registered trademarks of Vertiv Group Corp. All other names and logos referred to are trade names, trademarks or registered trademarks of their respective owners. While every precaution has been taken to ensure accuracy and completeness here, Vertiv Group Corp. assumes no responsibility, and disclaims all liability, for damages resulting from use of this information or for any errors or omissions. Specifications, rebates and other promotional offers are subject to change at Vertiv's sole discretion upon notice.

